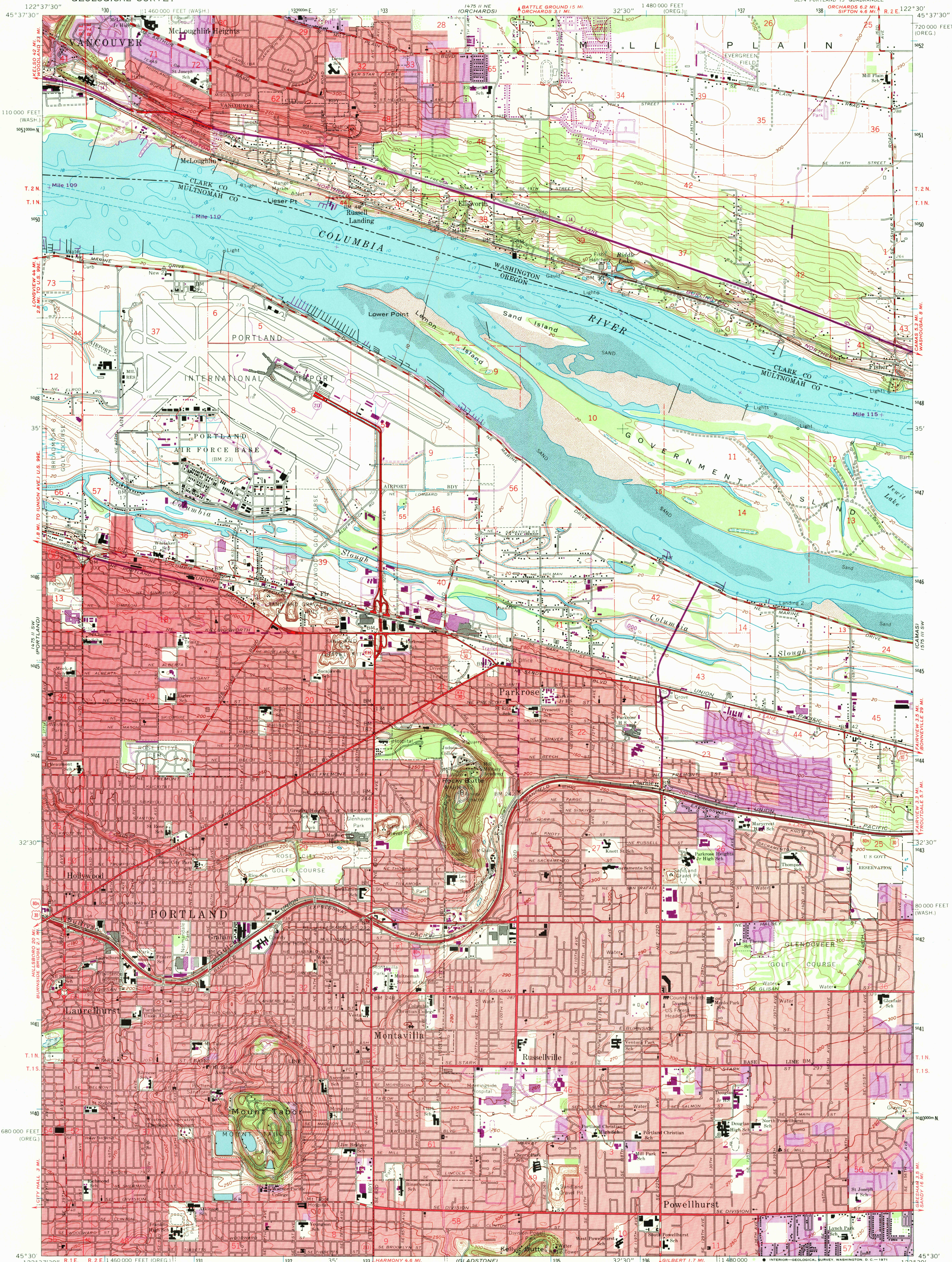


UNITED STATES
DEPARTMENT OF THE INTERIOR
GEOLOGICAL SURVEY

MOUNT TABOR QUADRANGLE
OREGON-WASHINGTON
7.5 MINUTE SERIES (TOPOGRAPHIC)
SE/4 PORTLAND 15' QUADRANGLE



Mapped, edited, and published by the Geological Survey

Control by USGS, USC&GS, and State of Oregon

Topography from aerial photographs by photogrammetric methods

and by planetable surveys. Culture and drainage in part by USC&GS

Aerial photographs taken 1951 and 1952. Field checked 1954

Revised from aerial photographs taken 1960. Field checked 1961

Polyconic projection. 1927 North American datum

10,000-foot grids based on Oregon coordinate system, north zone

and Washington coordinate system, south zone

1000-meter Universal Transverse Mercator grid ticks

zone 10, shown in blue

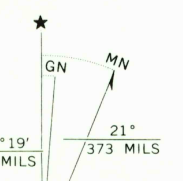
Selected hydrographic data compiled from USC&GS Chart 6156 (1959)

This information is not intended for navigational purposes

Red tint indicates areas in which only landmark buildings are shown

Dashed land lines indicate approximate locations

Fine red dashed lines indicate selected fence lines



UTM GRID AND 1970 MAGNETIC NORTH
DECLINATION AT CENTER OF SHEET

CONTOUR INTERVAL 10 FEET
DATUM IS MEAN SEA LEVEL

DEPTH CURVES AND SOUNDINGS IN FEET - COLUMBIA RIVER DATUM

SHORELINE SHOWN REPRESENTS THE APPROXIMATE LINE OF MEAN HIGH WATER

THE MEAN RANGE OF TIDE IS APPROXIMATELY 2 FEET

THIS MAP COMPLIES WITH NATIONAL MAP ACCURACY STANDARDS

FOR SALE BY U.S. GEOLOGICAL SURVEY, DENVER, COLORADO 80225, OR WASHINGTON, D.C. 20242

A FOLDER DESCRIBING TOPOGRAPHIC MAPS AND SYMBOLS IS AVAILABLE ON REQUEST

Revisions shown in purple compiled from aerial photographs

taken 1970. This information not field checked

1961

PHOTOREVISED 1970

AMS 1475 II SE-SERIES Y892

MOUNT TABOR, OREG.-WASH.

SE/4 PORTLAND 15' QUADRANGLE

N4530-W12230/7.5

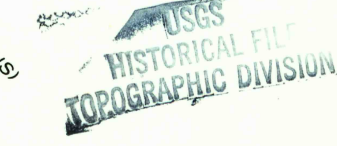


ROAD CLASSIFICATION

Heavy-duty ——— Light-duty ———

Medium-duty ——— Unimproved dirt ———

○ Interstate Route ○ U.S. Route ○ State Route



2810

DEC 1 1971