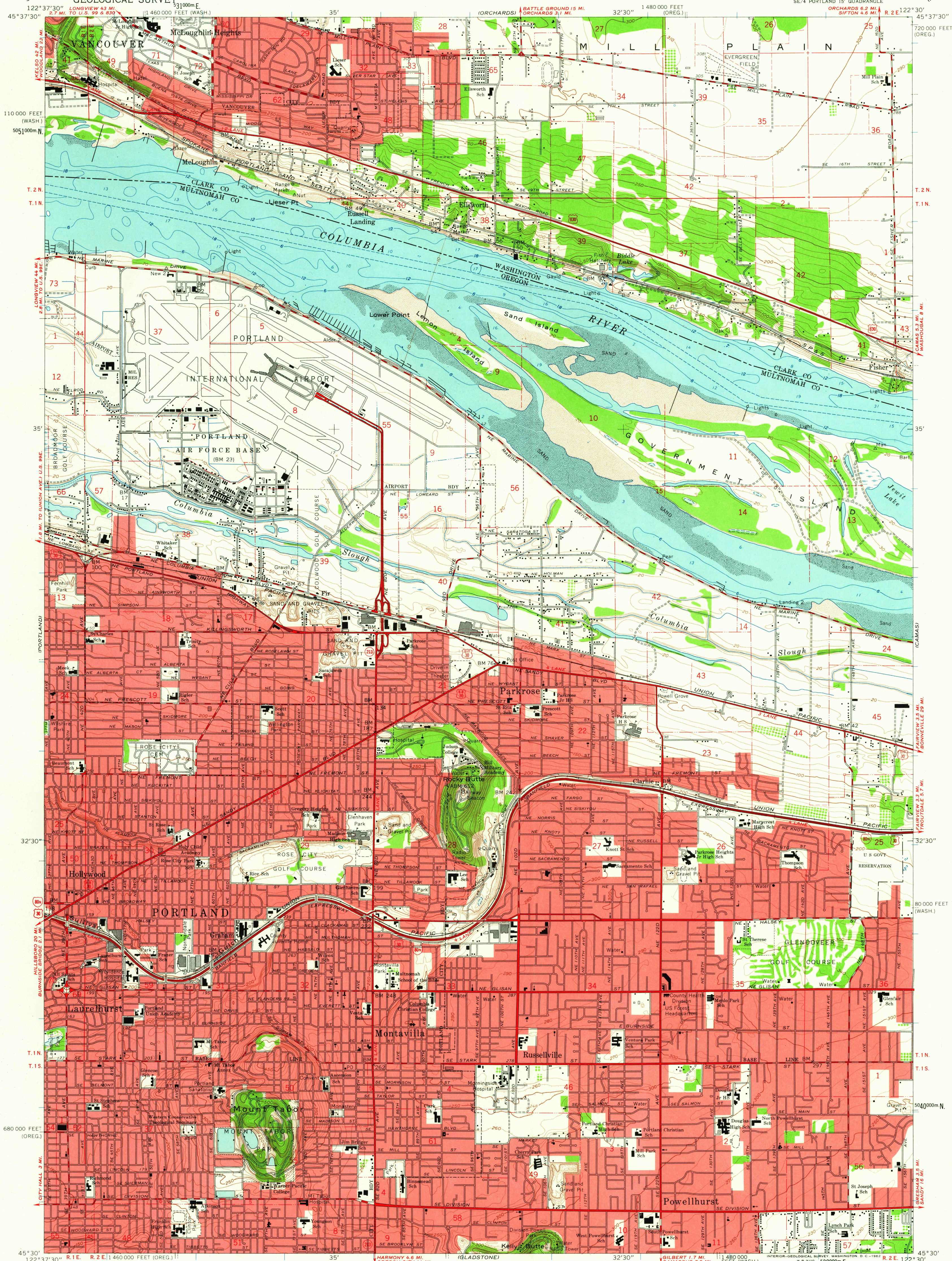


UNITED STATES  
DEPARTMENT OF THE INTERIOR  
GEOLOGICAL SURVEY

MOUNT TABOR QUADRANGLE  
OREGON-WASHINGTON  
7.5 MINUTE SERIES (TOPOGRAPHIC)



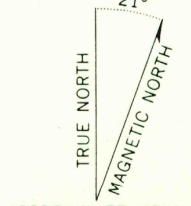
Mapped, edited, and published by the Geological Survey  
Control by USGS, USC&GS, and State of Oregon

Topography from aerial photographs by photogrammetric methods  
and by planimetric surveys. Culture and drainage in part by USC&GS  
Aerial photographs taken 1951 and 1952. Field checked 1954  
Revised from aerial photographs taken 1960. Field checked 1961

Polyconic projection. 1927 North American datum  
10,000-foot grids based on Oregon coordinate system, north zone  
and Washington coordinate system, south zone  
1000-meter Universal Transverse Mercator grid ticks,  
zone 10, shown in blue

Selected hydrographic data compiled from USC&GS Chart 6156 (1959)  
This information is not intended for navigational purposes

Red tint indicates areas in which only landmark buildings are shown  
Dashed land lines indicate approximate locations  
Fine red dashed lines indicate selected fence lines

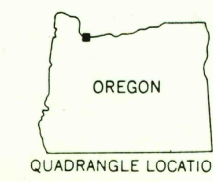


APPROXIMATE MEAN  
DECLINATION, 1961

SCALE 1:24,000  
CONTOUR INTERVAL 10 FEET  
DATUM IS MEAN SEA LEVEL  
DEPTH CURVES AND SOUNDINGS IN FEET—COLUMBIA RIVER DATUM  
SHORELINE SHOWN REPRESENTS THE APPROXIMATE LINE OF MEAN HIGH WATER  
THE MEAN RANGE OF TIDE IS APPROXIMATELY 2 FEET

THIS MAP COMPLIES WITH NATIONAL MAP ACCURACY STANDARDS  
FOR SALE BY U.S. GEOLOGICAL SURVEY, DENVER 25, COLORADO OR WASHINGTON 25, D. C.  
A FOLDER DESCRIBING TOPOGRAPHIC MAPS AND SYMBOLS IS AVAILABLE ON REQUEST

USGS  
Historical File  
Topographic Division



ROAD CLASSIFICATION  
Heavy-duty ——— Light-duty ———  
Medium-duty ——— Unimproved dirt ———  
Interstate Route — U.S. Route — State Route —

MOUNT TABOR, OREG.—WASH.  
SE/4 PORTLAND 15' QUADRANGLE  
N4530—W12230/7.5

1961

FILE COPY  
TOPOGRAPHIC DIVISION

JUL 27 1962

3895