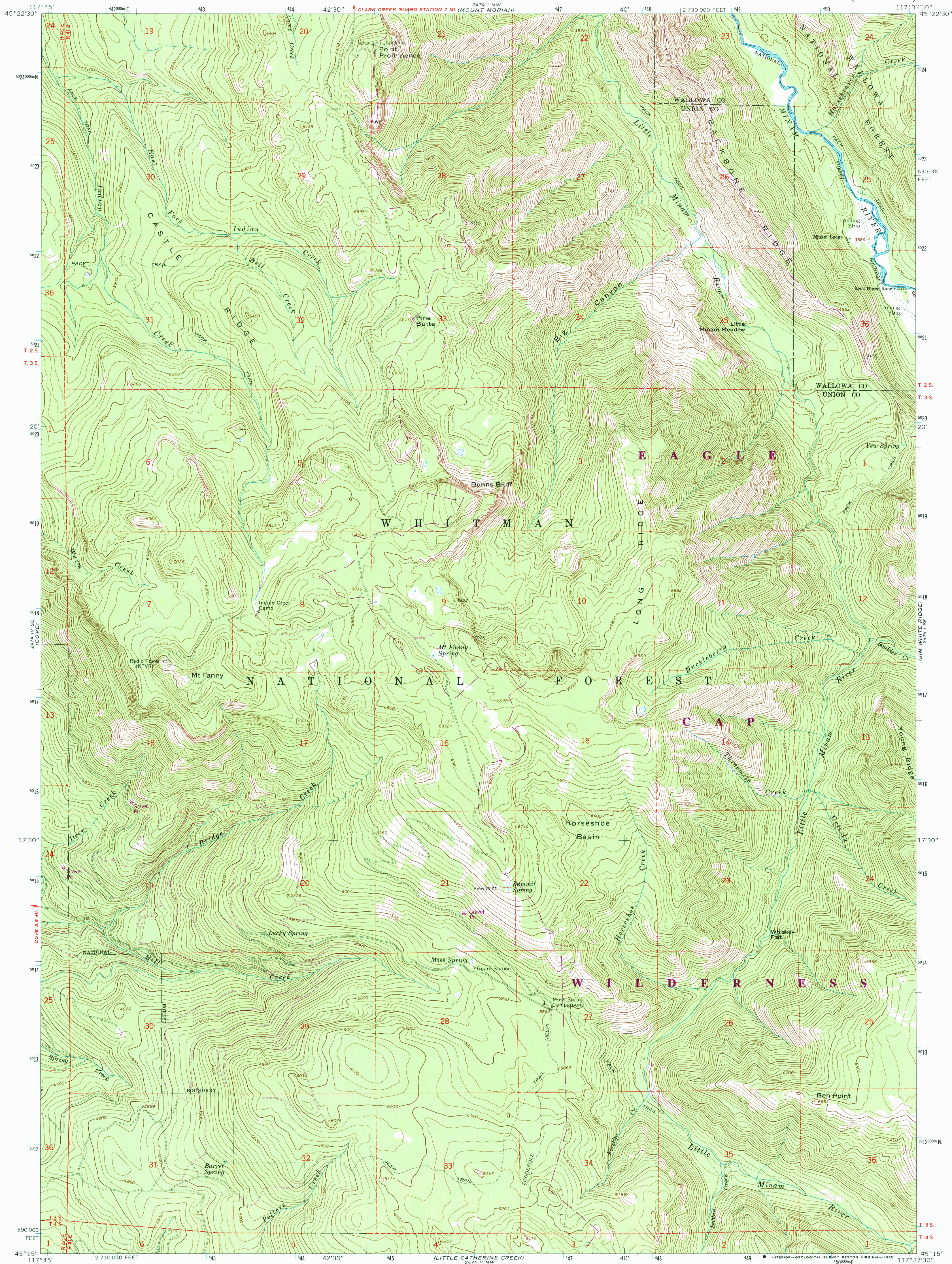


UNITED STATES
DEPARTMENT OF THE INTERIOR
GEOLOGICAL SURVEY

MT. FANNY QUADRANGLE
OREGON
7.5 MINUTE SERIES (TOPOGRAPHIC)



Mapped, edited, and published by the Geological Survey

Control by USGS and NOS/NOAA

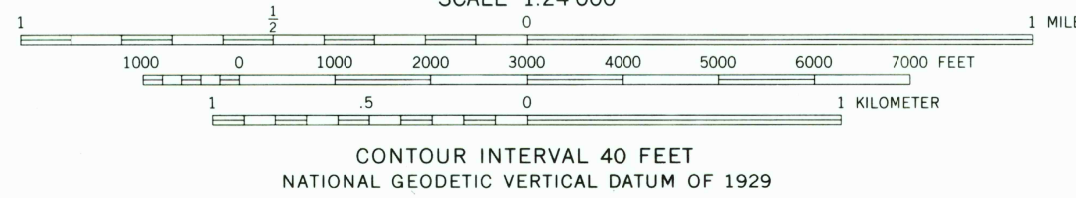
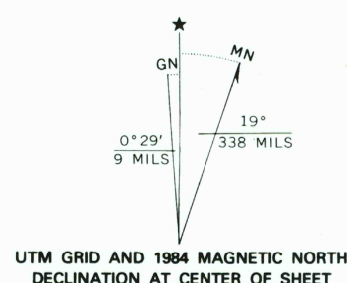
Topography by photogrammetric methods from aerial photographs taken 1963. Field checked 1965

Polyconic projection. 1927 North American datum 10,000-foot grid based on Oregon coordinate system, north zone

1000-meter Universal Transverse Mercator grid ticks, zone 11, shown in blue

To place on the predicted North American Datum 1983 move the projection lines 17 meters north and 80 meters east as shown by dashed corner ticks

There may be private inholdings within the boundaries of the National or State reservations shown on this map



ROAD CLASSIFICATION
Light-duty ————— Unimproved dirt —————

MT. FANNY, OREG.
45117-C6-TF-024

1965
PHOTOREVISED 1984
DMA 2474 1 SW—SERIES V892

THIS MAP COMPLIES WITH NATIONAL MAP ACCURACY STANDARDS
FOR SALE BY U. S. GEOLOGICAL SURVEY, DENVER, COLORADO 80225, OR RESTON, VIRGINIA 22092
A FOLDER DESCRIBING TOPOGRAPHIC MAPS AND SYMBOLS IS AVAILABLE ON REQUEST

Revision shown in purple and woodland compiled from aerial photographs taken 1981 and other sources
Partial field check by U.S. Forest Service. Map edited 1984

RETURN TO:
NHD HISTORICAL MAP ARCHIVES
USGS NATIONAL CENTER, MS-522
RESTON, VA 22092