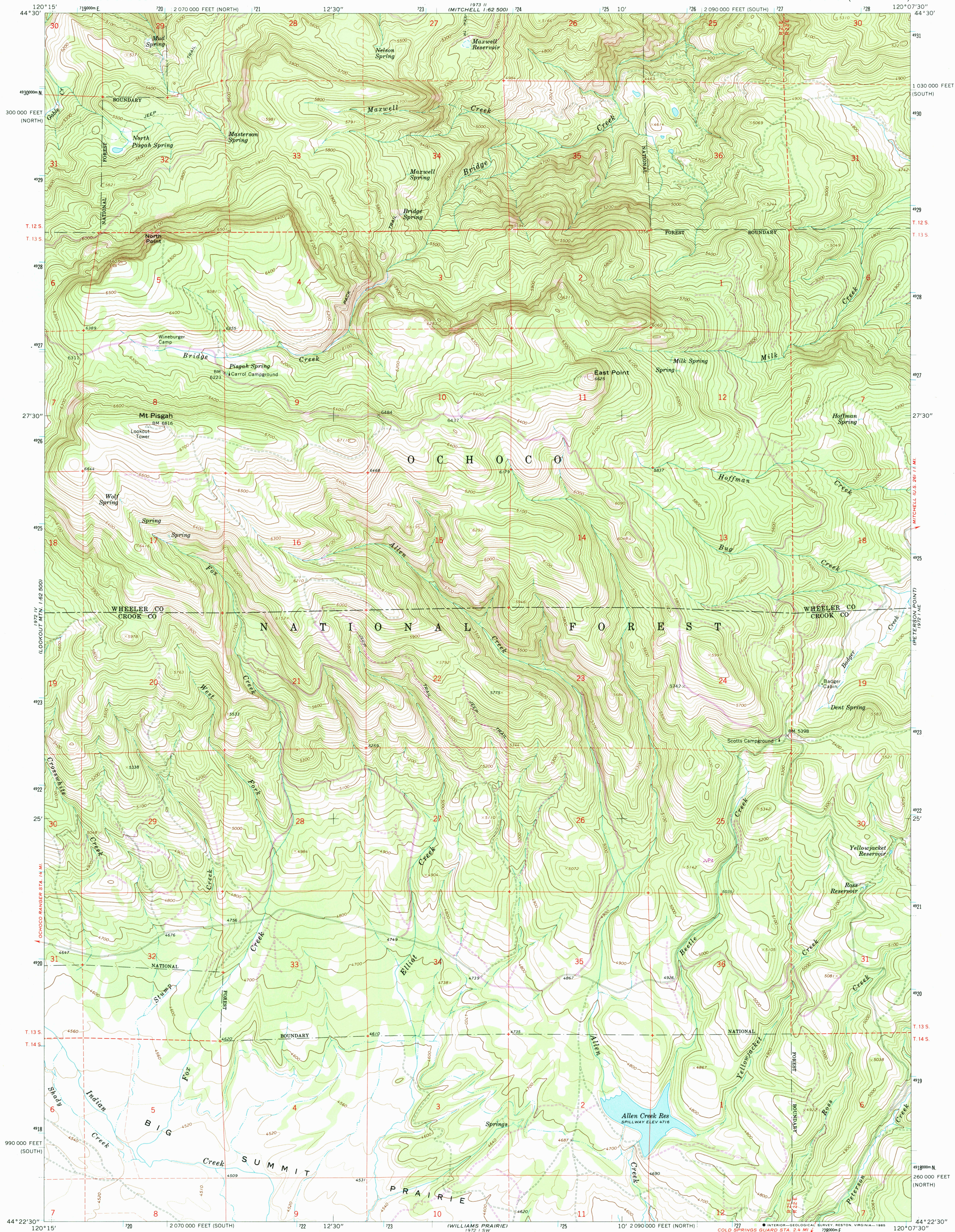


UNITED STATES
DEPARTMENT OF THE INTERIOR
GEOLOGICAL SURVEY

MT. PISGAH QUADRANGLE
OREGON
7.5 MINUTE SERIES (TOPOGRAPHIC)



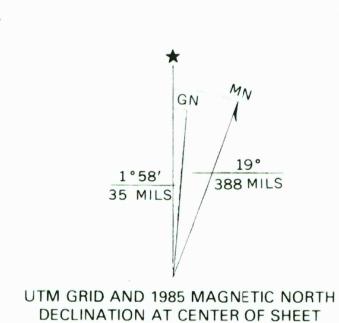
Mapped, edited, and published by the Geological Survey

Control by USGS and NOS/NOAA

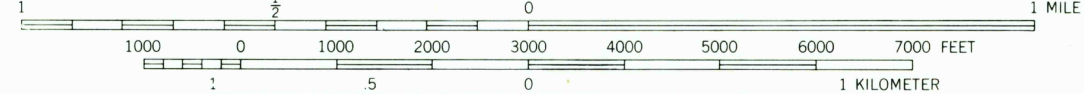
Topography by photogrammetric methods from aerial photographs taken 1959. Field checked 1966

Polyconic projection. 1927 North American datum 10,000-foot grids based on Oregon coordinate system, south and north zones 1000-meter Universal Transverse Mercator grid ticks, zone 10, shown in blue

To place on the predicted North American Datum 1983 move the projection lines 20 meters north and 88 meters east as shown by dashed corner ticks Fine red dashed lines indicate selected fence lines There may be private inholdings within the boundaries of the National or State reservations shown on this map.



SCALE 1:24,000



CONTOUR INTERVAL 20 FEET
DOTTED LINES REPRESENT 10-FOOT CONTOURS
NATIONAL GEODETIC VERTICAL DATUM OF 1929

THIS MAP COMPLIES WITH NATIONAL MAP ACCURACY STANDARDS.
FOR SALE BY U. S. GEOLOGICAL SURVEY, DENVER, COLORADO 80225, OR RESTON, VIRGINIA 22092
A FOLDER DESCRIBING TOPOGRAPHIC MAPS AND SYMBOLS IS AVAILABLE ON REQUEST



QUADRANGLE LOCATION

ROAD CLASSIFICATION
Light-duty ————— Unimproved dirt - - - - -

MT. PISGAH, OREG.
44120-D2-TF-024
PHOTOREVISED 1985
1966

DMA 1972 1 NW-SERIES V892