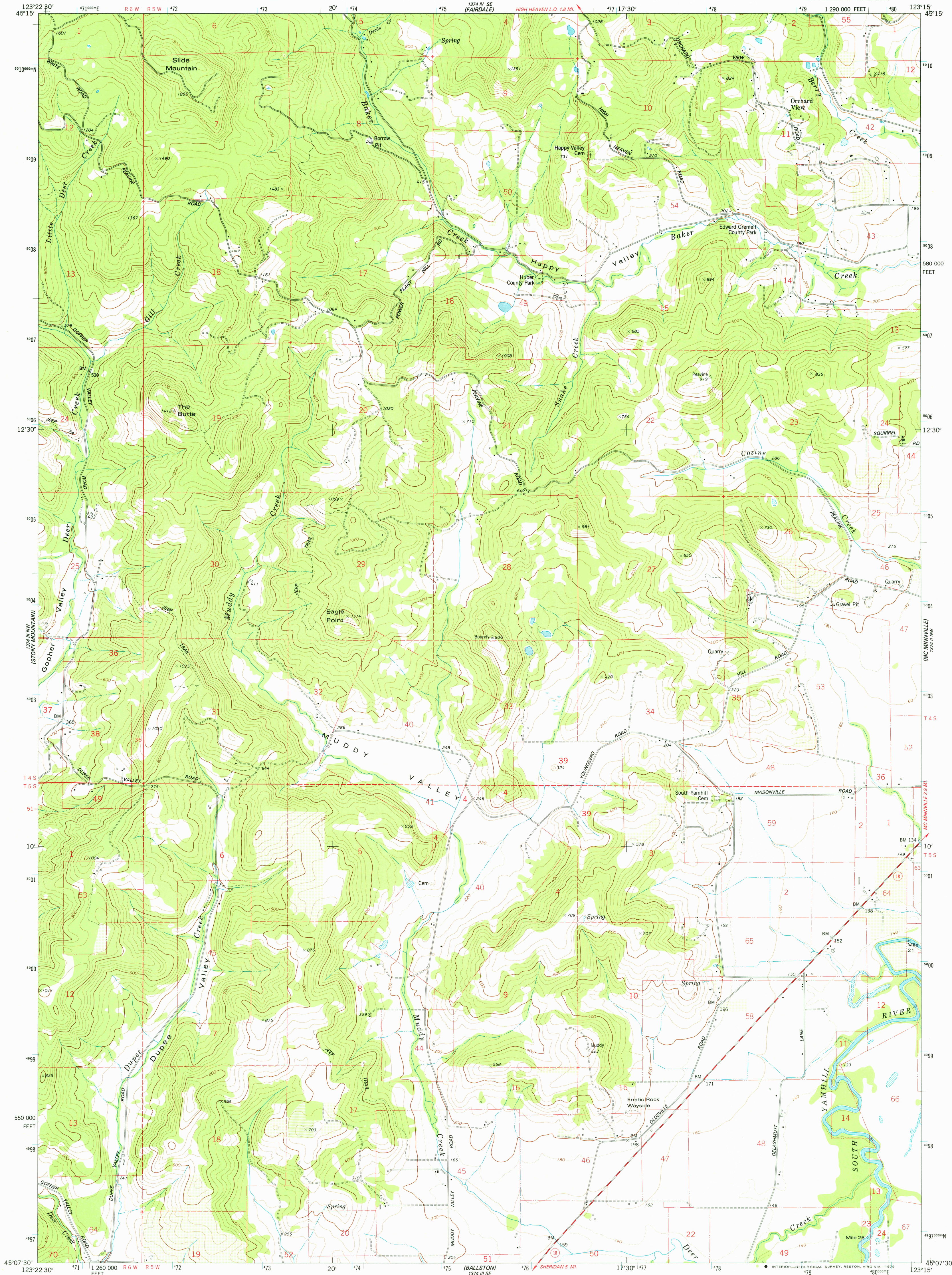
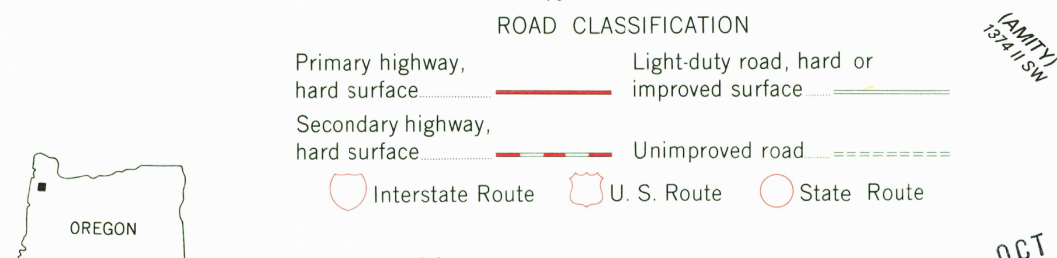
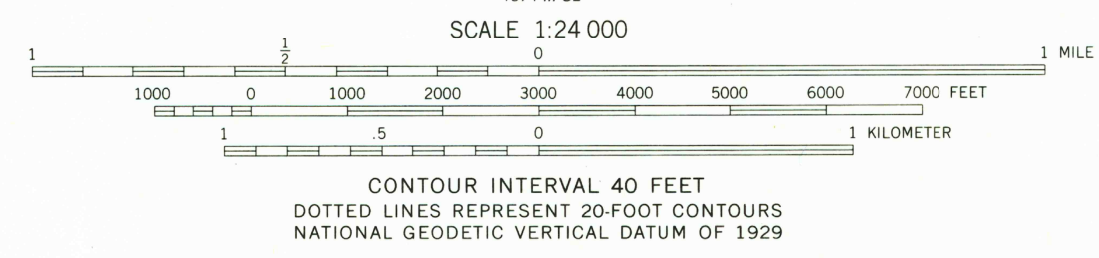
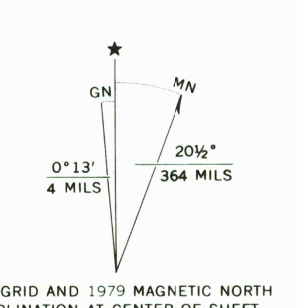




1974 13M  
(CAN-TOW)



Mapped, edited, and published by the Geological Survey  
Control by USGS and NOS/NOAA, and State of Oregon  
Topography by photogrammetric methods from aerial  
photographs taken 1973. Field checked 1974. Map edited 1979  
Projection and 10,000-foot grid ticks: Oregon coordinate  
system, north zone (Lambert conformal conic)  
1000-meter Universal Transverse Mercator grid ticks,  
zone 10, shown in blue. 1927 North American datum  
To place on the predicted North American Datum 1983  
move the projection lines 23 meters north and  
96 meters east as shown by dashed corner ticks  
Fine red dashed lines indicate selected fence and field lines  
where generally visible on aerial photographs.  
This information is unchecked



ROAD CLASSIFICATION  
Primary highway, hard surface  
Secondary highway, hard surface  
Unimproved road  
Interstate Route  
U.S. Route  
State Route  
Light-duty road, hard or improved surface  
Unimproved road

USGS  
Historical File  
Topographic Division  
MUDY VALLEY, OREG.  
NE 1/4 SHERIDAN 15' QUADRANGLE  
N4507.5-W12315/7.5  
1979

FOR SALE BY U. S. GEOLOGICAL SURVEY, DENVER, COLORADO 80225, OR RESTON, VIRGINIA 22092  
A FOLDER DESCRIBING TOPOGRAPHIC MAPS AND SYMBOLS IS AVAILABLE ON REQUEST

OCT 15 1979  
1750