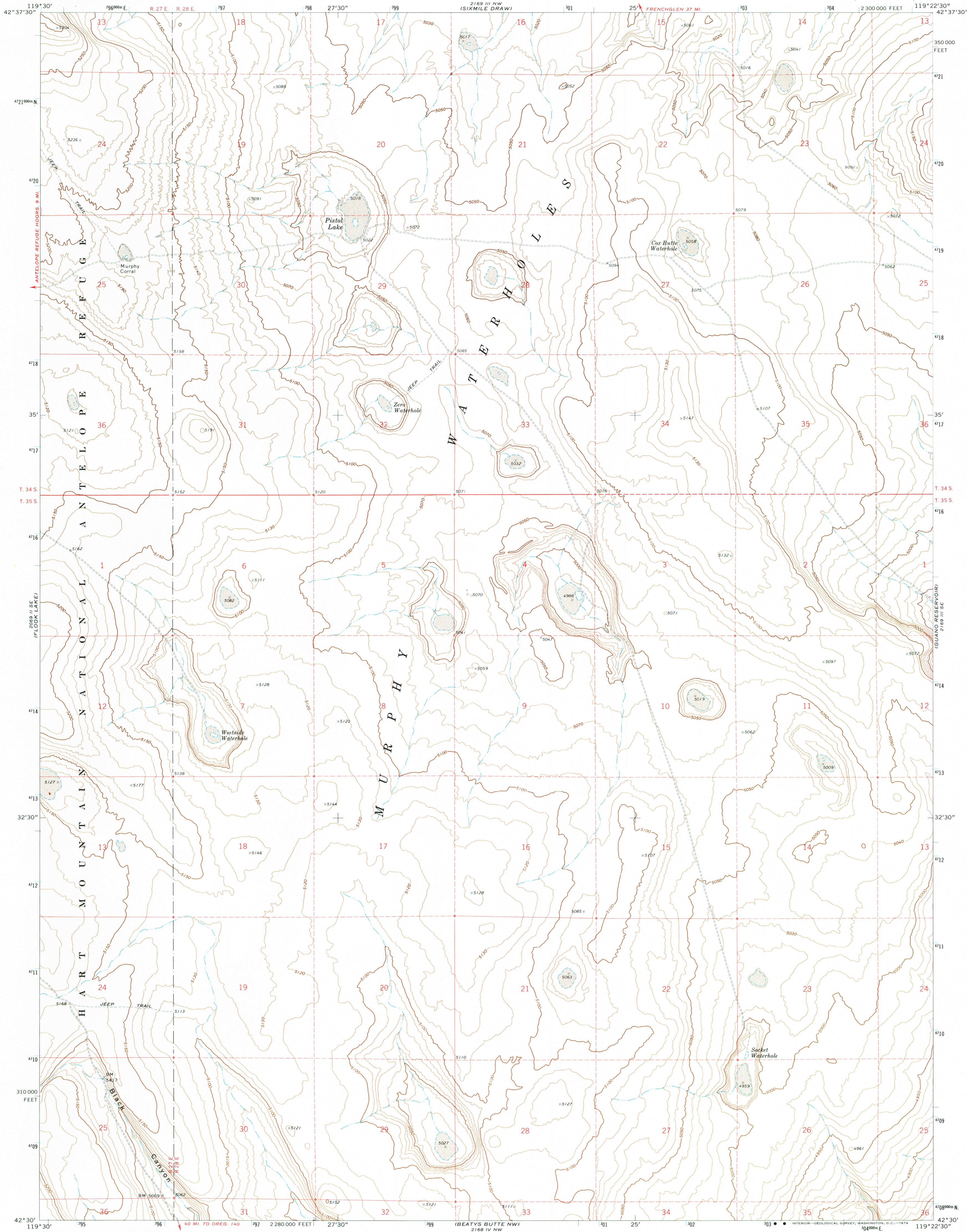
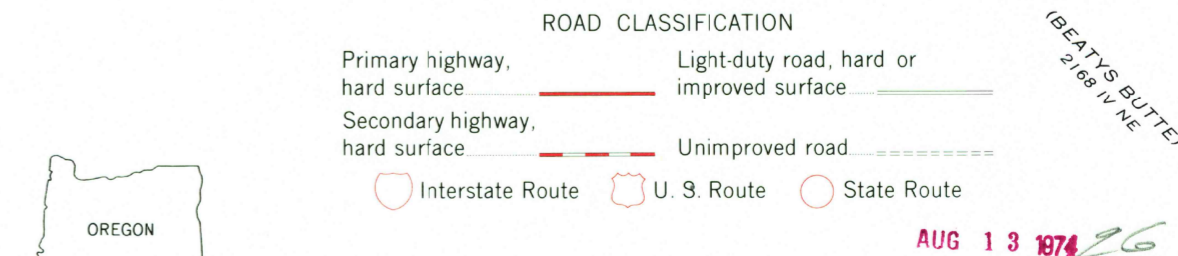
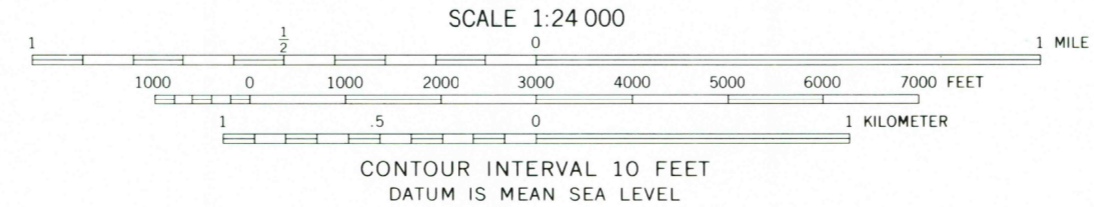
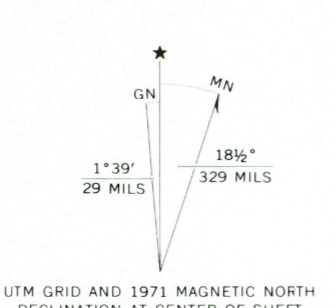


UNITED STATES
DEPARTMENT OF THE INTERIOR
GEOLOGICAL SURVEY

MURPHY WATERHOLES QUADRANGLE
OREGON—LAKE CO.
7.5 MINUTE SERIES (TOPOGRAPHIC)



Mapped, edited, and published by the Geological Survey
Control by USGS and USC&GS
Topography by photogrammetric methods from aerial photographs taken 1969. Field checked 1971
Projection and 10,000-foot grid ticks: Oregon coordinate system, south zone (Lambert conformal conic)
1000-meter Universal Transverse Mercator grid ticks, zone 11, shown in blue. 1927 North American datum



THIS MAP COMPLIES WITH NATIONAL MAP ACCURACY STANDARDS
FOR SALE BY U. S. GEOLOGICAL SURVEY, DENVER, COLORADO 80225, OR WASHINGTON, D. C. 20242
A FOLDER DESCRIBING TOPOGRAPHIC MAPS AND SYMBOLS IS AVAILABLE ON REQUEST

USGS
Historical File
Topographic Division

MURPHY WATERHOLES, OREG.
N4230-W11922.5/7.5

1971

AMS 2169 III SW—SERIES V892

AUG 13 1974 26 50