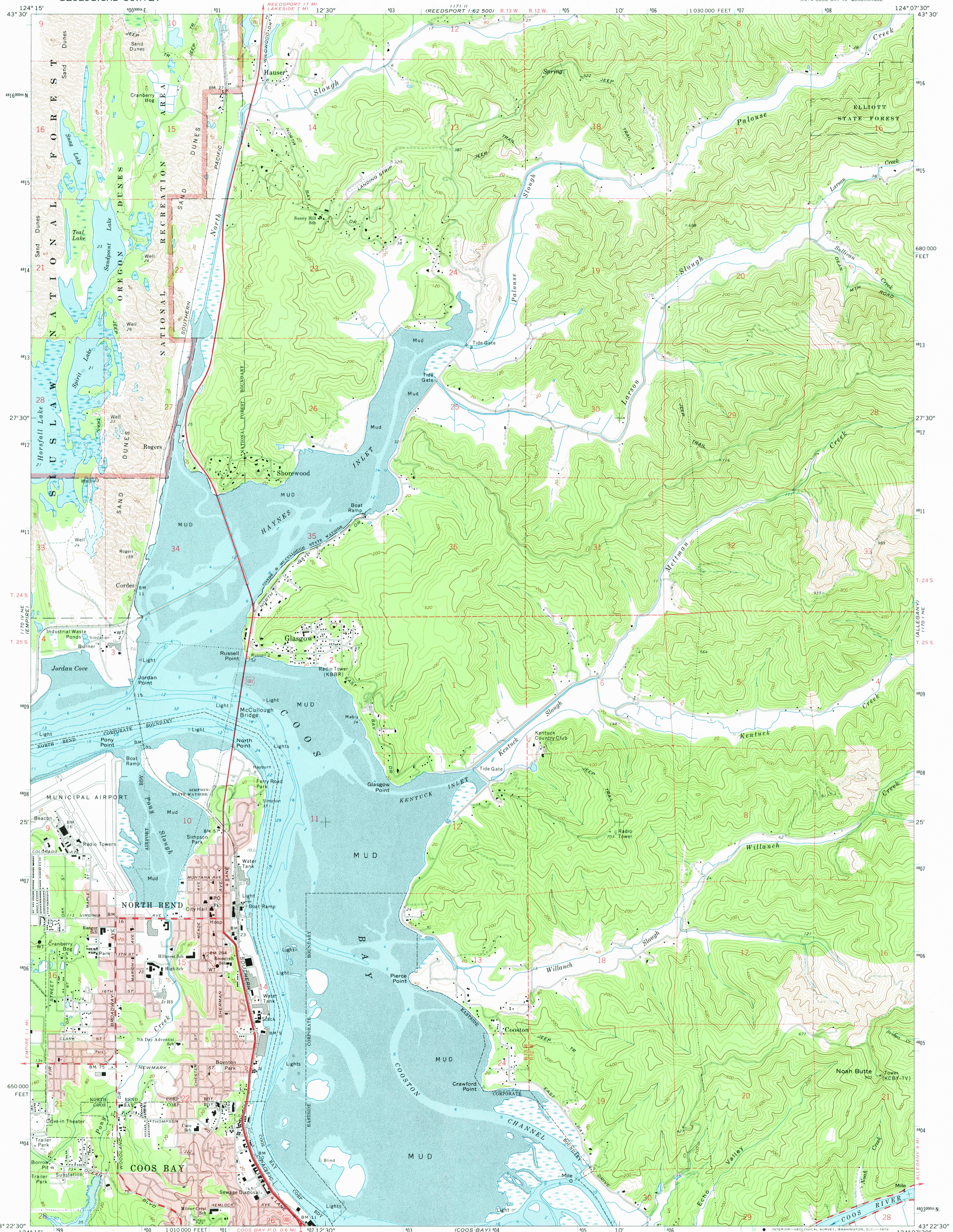
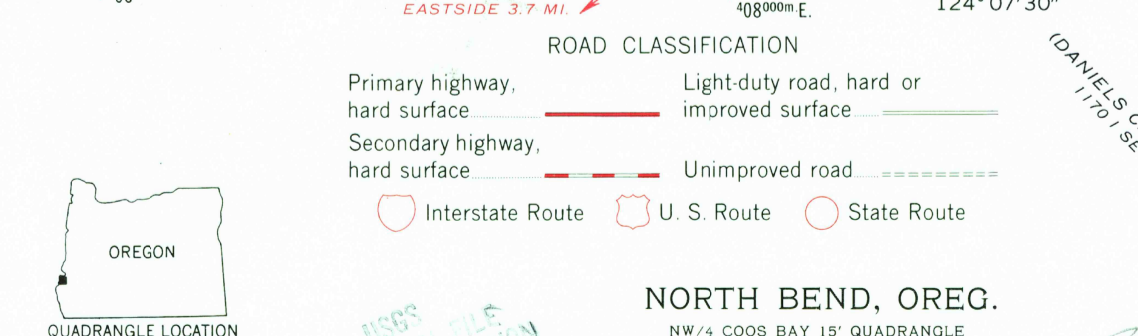
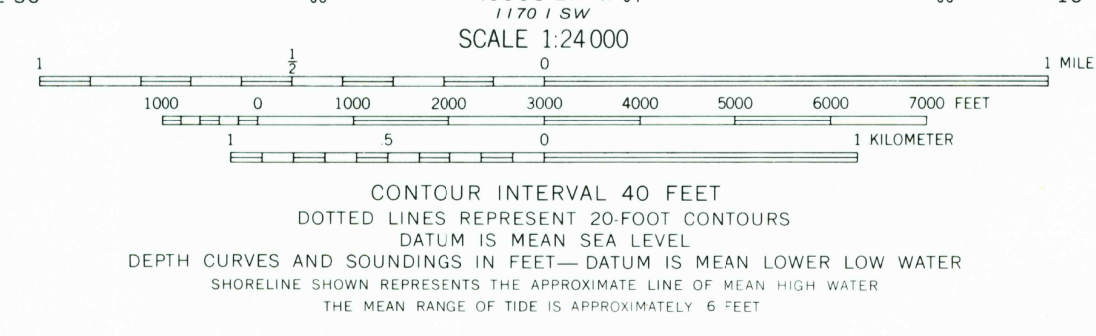
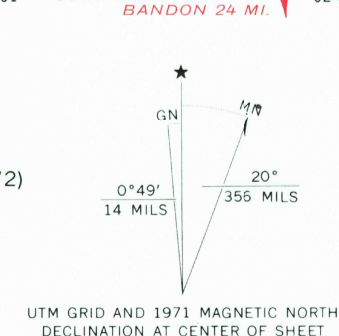


REEDSPORT 1:62 500



Maped, edited, and published by the Geological Survey
Control by USGS and USC&GS
Topography by photogrammetric methods from aerial
photographs taken 1969-70. Field checked 1971
Selected hydrographic data compiled from USC&GS Chart 5984 (1972)
This information is not intended for navigational purposes
Projection and 10,000-foot grid ticks: Oregon coordinate
system, south zone (Lambert conformal conic)
1000-meter Universal Transverse Mercator grid ticks,
zone 10, shown in blue. 1927 North American datum
Red tint indicates areas in which only landmark buildings are shown
Areas covered by dashed light-blue pattern
are subject to controlled inundation



NORTH BEND, OREG.
NW/4 COOS BAY 15' QUADRANGLE
N4322.5—W12407.5/7.5

1971
AMS 1170 I NW—SERIES V892

FOR SALE BY U. S. GEOLOGICAL SURVEY, DENVER, COLORADO 80225, OR WASHINGTON, D. C. 20242
A FOLDER DESCRIBING TOPOGRAPHIC MAPS AND SYMBOLS IS AVAILABLE ON REQUEST

FEB 28 1974

3875