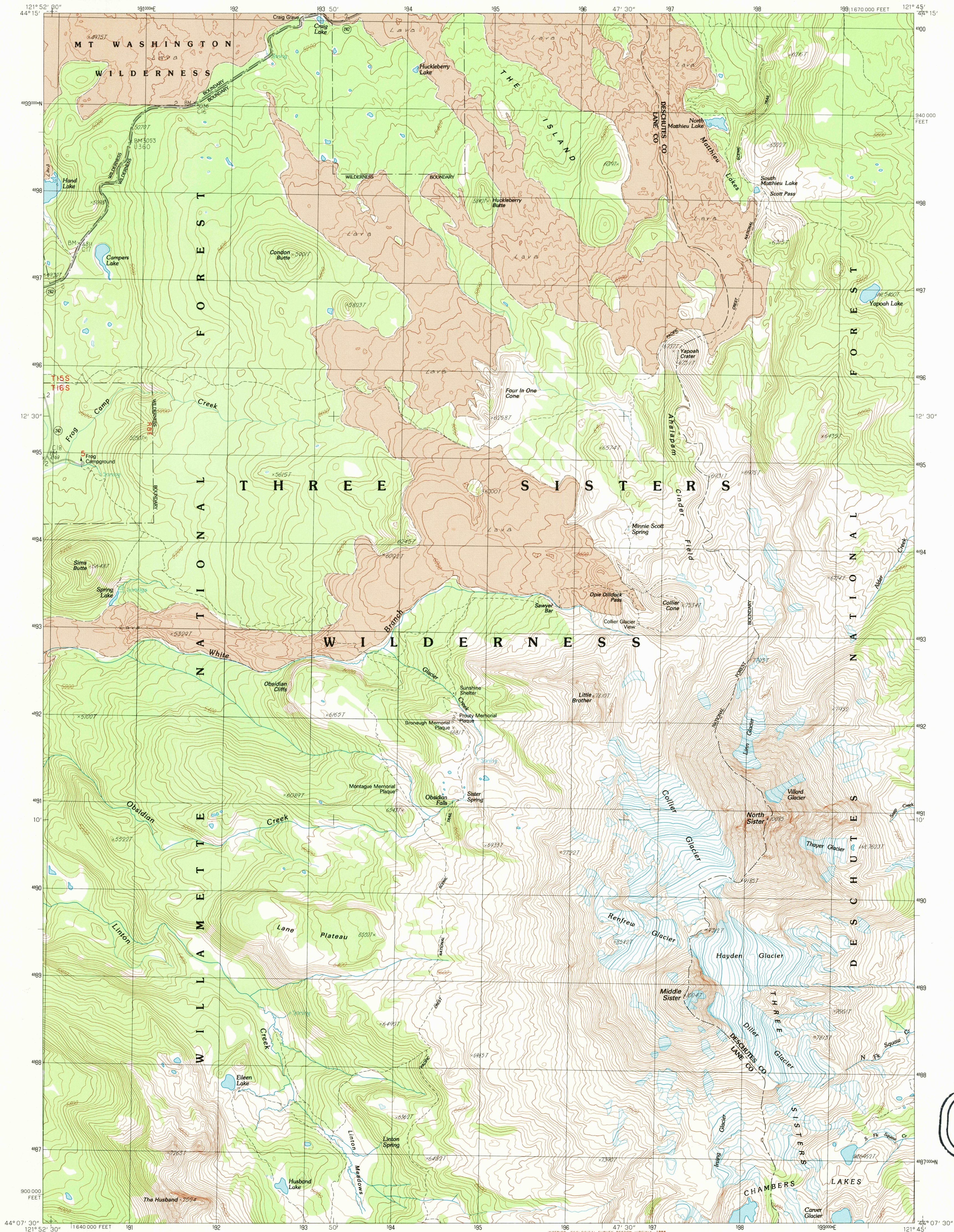


UNITED STATES
DEPARTMENT OF THE INTERIOR
GEOLOGICAL SURVEY

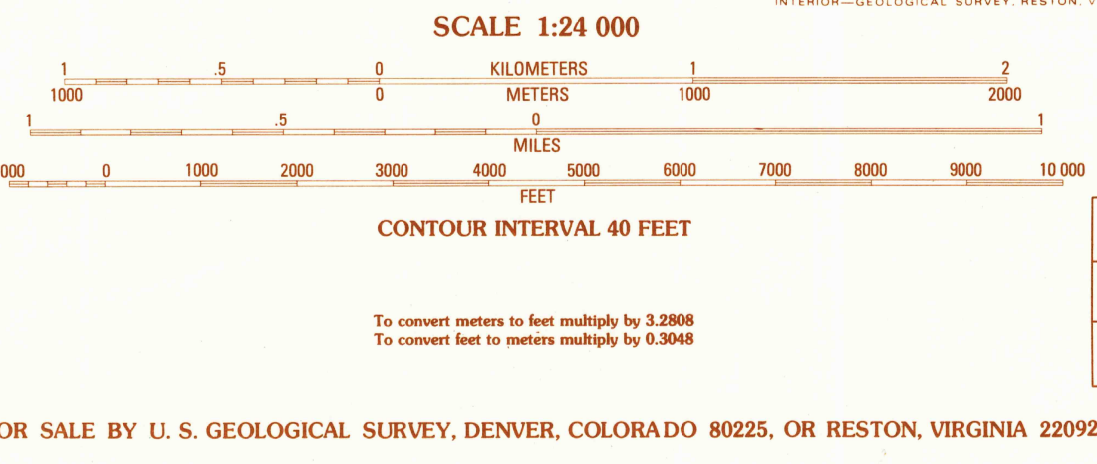
NORTH SISTER QUADRANGLE
OREGON
7.5 MINUTE SERIES (TOPOGRAPHIC)



USGS NHD HISTORICAL
MAP ARCHIVES
AUG 6 4 1995
REC'D FILE COPY

PRODUCED BY THE UNITED STATES GEOLOGICAL SURVEY
CONTROL BY USGS, NOS/NOAA, STATE OF OREGON
COMPILED FROM AERIAL PHOTOGRAPHS TAKEN 1957
FIELD CHECKED 1959
LIMITED REVISION FROM AERIAL PHOTOGRAPHS TAKEN 1979/1982
FIELD CHECKED 1984, MAP EDITED 1988
PROJECTION: 1000-METER UNIVERSAL TRANSVERSE MERCATOR, ZONE 10
GRID: 1000-FOOT STATE GRID TICS, OREGON, SOUTH ZONE
UTM GRID DECLINATION 0°50' EAST
1988 MAGNETIC NORTH DECLINATION 1990° EAST
VERTICAL DATUM: NATIONAL GEODETIC VERTICAL DATUM OF 1929
HORIZONTAL DATUM: 1927 NORTH AMERICAN DATUM
To place on the predicted North American Datum of 1983,
move the projection lines as shown by dashed corner ticks
(21 meters north and 93 meters east)
There may be private inholdings within the boundaries of
any Federal and State Reservation shown on this map
Public Land Survey System is shown as published in 1959
and verified or supplemented in 1984
Where omitted, landlines have not been established
No distinction made between houses, barns, and other buildings

PROVISIONAL MAP
Produced from original
manuscript drawings. Infor-
mation shown as of date of
field check.



| | | |
|---|---|---|
| 1 | 2 | 3 |
| 4 | 5 | 6 |
| 7 | 8 | |

ROAD LEGEND
Improved Road
Unimproved Road
Trail
Interstate Route
U.S. Route
State Route

NORTH SISTER, OREG.
PROVISIONAL EDITION 1988

44121-B7-TF-024

