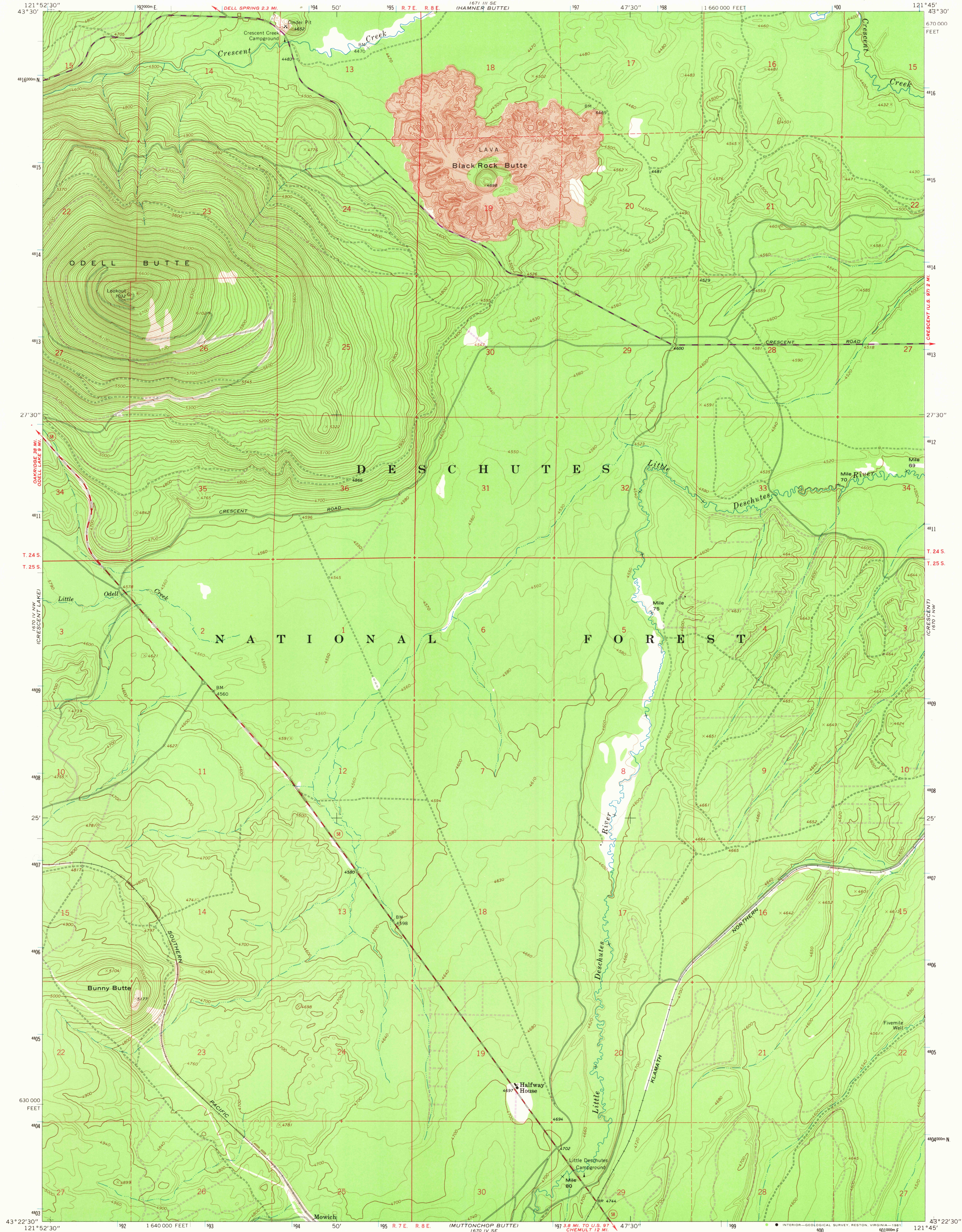


UNITED STATES
DEPARTMENT OF THE INTERIOR
GEOLOGICAL SURVEY

ODELL BUTTE QUADRANGLE
OREGON-KLAMATH CO.
7.5 MINUTE SERIES (TOPOGRAPHIC)

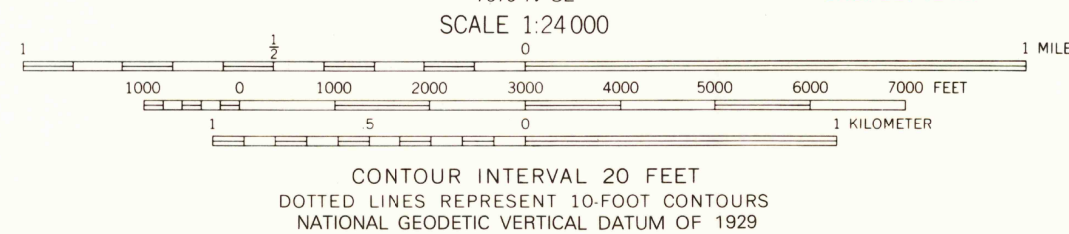
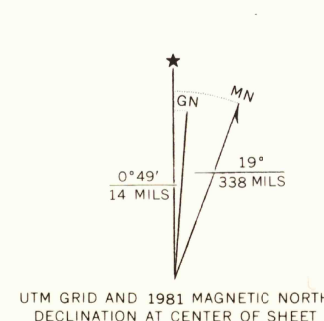


Mapped, edited, and published by the Geological Survey

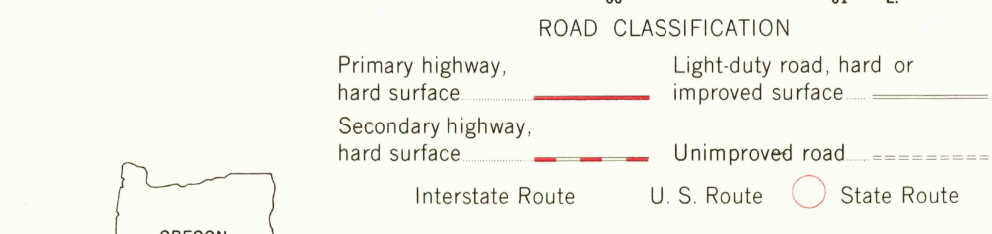
Control by USGS, NOS/NOAA
Topography by photogrammetric methods from aerial
photographs taken 1963. Field checked 1967

Polyconic projection. 1927 North American datum
10,000-foot grid based on Oregon coordinate system,
south zone
1000-meter Universal Transverse Mercator grid ticks,
zone 10, shown in blue
To place on the predicted North American Datum 1983,
move the projection lines 20 meters north and
92 meters east as shown by dashed corner ticks

There may be private inholdings within the boundaries of
the National or State reservations shown on this map



THIS MAP COMPLIES WITH NATIONAL MAP ACCURACY STANDARDS
FOR SALE BY U. S. GEOLOGICAL SURVEY, DENVER, COLORADO 80225, OR RESTON, VIRGINIA 22092
A FOLDER DESCRIBING TOPOGRAPHIC MAPS AND SYMBOLS IS AVAILABLE ON REQUEST



ODELL BUTTE, OREG.
N4322.5-W12145.7.5

1967
PHOTOREVISED 1981
DMA 1670 IV NE-SERIES V892

Revisions shown in purple compiled from aerial photographs
taken 1979 and other source data. This information not
field checked. Map edited 1981

SEP 21 1981
2050
USGS
HISTORICAL FILE
NATIONAL MAPPING DIVISION