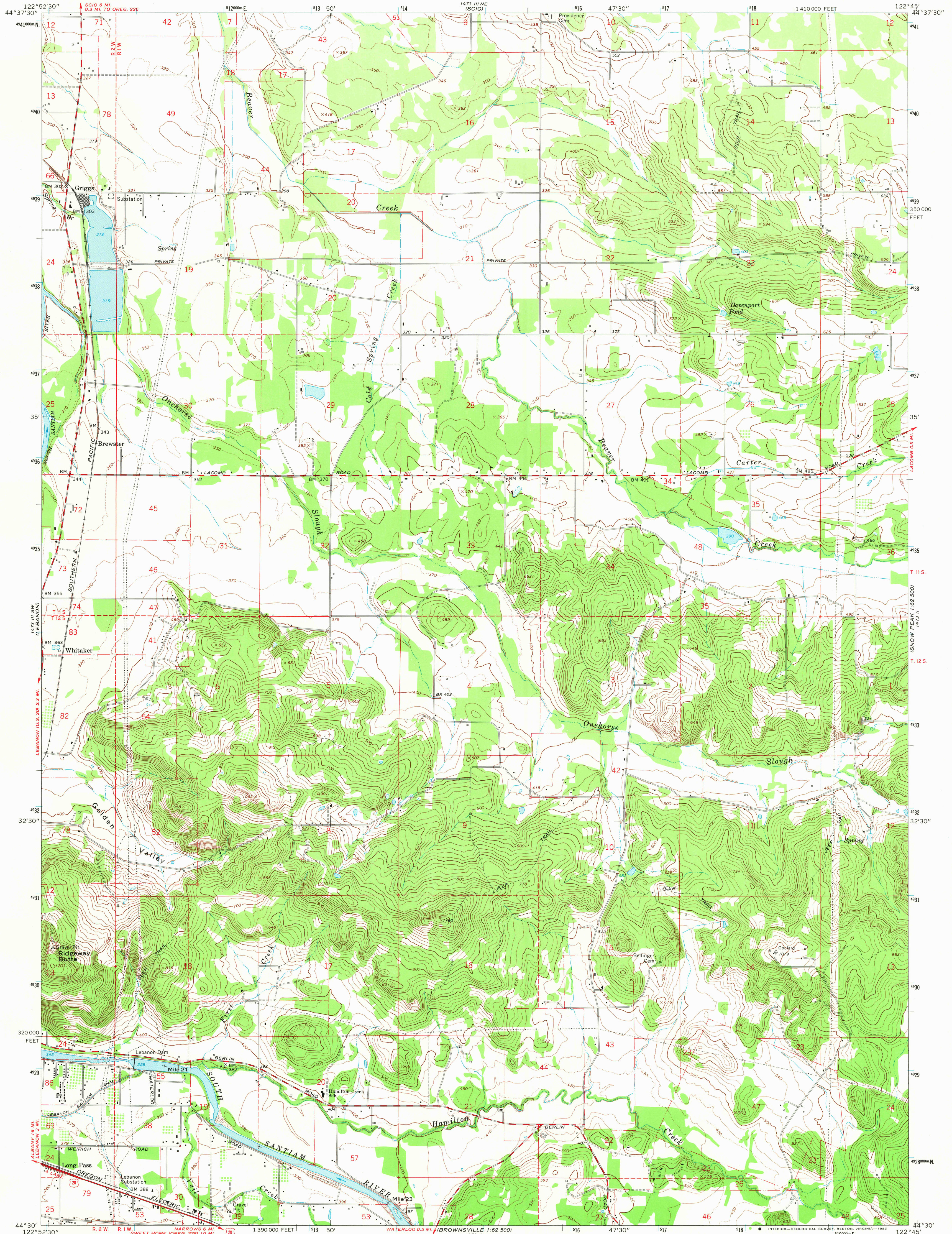
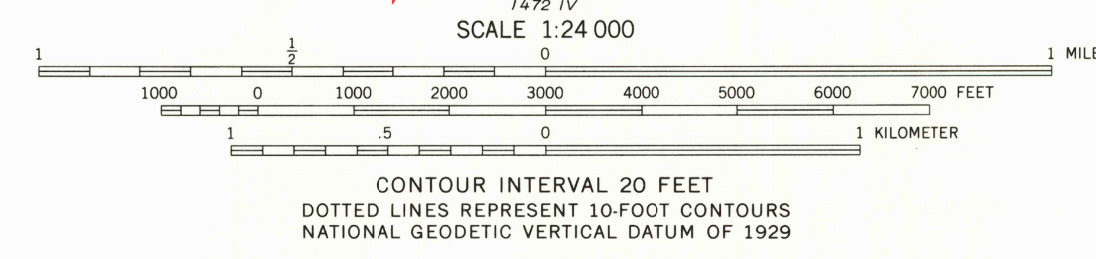


UNITED STATES
DEPARTMENT OF THE INTERIOR
GEOLOGICAL SURVEY

ONEHORSE SLOUGH QUADRANGLE
OREGON - LINN CO.
7.5 MINUTE SERIES (TOPOGRAPHIC)
SE/4 LEBANON 15' QUADRANGLE



Mapped, edited, and published by the Geological Survey
Control by USGS, USC&GS, and State of Oregon
Topography by photogrammetric methods from aerial
photographs taken 1967. Field checked 1969
Polyconic projection. 1927 North American datum
10,000-foot grid based on Oregon coordinate system,
north zone
1000-meter Universal Transverse Mercator grid ticks,
zone 10, shown in blue
To place on the predicted North American Datum 1983,
move the projection lines 22 meters north and
34 meters east as shown by dashed corner ticks
Fine red dashed lines indicate selected fence lines
There may be private inholdings within the boundaries of
the National or State reservations shown on this map



ROAD CLASSIFICATION
Primary highway, all weather, hard surface
Secondary highway, all weather, hard surface
Light-duty road, all weather, improved surface
Unimproved road, fair or dry weather
U. S. Route

ONEHORSE SLOUGH, OREG.
SE/4 LEBANON 15' QUADRANGLE
N4430-W12245/7.5

1969
PHOTOINSPECTED 1975
DMA 1473 III SE-SERIES V892

THIS MAP COMPLIES WITH NATIONAL MAP ACCURACY STANDARDS
FOR SALE BY U. S. GEOLOGICAL SURVEY, DENVER, COLORADO 80225, OR RESTON, VIRGINIA 22092
A FOLDER DESCRIBING TOPOGRAPHIC MAPS AND SYMBOLS IS AVAILABLE ON REQUEST

Map photoinspected 1975
No major culture or drainage changes observed

RETURN TO:
USGS AND HISTORICAL MAP ARCHIVES

APR 11 1989

SWEET HOME 1:62,500