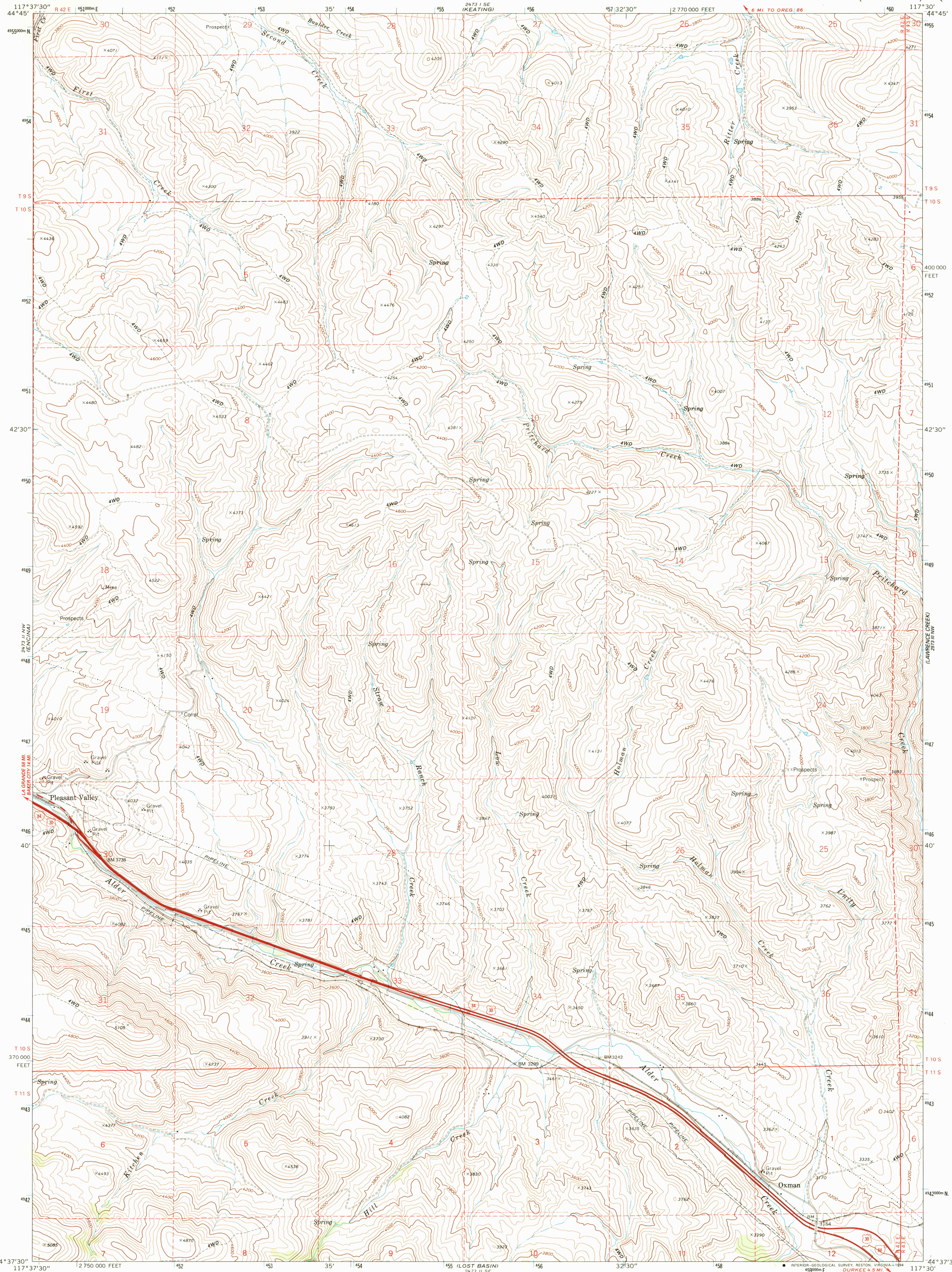
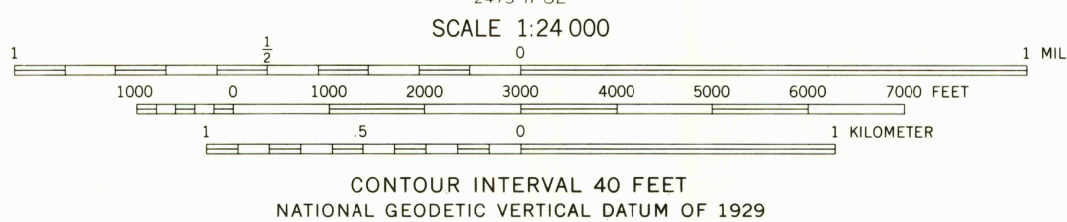
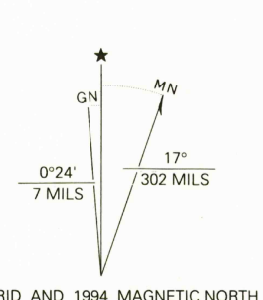


UNITED STATES
DEPARTMENT OF THE INTERIOR
GEOLOGICAL SURVEY

OXMAN QUADRANGLE
OREGON—BAKER CO.
7.5 MINUTE SERIES (TOPOGRAPHIC)

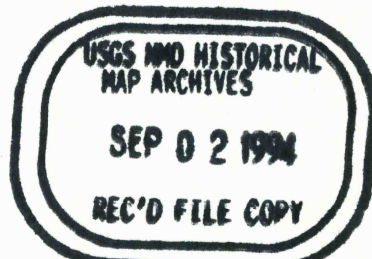


Produced by the United States Geological Survey
Control by USGS and NOS/NOAA
Compiled from aerial photographs taken 1966. Revised from aerial
photographs taken 1988 and other sources. Field checked 1992
Map edited 1994
North American Datum of 1927 (NAD 27). Projection and
10,000-foot ticks: Oregon Coordinate System, north zone
(Lambert Conformal Conic)
Blue 1000-meter Universal Transverse Mercator ticks, zone 11
North American Datum of 1983 (NAD 83) is shown by dashed
corner ticks. The values of the shift between NAD 27 and NAD 83
for 7.5-minute intersections are obtainable from National Geodetic
Survey NADCON software
Fine red dashed lines indicate selected fence and field lines where
generally visible on aerial photographs. This information is unchecked



ROAD CLASSIFICATION
Heavy-duty ——— Light-duty ———
Medium-duty ——— Unimproved dirt ———
Interstate Route U.S. Route

OXMAN, OR
44117-F5-TF-024
1994



THIS MAP COMPLIES WITH NATIONAL MAP ACCURACY STANDARDS
FOR SALE BY U.S. GEOLOGICAL SURVEY
DENVER, COLORADO 80225, OR RESTON, VIRGINIA 22092
A FOLDER DESCRIBING TOPOGRAPHIC MAPS AND SYMBOLS IS AVAILABLE ON REQUEST

DMA 2473 II NE-SERIES V892