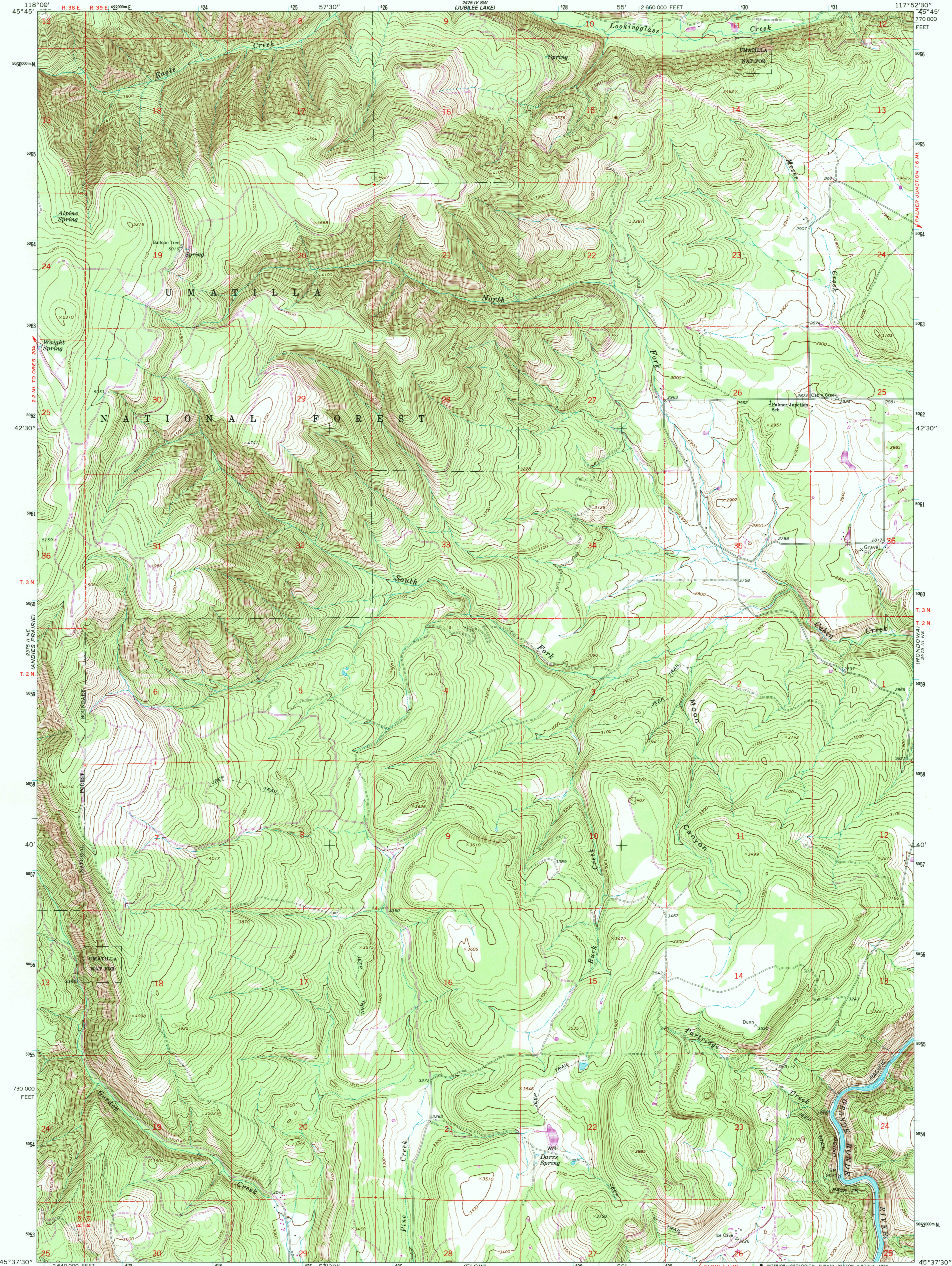


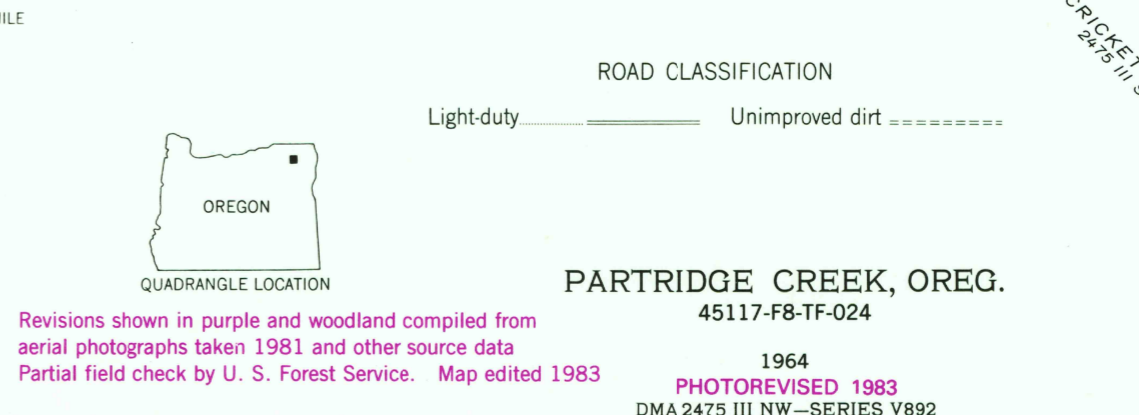
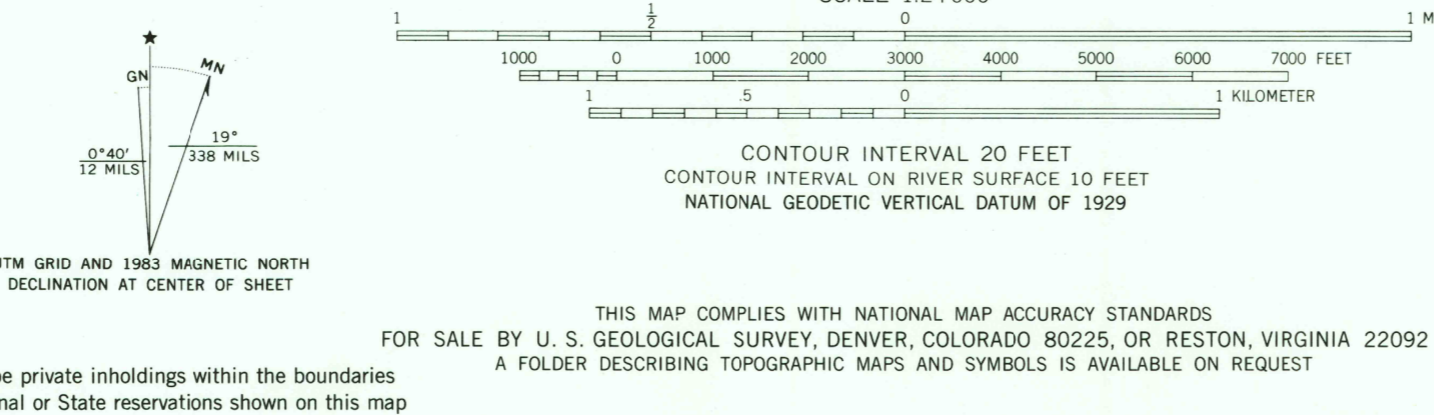
2475 III SW
(JUBILEE LAKE)

2475 III SW
(JUBILEE LAKE)



118°00' 2640 000 FEET 124 125 57°30' 126 55' 2 660 000 FEET 130 117°52'30" 45°45' 270 000 FEET
56600m N
565
564
563
562
561
560
559
558
557
556
555
554
553
552
551
550
549
548
547
546
545
544
543
542
541
540
539
538
537
536
535
534
533
532
531
530
529
528
527
526
525
524
523
522
521
520
519
518
517
516
515
514
513
512
511
510
509
508
507
506
505
504
503
502
501
500
730 000 FEET
563
562
561
560
559
558
557
556
555
554
553
552
551
550
549
548
547
546
545
544
543
542
541
540
539
538
537
536
535
534
533
532
531
530
529
528
527
526
525
524
523
522
521
520
519
518
517
516
515
514
513
512
511
510
509
508
507
506
505
504
503
502
501
500
595300m N
595
594
593
592
591
590
589
588
587
586
585
584
583
582
581
580
579
578
577
576
575
574
573
572
571
570
569
568
567
566
565
564
563
562
561
560
559
558
557
556
555
554
553
552
551
550
549
548
547
546
545
544
543
542
541
540
539
538
537
536
535
534
533
532
531
530
529
528
527
526
525
524
523
522
521
520
519
518
517
516
515
514
513
512
511
510
509
508
507
506
505
504
503
502
501
500

Mapped, edited, and published by the Geological Survey
Control by USGS and NOS/NOAA
Topography by photogrammetric methods from aerial photographs taken 1959. Field checked 1964
Polyconic projection. 1927 North American Datum
10,000-foot grid based on Oregon coordinate system, north zone
1000-meter Universal Transverse Mercator grid ticks, zone 11, shown in blue
Where omitted, land lines have not been established
Fine red dashed lines indicate selected fence lines
To place on the predicted North American Datum 1983 move the projection lines 17 meters north and 81 meters east as shown by dashed corner ticks



PARTRIDGE CREEK, OREG.
45117-F8-TF-024
1964
PHOTOREVISED 1983
DMA 2475 III NW—SERIES V892

RETURN TO:
USGS AND HISTORICAL MAP ARCHIVES

JUL 11 1994