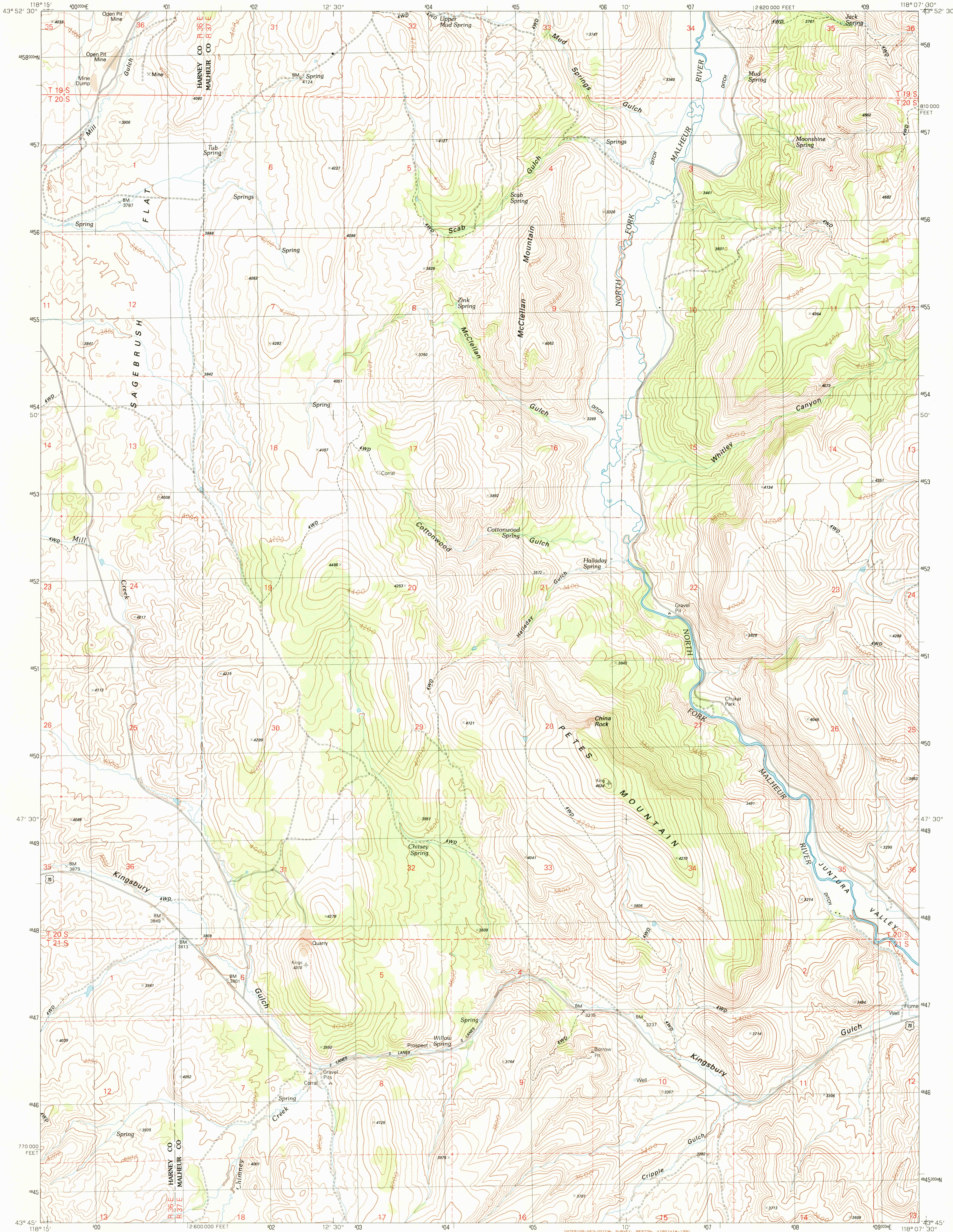


UNITED STATES
DEPARTMENT OF THE INTERIOR
GEOLOGICAL SURVEY

PETES MOUNTAIN QUADRANGLE
OREGON
7.5 MINUTE SERIES (TOPOGRAPHIC)



PRODUCED BY THE UNITED STATES GEOLOGICAL SURVEY
CONTROL BY USGS, NOS/NOAA
COMPILED FROM AERIAL PHOTOGRAPHS TAKEN 1966
FIELD CHECKED 1966
LIMITED REVISION FROM AERIAL PHOTOGRAPHS TAKEN 1983
FIELD CHECKED 1987
PROJECTION LAMBERT CONFORMAL CONIC
GRID: 100-METER UNIVERSAL TRANSVERSE MERCATOR ZONE 11
6000-FOOT STATE GRID TICKS OREGON, SOUTH ZONE
UTM GRID DECLINATION 0°49' WEST
1990 MAGNETIC NORTH DECLINATION 17° EAST
VERTICAL DATUM NATIONAL GEODETIC VERTICAL DATUM OF 1929
HORIZONTAL DATUM 1927 NORTH AMERICAN DATUM
To place on the predicted North American Datum of 1983,
move the projection lines as shown by dashed corner ticks
(17 meters north and 82 meters east)
There may be private inholdings within the boundaries of any
Federal and State Reservations shown on this map.
Public Land Survey System is shown as published in 1966 and
verified or supplemented in 1987

PROVISIONAL MAP
Produced from original
manuscript drawings. Informa-
tion shown as of date of
field check.

