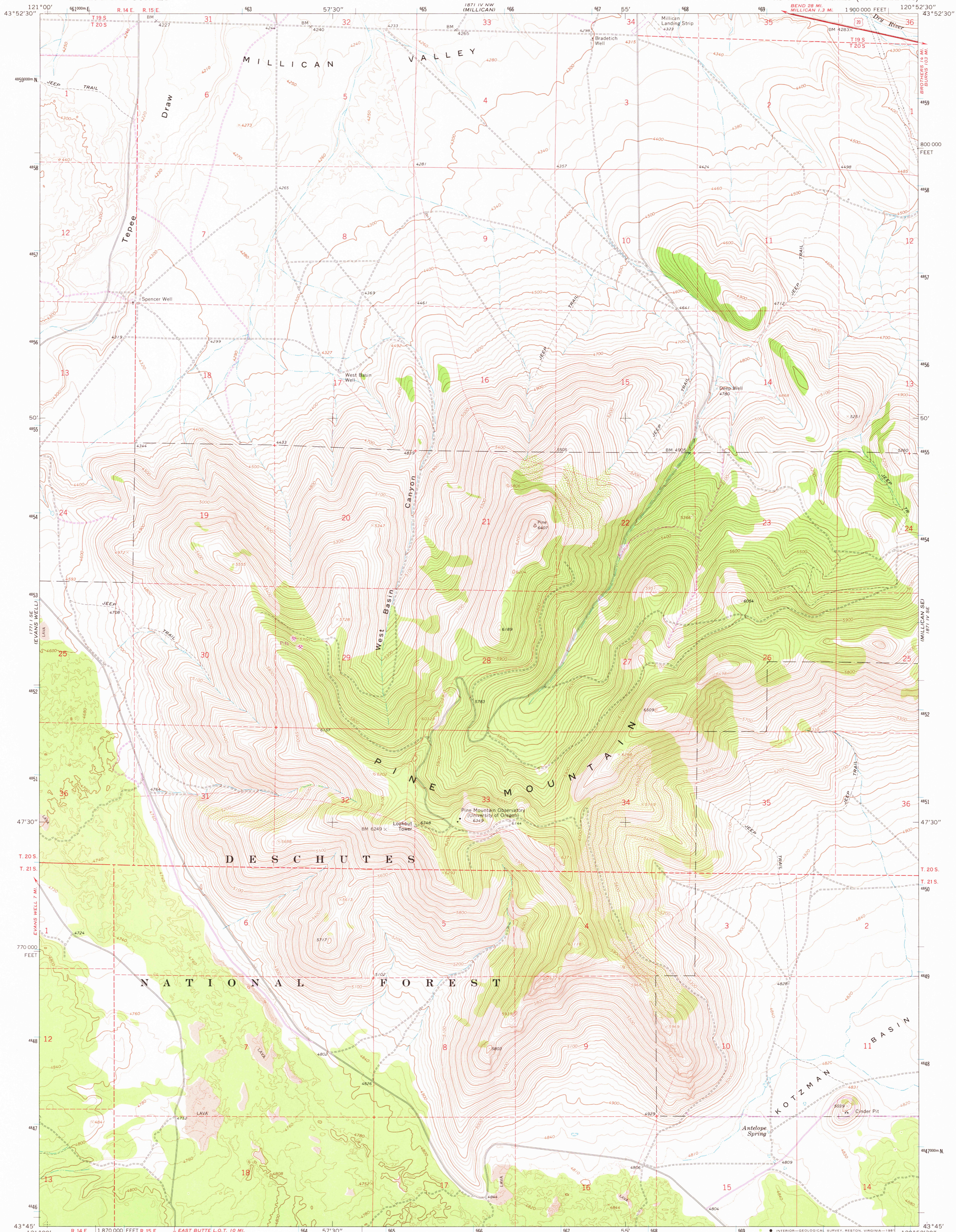


UNITED STATES
DEPARTMENT OF THE INTERIOR
GEOLOGICAL SURVEY

PINE MOUNTAIN QUADRANGLE
OREGON—DESCHUTES CO.
7.5 MINUTE SERIES (TOPOGRAPHIC)



Mapped, edited, and published by the Geological Survey

Control by USGS, NOS/NOAA, and U.S. Forest Service

Topography by photogrammetric methods from aerial photographs taken 1963. Field checked 1967

Polygonic projection. 1927 North American datum

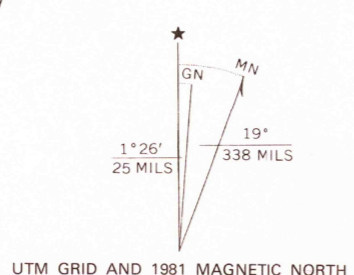
10,000-foot grid based on Oregon coordinate system, south zone

1000-meter Universal Transverse Mercator grid ticks, zone 10, shown in blue

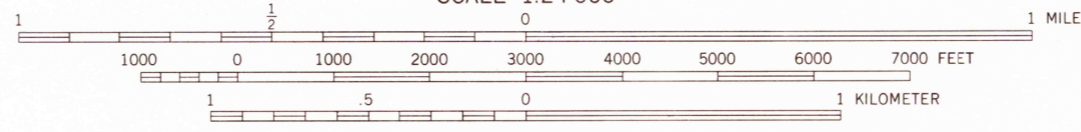
To place on the predicted North American Datum 1983 move the projection lines 20 meters north and 91 meters east as shown by dashed corner ticks

Fine red dashed lines indicate selected fence lines

There may be private inholdings within the boundaries of the National or State reservations shown on this map



SCALE 1:24 000



CONTOUR INTERVAL 20 FEET
DOTTED LINES REPRESENT 10-FOOT CONTOURS
NATIONAL GEODETIC VERTICAL DATUM OF 1929



ROAD CLASSIFICATION
Heavy-duty ——— Light-duty ———
Unimproved dirt - - - - -
U.S. Route □

THIS MAP COMPLIES WITH NATIONAL MAP ACCURACY STANDARDS
FOR SALE BY U. S. GEOLOGICAL SURVEY, DENVER, COLORADO 80225, OR RESTON, VIRGINIA 22092
A FOLDER DESCRIBING TOPOGRAPHIC MAPS AND SYMBOLS IS AVAILABLE ON REQUEST

Revisions shown in purple compiled by the U.S. Forest Service from aerial photographs taken 1979 and other source data. This information not field checked. Map edited 1991

1967
PHOTOREVISED 1981
DMA 1871 IV SW—SERIES V892

PINE MOUNTAIN, OREG.
N4345—W12052.5/7.5

RETURN TO:
USGS AND HISTORICAL MAP ARCHIVES

DEC 24 1991

2400