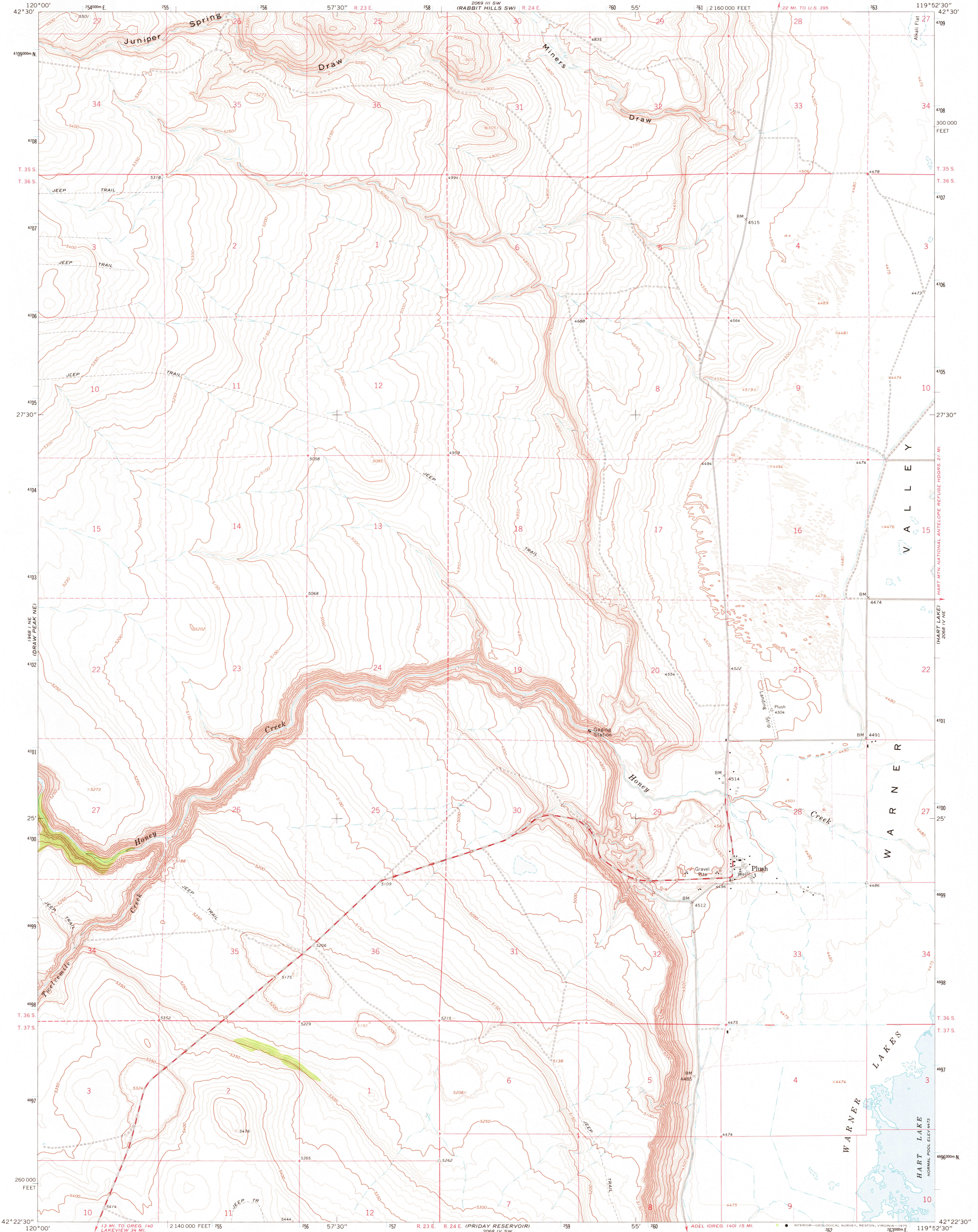


1962 U.S. G.P.O. (COPPER DRAW)

1969 U.S. G.P.O. (FLAGSTIFF LAKE)



Mapped, edited, and published by the Geological Survey

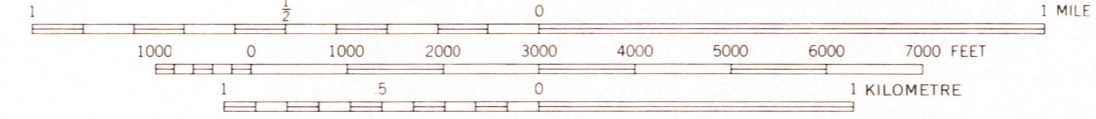
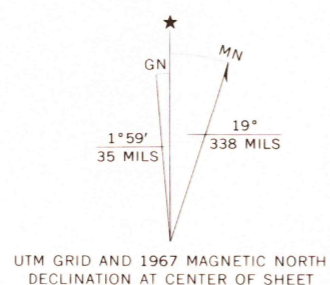
Control by USGS and USC&GS

Topography by photogrammetric methods from aerial photographs taken 1964. Field checked 1967

Polyconic projection. 1927 North American datum, 10,000-foot grid based on Oregon coordinate system, south zone

1000-metre Universal Transverse Mercator grid ticks, zone 11, shown in blue

Fine red dashed lines indicate selected fence lines



CONTOUR INTERVAL 10 FEET  
DOTTED LINES REPRESENT 5-FOOT CONTOURS  
NATIONAL GEODETIC VERTICAL DATUM OF 1929

ROAD CLASSIFICATION  
Medium-duty ——— Light-duty ———  
Unimproved dirt - - - - -



USGS  
HISTORICAL FILE  
TOPOGRAPHIC DIVISION

PLUSH, OREG.  
N4222.5—W11952.5/7.5

1967

4340  
DUPLICATE  
AUG 26 1975

THIS MAP COMPLIES WITH NATIONAL MAP ACCURACY STANDARDS  
FOR SALE BY U.S. GEOLOGICAL SURVEY, DENVER, COLORADO 80225, OR RESTON, VIRGINIA 22092  
A FOLDER DESCRIBING TOPOGRAPHIC MAPS AND SYMBOLS IS AVAILABLE ON REQUEST

AMS 2068 IV NW—SERIES V892