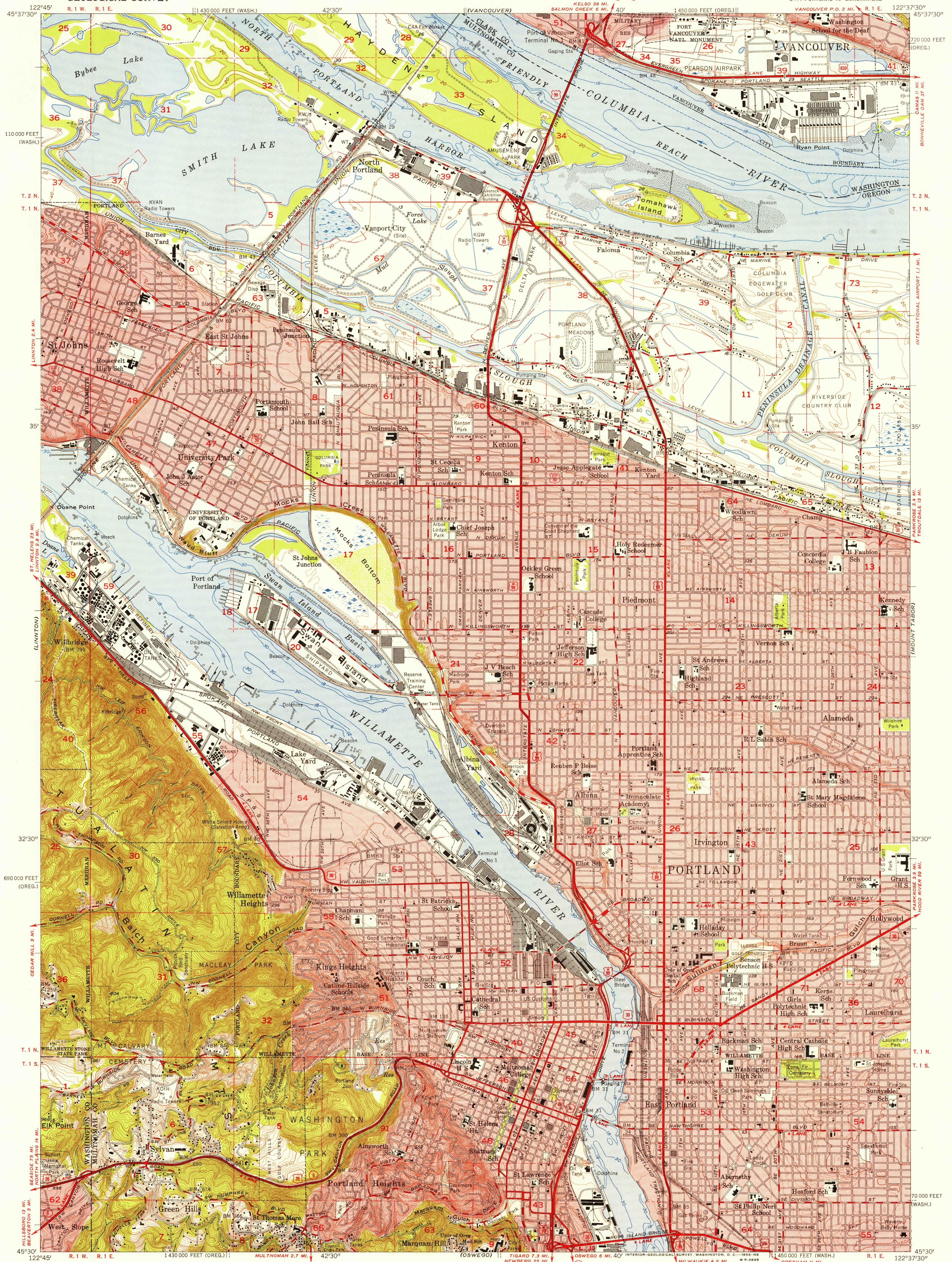


UNITED STATES
DEPARTMENT OF THE INTERIOR
GEOLOGICAL SURVEY

PORTLAND QUADRANGLE
OREGON—WASHINGTON
7.5 MINUTE SERIES (TOPOGRAPHIC)
SW/4 PORTLAND 15' QUADRANGLE



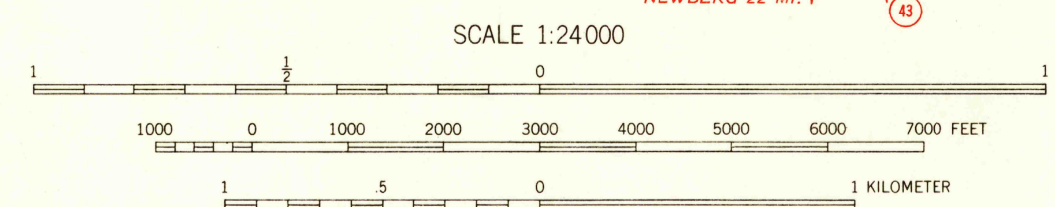
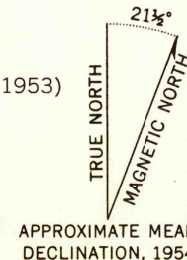
Maped, edited, and published by the Geological Survey
Control by USC&GS and State of Oregon

Topography from aerial photographs by stereoplanigraph
and by planetarium surveys. Culture and drainage in part by USC&GS
Aerial photographs taken 1951. Field check 1954

Hydrography compiled from USC&GS Charts 6155 (1954), and 6156 (1953)

Polyconic projection. 1927 North American datum
10,000-foot grids based on Oregon coordinate system, north zone
and Washington coordinate system, south zone

Red tint indicates areas in which only landmark buildings are shown
Dashed land lines indicate approximate locations



CONTOUR INTERVAL 10 FEET
DATUM IS MEAN SEA LEVEL
DEPTH CURVES IN FEET—COLUMBIA RIVER DATUM
SHORELINE SHOWN REPRESENTS THE APPROXIMATE LINE OF MEAN HIGH WATER
THE AVERAGE RANGE OF TIDE IS APPROXIMATELY 2 FEET

THIS MAP COMPLIES WITH NATIONAL MAP ACCURACY STANDARDS
FOR SALE BY U. S. GEOLOGICAL SURVEY, FEDERAL CENTER, DENVER, COLORADO OR WASHINGTON 25, D. C.
A FOLDER DESCRIBING TOPOGRAPHIC MAPS AND SYMBOLS IS AVAILABLE ON REQUEST

USGS
Historical File
Topographic Division



ROAD CLASSIFICATION
Heavy-duty ————— Light-duty —————
Medium-duty ————— Unimproved dirt —————
U. S. Route ———— State Route ————

PORTLAND, OREG.—WASH.
SW/4 PORTLAND 15' QUADRANGLE
N 4530 W 12237.5/7.5

1954

U.S.G.S.
FILE COPY
TOPOGRAPHIC DIVISION

U.S.G.S.
FILE COPY
TOPOGRAPHIC DIVISION

DEC 21 1956
4675