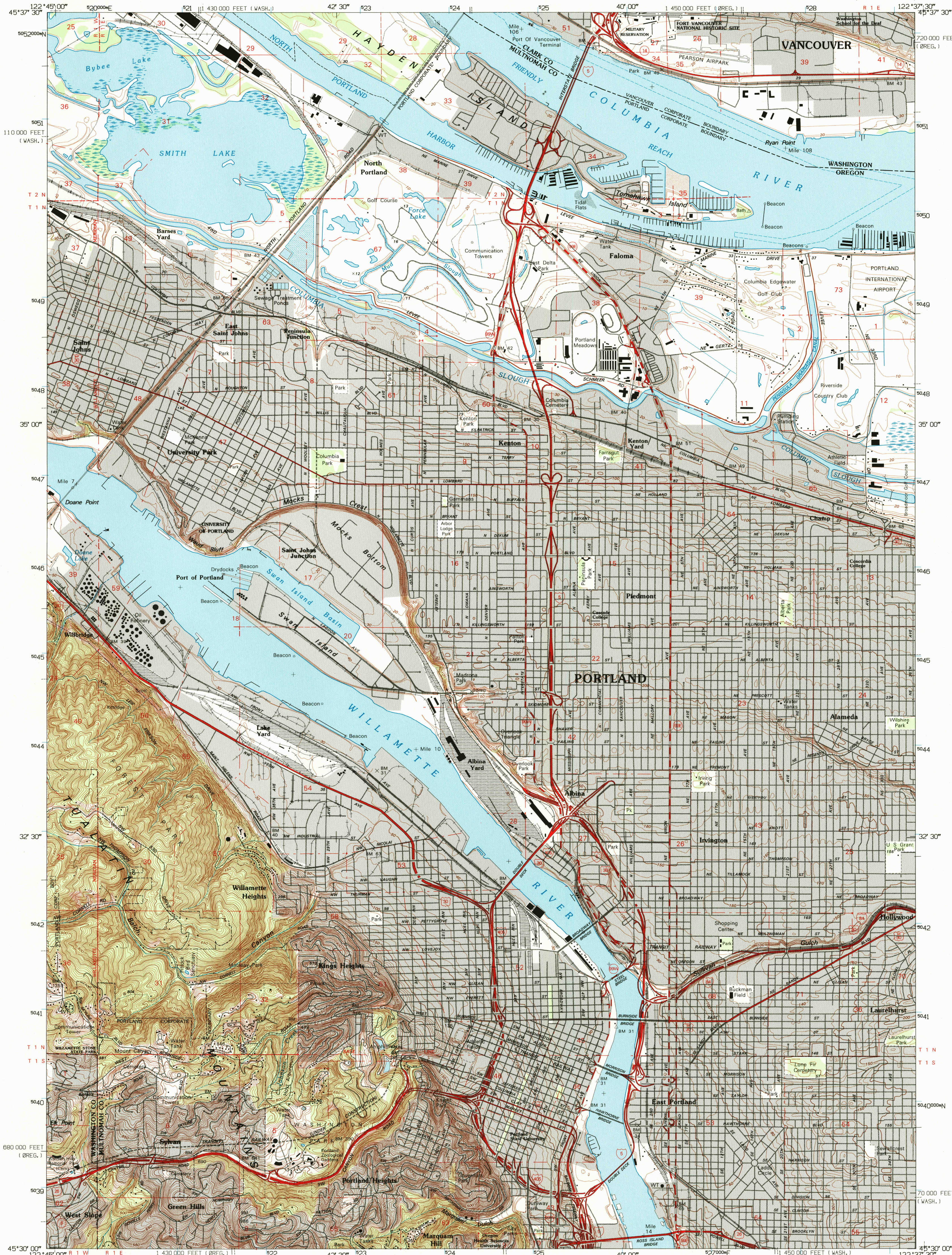
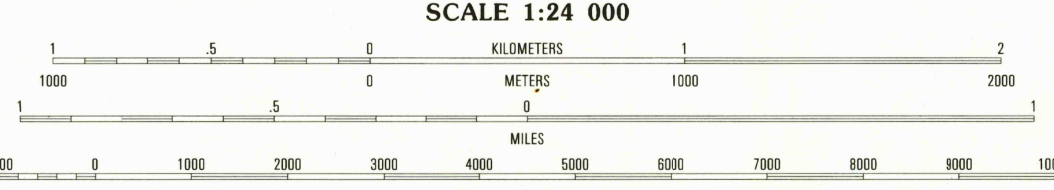
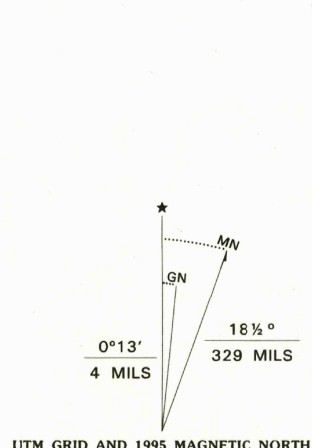


UNITED STATES  
DEPARTMENT OF THE INTERIOR  
GEOLOGICAL SURVEY

PORTLAND QUADRANGLE  
OREGON-WASHINGTON  
7.5-MINUTE SERIES (TOPOGRAPHIC)



Produced by the United States Geological Survey  
Control by USGS, NOS/NOAA and State of Oregon  
Compiled from imagery dated 1951. Revised from imagery  
dated 1990. PLSS and survey control current as of 1961  
Map edited 1995. Contours and land elevations have  
not been revised and may conflict with other content  
North American Datum of 1927 (NAD 27). Projection and  
blue 1000-meter ticks: Universal Transverse Mercator, zone 10  
10 000-foot ticks: Oregon Coordinate System, north zone and  
Washington Coordinate System, south zone  
North American Datum of 1983 (NAD 83) is shown by dashed  
corner ticks. The values of the shift between NAD 27  
and NAD 83 for 7.5-minute intersections are obtainable from  
National Geodetic Survey NADCON software  
There may be private inholdings within the boundaries of  
the National or State reservations shown on this map



CONTOUR INTERVAL 10 FEET  
NATIONAL GEODETIC VERTICAL DATUM OF 1929  
SHORELINE REPRESENTS THE APPROXIMATE LINE OF MEAN HIGH WATER  
THE MEAN RANGE OF TIDE IS APPROXIMATELY 2 FEET  
TO CONVERT FEET TO METERS MULTIPLY BY 0.3048  
TO CONVERT METERS TO FEET MULTIPLY BY 3.2808

THIS MAP COMPLIES WITH NATIONAL MAP ACCURACY STANDARDS  
FOR SALE BY U.S. GEOLOGICAL SURVEY  
DENVER, COLORADO 80225, OR RESTON, VIRGINIA 22092  
A FOLDER DESCRIBING TOPOGRAPHIC MAPS AND SYMBOLS IS AVAILABLE ON REQUEST



ROAD CLASSIFICATION  
Primary highway .....  
hard surface .....  
Secondary highway .....  
hard surface .....  
Unimproved road .....  
Interstate Route .....  
U.S. Route .....  
State Route .....

1	2	3
4	5	6
7	8	9

ADJOINING 7.5' QUADRANGLE NAMES

PORTLAND, OR-WA  
45122-EG-TF-024

1990

DMA 1475 II SW-SERIES V892

U.S. GEOLOGICAL SURVEY  
JAN 3 1997  
REC'D FILE COPY

