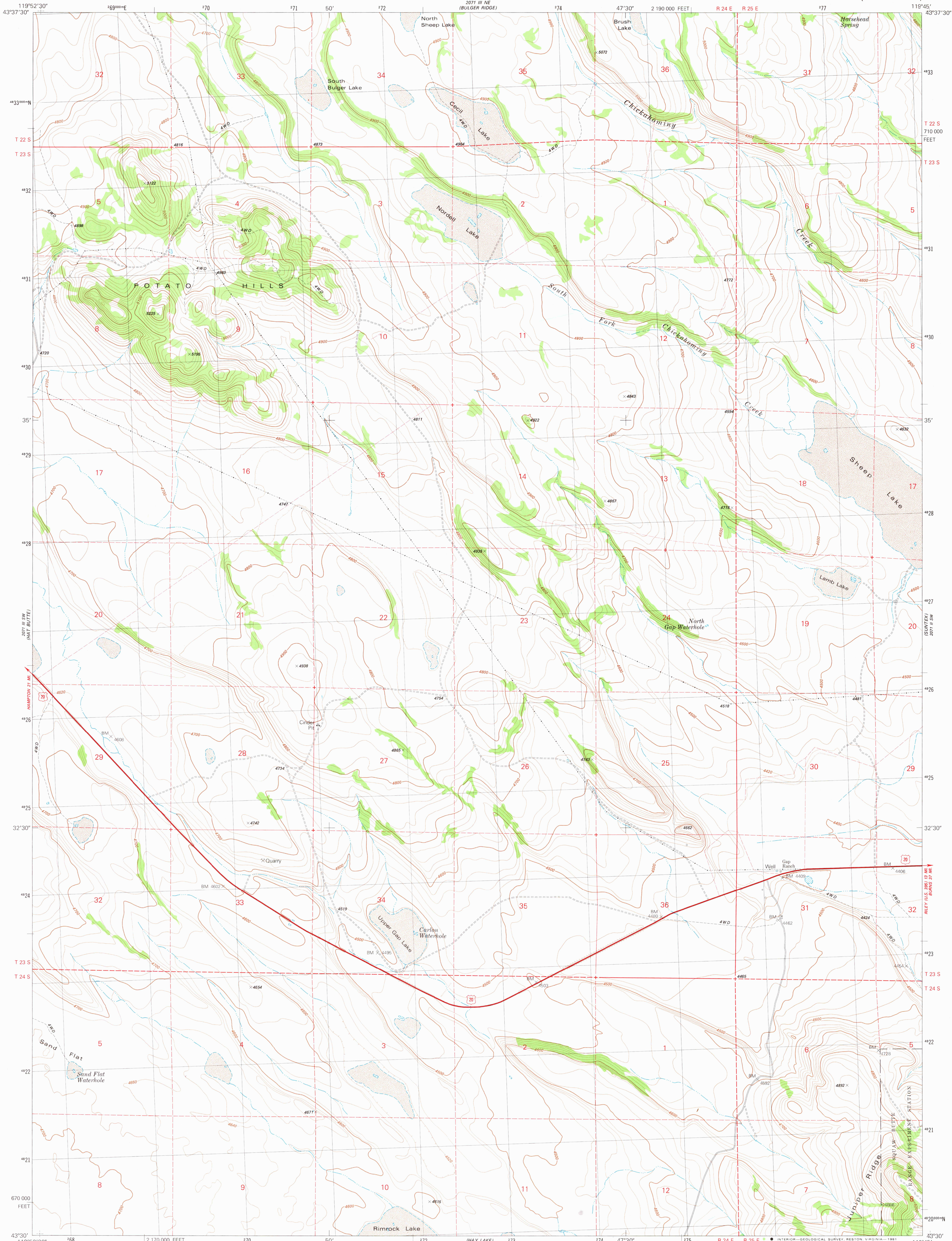
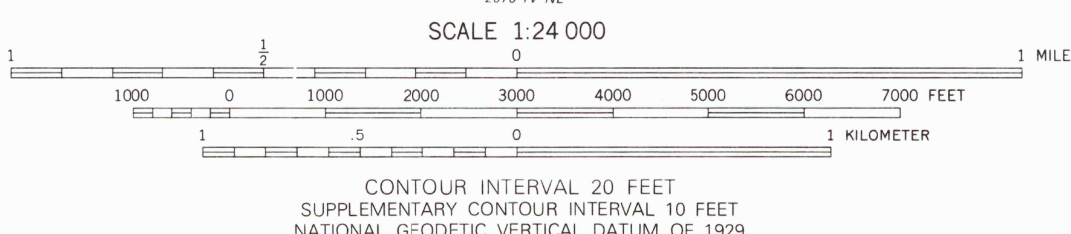
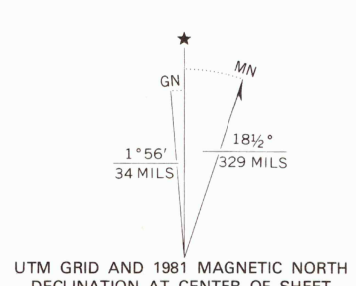


207 III SE  
CAMM 207 III SE  
CUMLEY SPRING



Mapped, edited, and published by the Geological Survey  
Control by USGS and NOS/NOAA  
Topography by photogrammetric methods from aerial photographs taken 1974. Field checked 1977  
Map edited 1981  
Projection and 10,000-foot grid ticks: Oregon coordinate system, south zone (Lambert conformal conic)  
1000-meter Universal Transverse Mercator grid, zone 11 1927 North American Datum  
To place on the predicted North American Datum 1983 move the projection lines 19 meters north and 87 meters east as shown by dashed corner ticks  
Fine red dashed lines indicate selected fence and field lines where generally visible on aerial photographs. This information is unchecked  
There may be private inholdings within the boundaries of the National or State reservations shown on this map



ROAD CLASSIFICATION

Primary highway, hard surface	Light-duty road, hard or improved surface
Secondary highway, hard surface	Unimproved road
Interstate Route	U. S. Route
	State Route



POTATO HILLS, OREG.  
N4330-W11945/7.5  
1981  
DMA 2071 III SE—SERIES V892

THIS MAP COMPLIES WITH NATIONAL MAP ACCURACY STANDARDS  
FOR SALE BY U. S. GEOLOGICAL SURVEY, DENVER, COLORADO 80225, OR RESTON, VIRGINIA 22092  
A FOLDER DESCRIBING TOPOGRAPHIC MAPS AND SYMBOLS IS AVAILABLE ON REQUEST

RETURN TO:  
USGS MID HISTORICAL MAP ARCHIVES

NOV 27 1981

8050