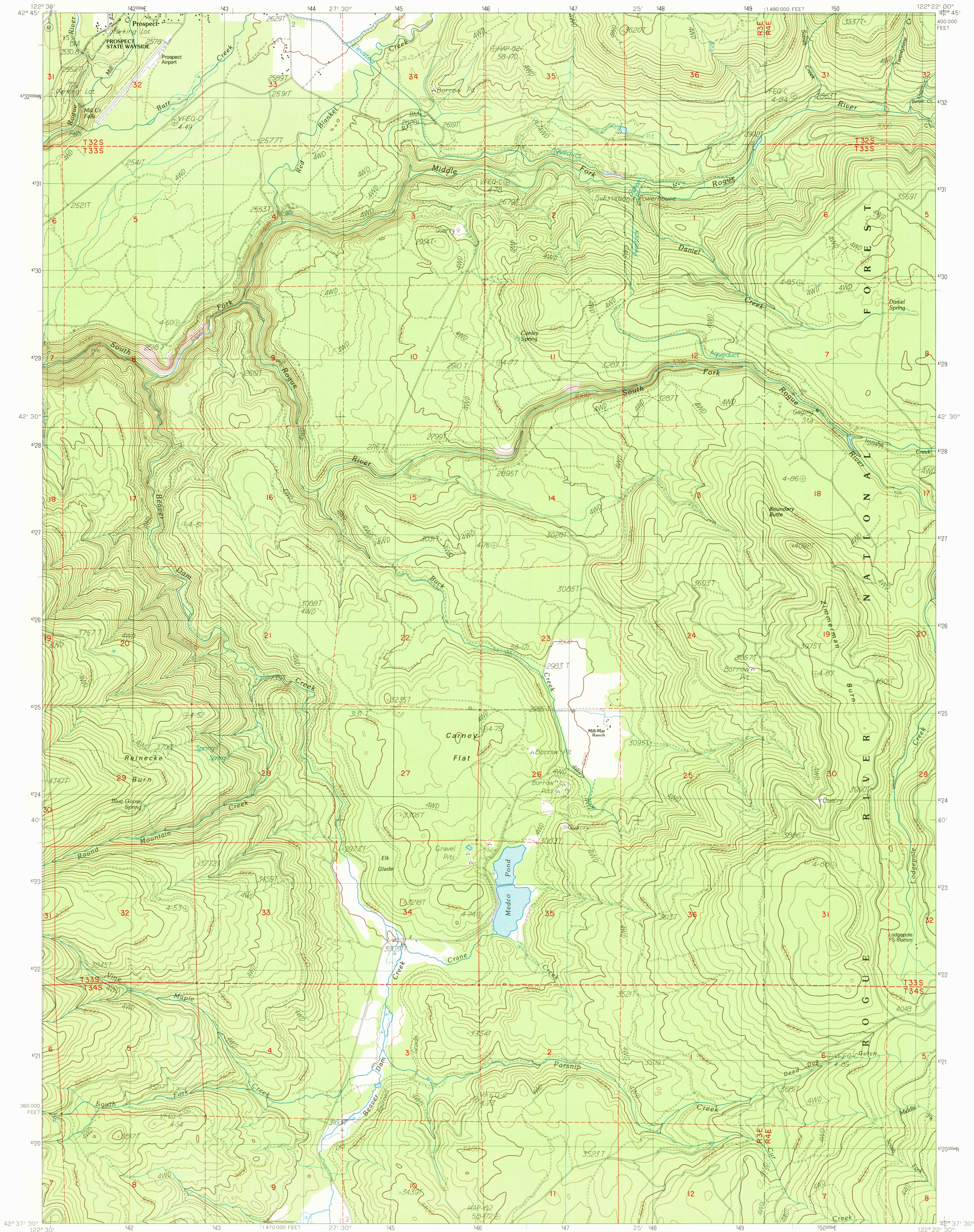


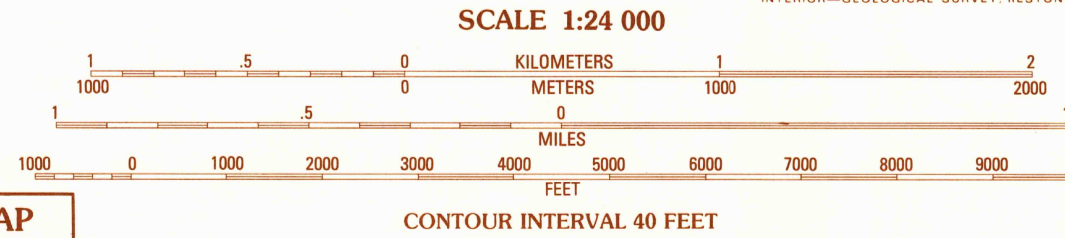
UNITED STATES
DEPARTMENT OF THE INTERIOR
GEOLOGICAL SURVEY

PROSPECT SOUTH QUADRANGLE
OREGON—JACKSON CO.
7.5 MINUTE SERIES (TOPOGRAPHIC)



PRODUCED BY THE UNITED STATES GEOLOGICAL SURVEY
CONTROL BY USGS, NOS/NOAA
COMPILED FROM AERIAL PHOTOGRAPHS TAKEN 1982-83
FIELD CHECKED 1984. MAP EDITED 1988
PROJECTION LAMBERT CONFORMAL CONIC
GRID: 1000-METER UNIVERSAL TRANSVERSE MERCATOR ZONE 10
HORIZONTAL DATUM NATIONAL GEODETIC DATUM OF 1983
UTM GRID DECLINATION 0°23' EAST
1980 MAGNETIC NORTH DECLINATION 18°30' EAST
VERTICAL DATUM NATIONAL GEODETIC DATUM OF 1983
HORIZONTAL DATUM 1927 NORTH AMERICAN DATUM
To place on the predicted North American Datum of 1983,
move the projection lines as shown by dashed corner ticks
(20 meters north / 94 meters east)
There may be private inholdings within the boundaries of any
Federal and State Reservations shown on this map
No distinction made between houses, barns, and other buildings

PROVISIONAL MAP
Produced from original
manuscript drawings. Infor-
mation shown as of date of
photography.



To convert meters to feet multiply by 3.2808
To convert feet to meters multiply by 0.3048

THIS MAP COMPLIES WITH NATIONAL MAP ACCURACY STANDARDS
FOR SALE BY U. S. GEOLOGICAL SURVEY, DENVER, COLORADO 80225, OR RESTON, VIRGINIA 22092

1	2	3	1	Whetstone Point
2	3	4	2	Prospect North
3	4	5	3	Red Blanket Mtn.
4	5	6	4	Cascade Gorge
5	6	7	5	Imnaha Creek
6	7	8	6	Butte Falls
7	8		7	Big Butte Springs
8			8	Rustler Peak

ROAD LEGEND
Improved Road
Unimproved Road
Trail
Interstate Route U.S. Route State Route

PROSPECT SOUTH, OREG.
PROVISIONAL EDITION 1988

42122-F4-TF-024

USGS NMD HISTORICAL MAP
FEB 06 1989
REC'D FILE COPY