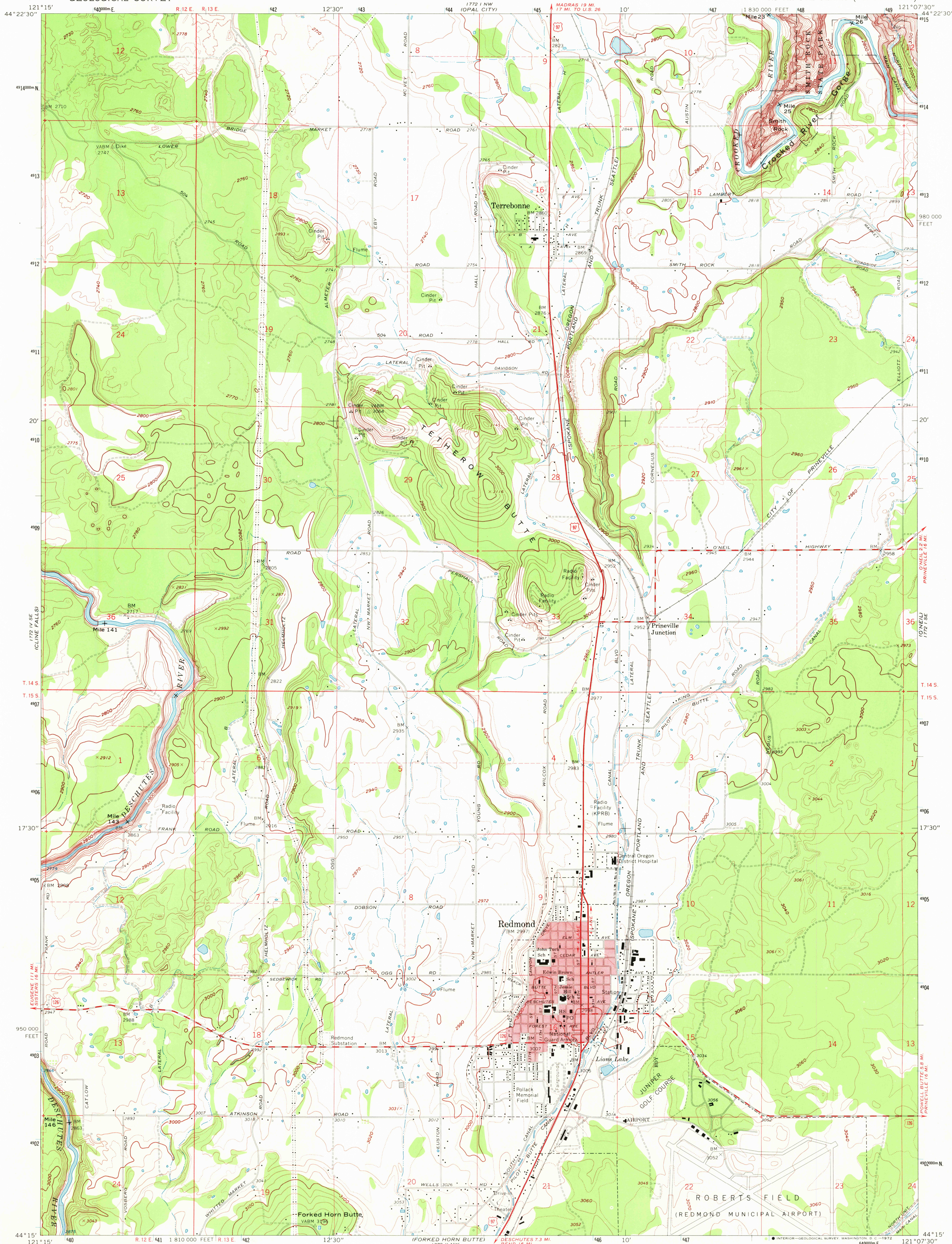
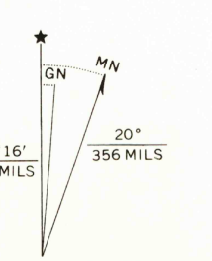


UNITED STATES
DEPARTMENT OF THE INTERIOR
GEOLOGICAL SURVEY

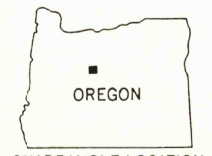
REDMOND QUADRANGLE
OREGON-DESCHUTES CO.
7.5 MINUTE SERIES (TOPOGRAPHIC)



Mapped, edited, and published by the Geological Survey
Control by USGS and USC&GS
Topography by photogrammetric methods from aerial
photographs taken 1957. Field checked 1962
Polyconic projection. 1927 North American datum
10,000-foot grid based on Oregon coordinate system, south zone
1000-meter Universal Transverse Mercator grid ticks,
zone 10, shown in blue
Red tint indicates area in which only landmark buildings are shown
Fine red dashed lines indicate selected fence lines



SCALE 1:24,000
CONTOUR INTERVAL 20 FEET
DOTTED LINES REPRESENT 10-FOOT CONTOURS
DATUM IS MEAN SEA LEVEL
THIS MAP COMPLIES WITH NATIONAL MAP ACCURACY STANDARDS
FOR SALE BY U. S. GEOLOGICAL SURVEY, DENVER, COLORADO 80225, OR WASHINGTON, D. C. 20242
A FOLDER DESCRIBING TOPOGRAPHIC MAPS AND SYMBOLS IS AVAILABLE ON REQUEST



ROAD CLASSIFICATION
Heavy-duty ——— Light-duty ———
Medium-duty ——— Unimproved dirt ———
U.S. Route

REDMOND, OREG.
N4415—W12107.5/7.5

1962
AMS 1772 I SW—SERIES V892

1962
HISTORICAL FILE
TOPOGRAPHIC DIVISION
SEP 12 1972
3005