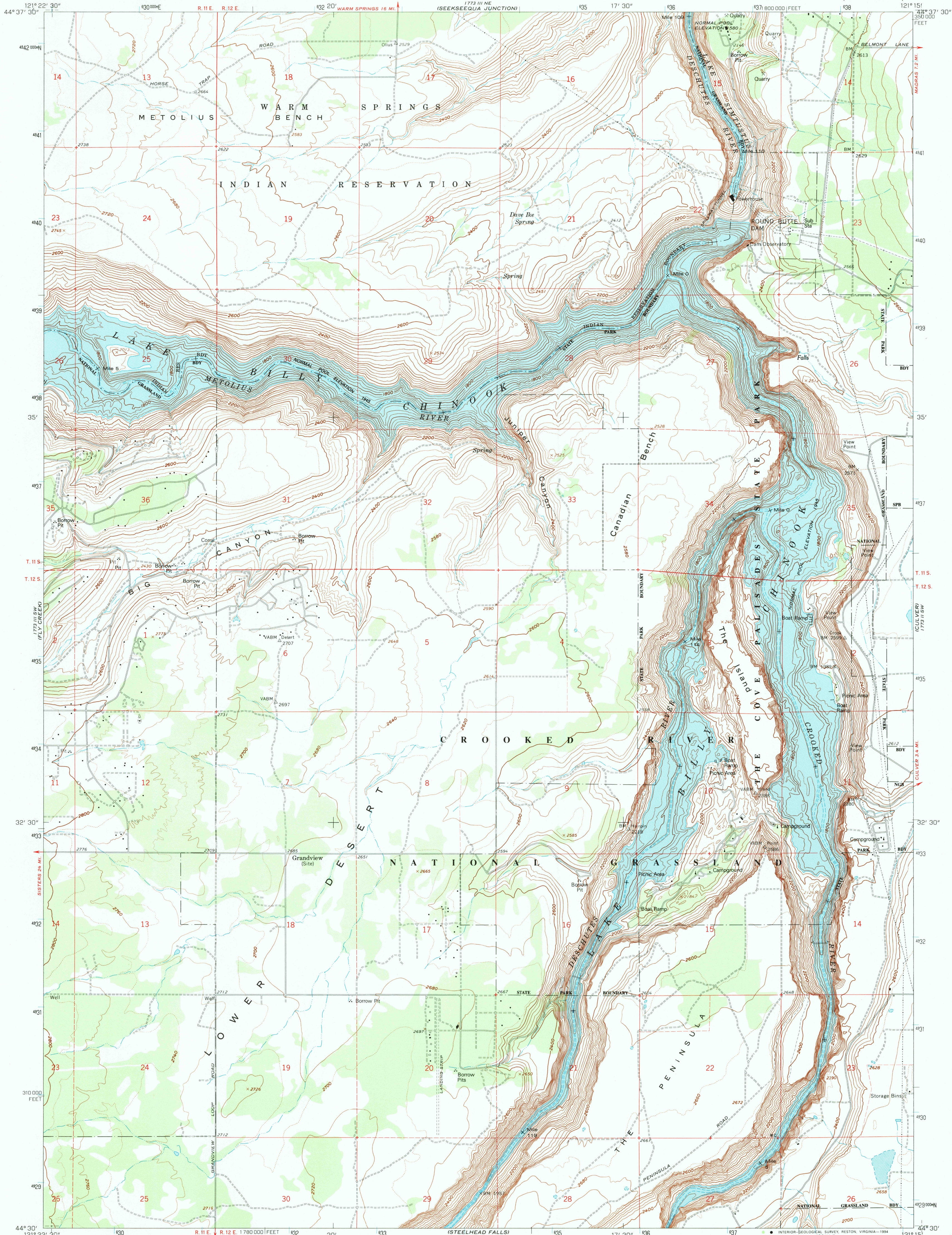


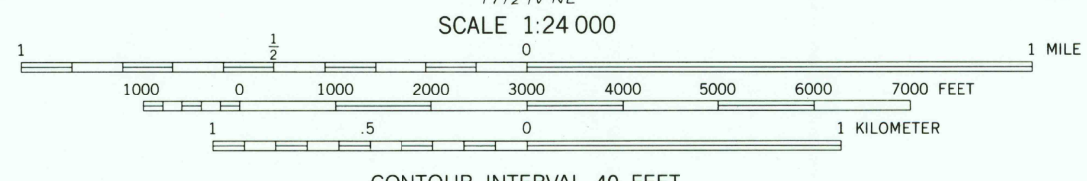
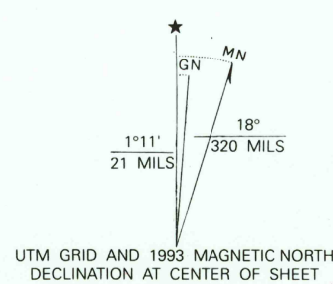
UNITED STATES  
DEPARTMENT OF THE INTERIOR  
GEOLOGICAL SURVEY

ROUND BUTTE DAM QUADRANGLE  
OREGON—JEFFERSON CO.  
7.5 MINUTE SERIES (TOPOGRAPHIC)



Produced by the United States Geological Survey  
Revised in cooperation with U.S. Forest Service  
Control by USGS and NOS/NOAA  
Compiled from aerial photographs taken 1957. Field checked 1962  
Revised from aerial photographs taken 1982. Limited field check 1985  
Map edited 1985

1927 North American Datum (NAD 27). Projection and  
10,000-foot ticks: Oregon Coordinate System, north zone  
(Lambert Conformal Conic)  
Blue 1000-meter Universal Transverse Mercator ticks, zone 10  
North American Datum of 1983 (NAD 83) is shown by dashed  
corner ticks. The values of the shift between NAD 27 and NAD 83  
for 7.5-minute intersections are given in USGS Bulletin 1875  
There may be private inholdings within the boundaries of the  
National or State reservations shown on this map  
Photorevised from 1991 source; no major culture or drainage  
changes observed. Boundaries and names revised 1993



CONTOUR INTERVAL 40 FEET  
SUPPLEMENTARY CONTOUR INTERVAL 20 FEET  
NATIONAL GEODETIC VERTICAL DATUM OF 1929

THIS MAP COMPLIES WITH NATIONAL MAP ACCURACY STANDARDS  
FOR SALE BY U.S. GEOLOGICAL SURVEY  
DENVER, COLORADO 80225, OR RESTON, VIRGINIA 22092  
A FOLDER DESCRIBING TOPOGRAPHIC MAPS AND SYMBOLS IS AVAILABLE ON REQUEST



ROAD CLASSIFICATION  
Primary highway, hard surface ——— Light-duty road, hard or improved surface ———  
Secondary highway, hard surface ——— Unimproved road ———  
Interstate Route ——— U. S. Route ——— State Route ———

ROUND BUTTE DAM, OREG.  
44121-E3-TF-024

1985  
MINOR REVISION 1993  
DMA 1773 III SE-SERIES V892

