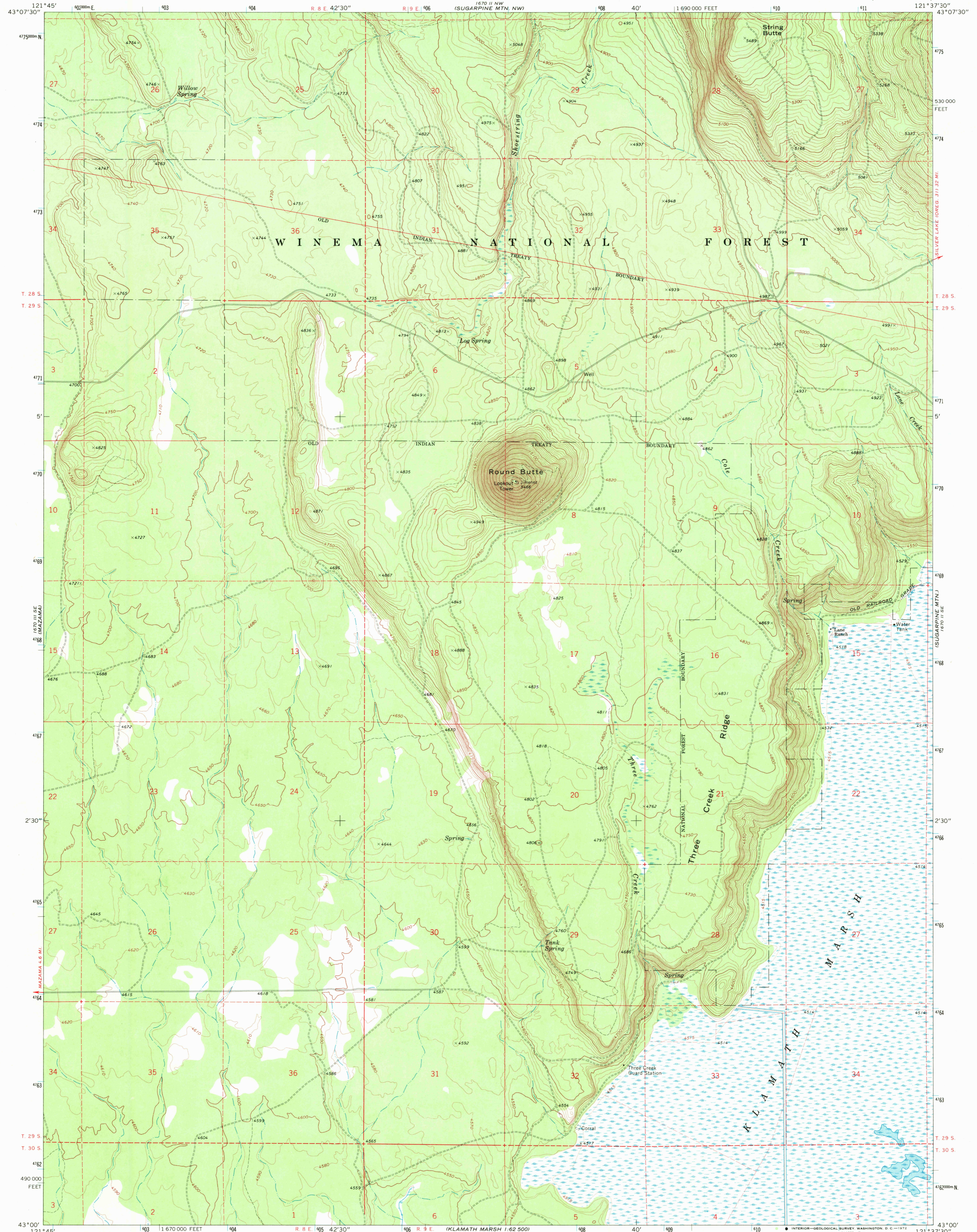


121°45' 43°07'30"

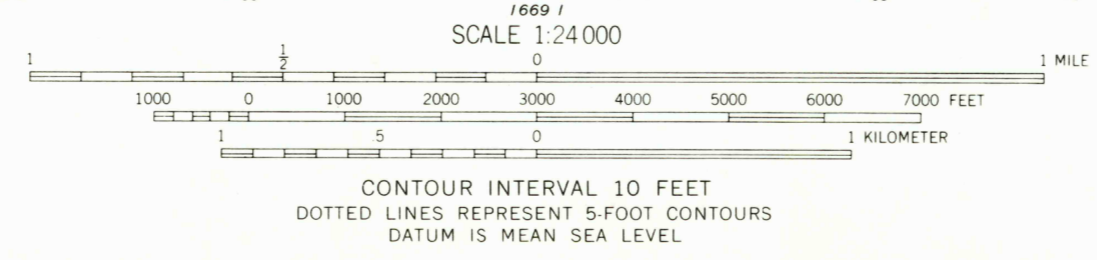
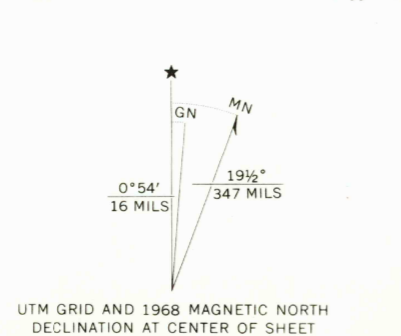
UNITED STATES DEPARTMENT OF THE INTERIOR GEOLOGICAL SURVEY

ROUND BUTTE QUADRANGLE OREGON-KLAMATH CO. 7.5 MINUTE SERIES (TOPOGRAPHIC)

121°37'30" 43°07'30"



Mapped, edited, and published by the Geological Survey Control by USGS and USC&GS Topography by photogrammetric methods from aerial photographs taken 1967. Field checked 1968 Polyconic projection. 1927 North American datum 10,000-foot grid based on Oregon coordinate system, south zone 1000-meter Universal Transverse Mercator grid ticks, zone 10, shown in blue Fine red dashed lines indicate selected fence lines



ROAD CLASSIFICATION Light-duty road, all weather, Unimproved road, fair or dry improved surface weather

THIS MAP COMPLIES WITH NATIONAL MAP ACCURACY STANDARDS FOR SALE BY U.S. GEOLOGICAL SURVEY, DENVER, COLORADO 80225, OR WASHINGTON, D.C. 20242 A FOLDER DESCRIBING TOPOGRAPHIC MAPS AND SYMBOLS IS AVAILABLE ON REQUEST

ROUND BUTTE, OREG. N4300-W12137.5/7.5

1968 AMS 1670 II SW-SERIES V892

FEB 1 1972 USGS HISTORICAL FILE TOPOGRAPHIC DIVISION