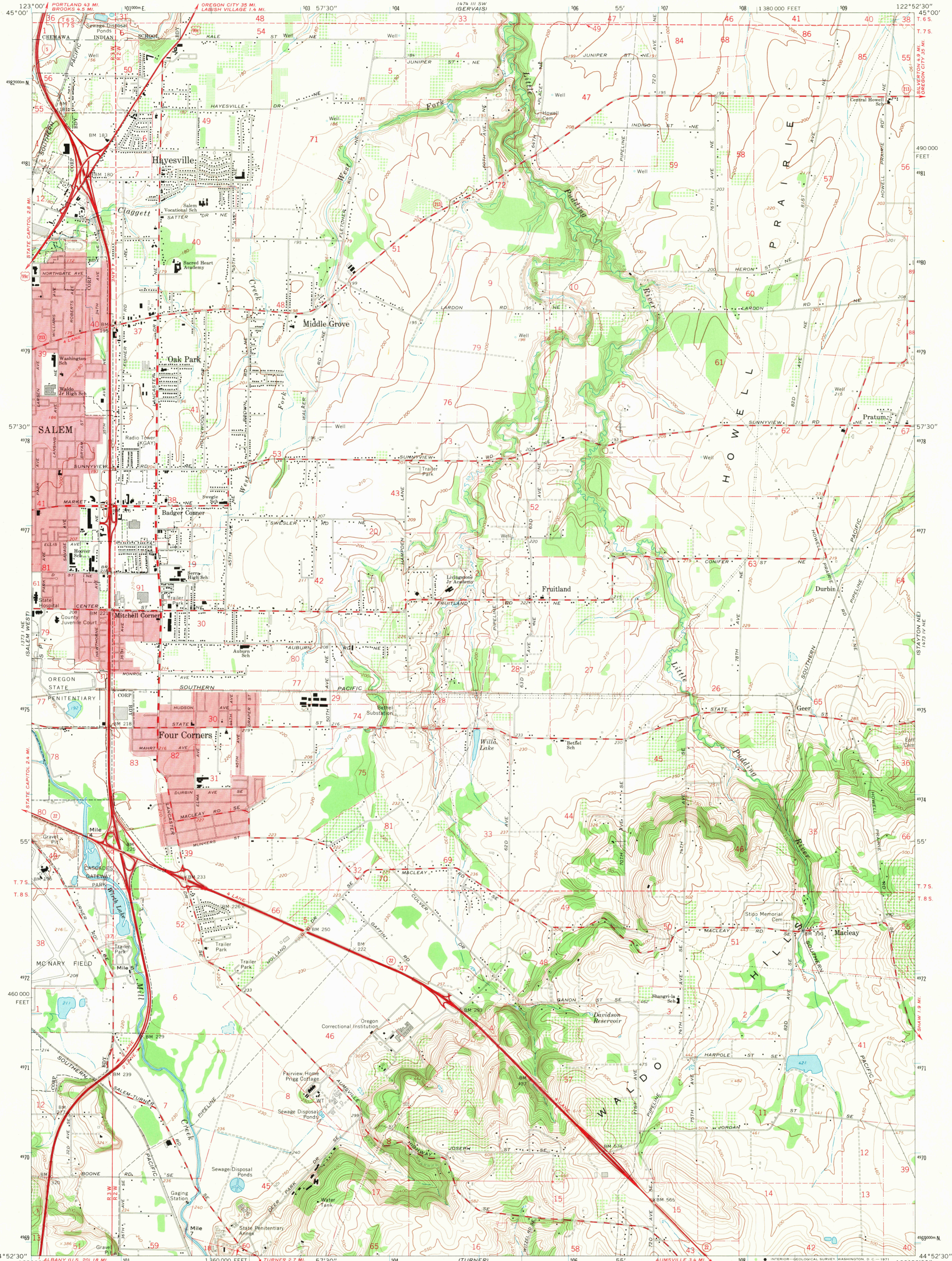


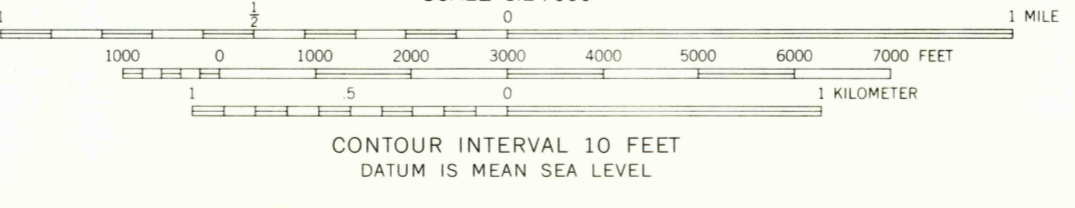
UNITED STATES  
DEPARTMENT OF THE INTERIOR  
GEOLOGICAL SURVEY

SALEM EAST QUADRANGLE  
OREGON—MARION CO.  
7.5 MINUTE SERIES (TOPOGRAPHIC)  
NW/4 STAYTON 15' QUADRANGLE



Mapped, edited, and published by the Geological Survey

Control by USGS, USC&GS, and State of Oregon  
Topography by photogrammetric methods from aerial photographs taken 1967. Field checked 1969  
Polyconic projection. 1927 North American datum  
10,000-foot grid based on Oregon coordinate system, north zone  
1000-meter Universal Transverse Mercator grid ticks, zone 10, shown in blue  
Red tint indicates areas in which only landmark buildings are shown  
Fine red dashed lines indicate selected fence lines

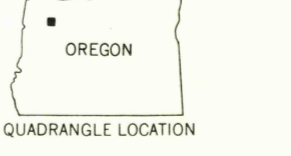


USGS  
Historic  
Topographic Division

ROAD CLASSIFICATION

|  |  |
|--|--|
| Primary highway, all weather, hard surface   | Light-duty road, all weather, improved surface |
| Secondary highway, all weather, hard surface | Unimproved road, fair or dry weather           |

   Interstate Route   
    U. S. Route   
    State Route



THIS MAP COMPLIES WITH NATIONAL MAP ACCURACY STANDARDS  
FOR SALE BY U. S. GEOLOGICAL SURVEY, DENVER, COLORADO 80225, OR WASHINGTON, D. C. 20242  
A FOLDER DESCRIBING TOPOGRAPHIC MAPS AND SYMBOLS IS AVAILABLE ON REQUEST

SALEM EAST, OREG.  
NW/4 STAYTON 15' QUADRANGLE  
N4452.5—W12252.5/7.5

1969  
AMS 1473 IV NW—SERIES V892  
HISTORICAL  
U.S.G.S.  
FILE COPY  
TOPOGRAPHIC DIVISION

JUL 26 1971