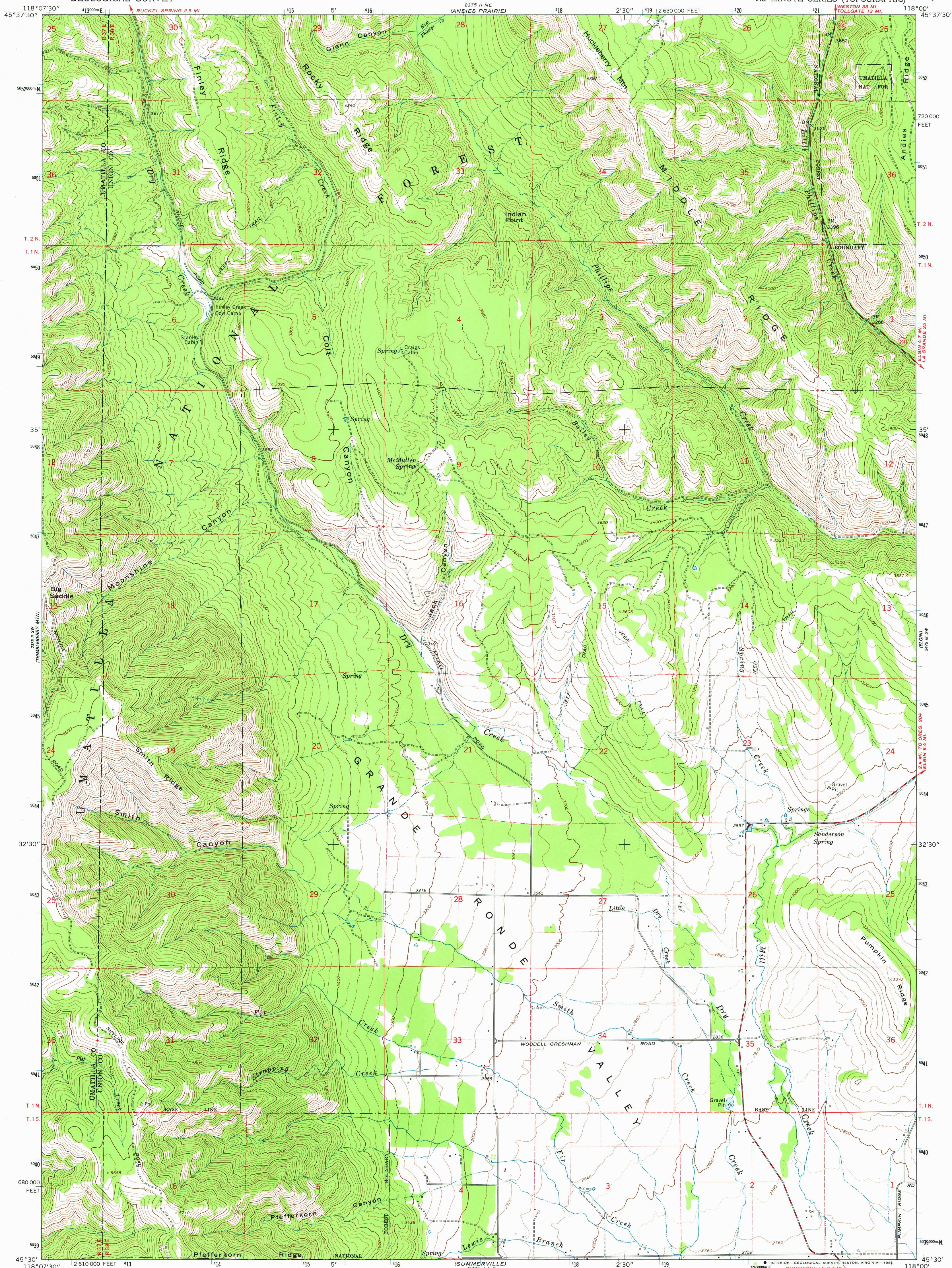


UNITED STATES
DEPARTMENT OF THE INTERIOR
GEOLOGICAL SURVEY

SANDERSON SPRING QUADRANGLE
OREGON
7.5 MINUTE SERIES (TOPOGRAPHIC)



Mapped, edited, and published by the Geological Survey
Control by USGS, USC&GS, and State of Oregon

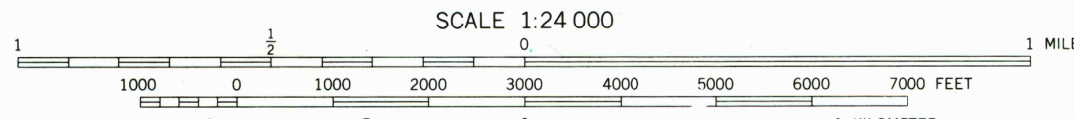
Topography by photogrammetric methods from aerial
photographs taken 1957. Field checked 1963

Polyconic projection. 1927 North American datum
10,000-foot grid based on Oregon coordinate system, north zone
1000-meter Universal Transverse Mercator grid ticks,
zone 11, shown in blue

To place on the predicted North American Datum 1983
move the projection lines 18 meters north and
81 meters east as shown by dashed corner ticks

Fine red dashed lines indicate selected fence lines
Where omitted, land lines have not been established

There may be private inholdings within the boundaries of
the National or State reservations shown on this map



CONTOUR INTERVAL 40 FEET
DOTTED LINES REPRESENT 20-FOOT CONTOURS
NATIONAL GEODETIC VERTICAL DATUM OF 1929

THIS MAP COMPLIES WITH NATIONAL MAP ACCURACY STANDARDS
FOR SALE BY U. S. GEOLOGICAL SURVEY, DENVER, COLORADO 80225, OR RESTON, VIRGINIA 22092
A FOLDER DESCRIBING TOPOGRAPHIC MAPS AND SYMBOLS IS AVAILABLE ON REQUEST

ROAD CLASSIFICATION
Medium-duty ——— Light-duty ———
Unimproved dirt ——— State Route —○—



SANDERSON SPRING, OREG.
N4530-W11800/7.5

1963

DMA 2375 II SE-SERIES V892

RETURN TO:
USGS AND HISTORICAL MAP ARCHIVES

JUL 23 1982

1100