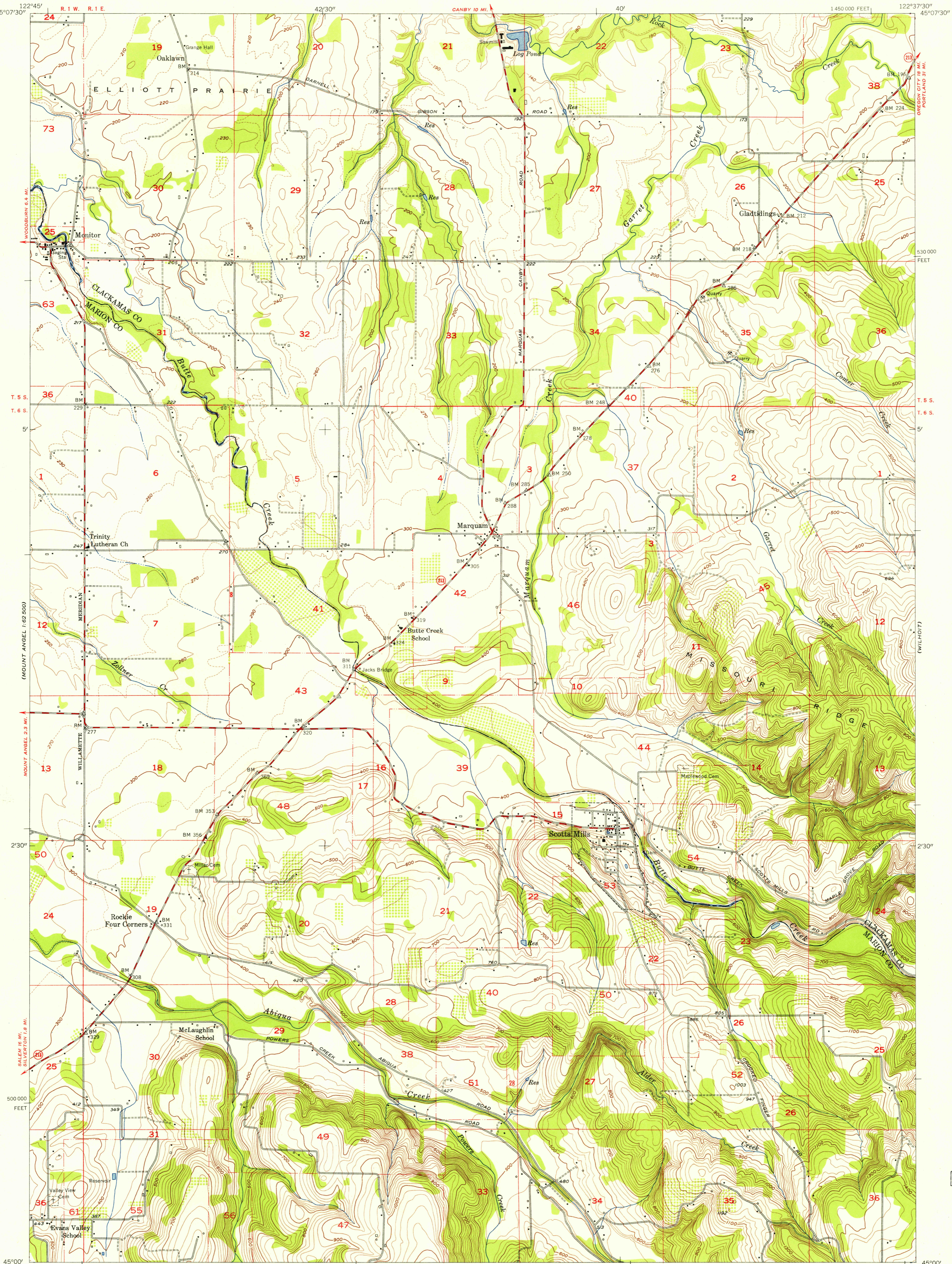
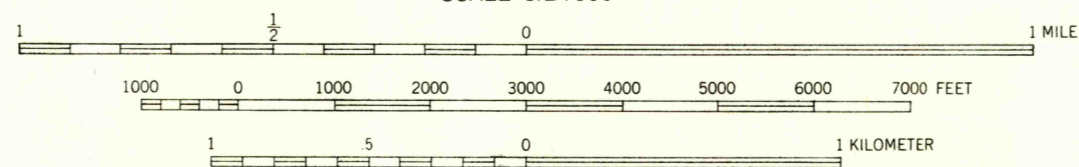
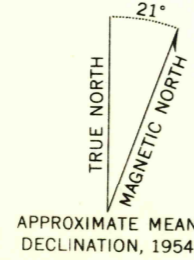


U.S.G.S.  
FILE COPY  
TOPOGRAPHIC DIVISION



Mapped, edited, and published by the Geological Survey  
Control by USGS, USC&GS, USCE, and Oregon State Highway Department  
Topography from aerial photographs by photogrammetric methods  
Aerial photographs taken 1953. Field check 1954  
Polyconic projection, 1927 North American datum  
10,000-foot grid based on Oregon coordinate system, north zone



CONTOUR INTERVAL 20 FEET  
DASHED LINES REPRESENT HALF INTERVAL CONTOURS  
DATUM IS MEAN SEA LEVEL

USGS  
Historical File  
Topographic Division

ROAD CLASSIFICATION

|             |                 |
|-------------|-----------------|
| Heavy-duty  | Light-duty      |
| Medium-duty | Unimproved dirt |
| U. S. Route | State Route     |



SCOTT'S MILLS, OREG.  
SW/4 MOLALLA 15' QUADRANGLE  
N 4500—W 12237.5/7.5

1954

THIS MAP COMPLIES WITH NATIONAL MAP ACCURACY STANDARDS  
FOR SALE BY U. S. GEOLOGICAL SURVEY, FEDERAL CENTER, DENVER, COLORADO OR WASHINGTON 25, D. C.  
A FOLDER DESCRIBING TOPOGRAPHIC MAPS AND SYMBOLS IS AVAILABLE ON REQUEST

FEB 1 1954

2650