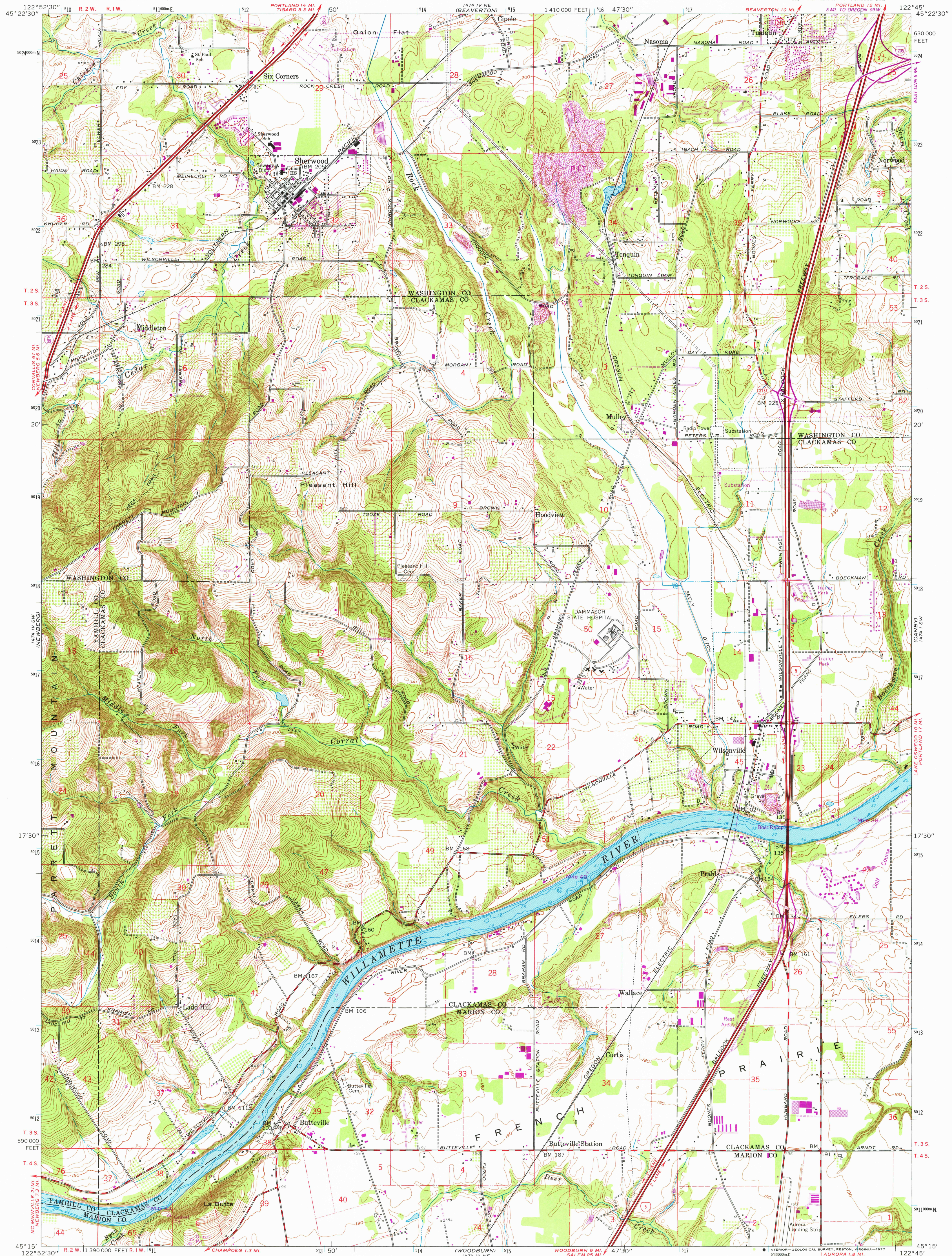


UNITED STATES
DEPARTMENT OF THE INTERIOR
GEOLOGICAL SURVEY

SHERWOOD QUADRANGLE
OREGON
7.5 MINUTE SERIES (TOPOGRAPHIC)
SE/4 BEAVERTON 15' QUADRANGLE



Mapped, edited, and published by the Geological Survey

Control by USGS, NOS/NOAA, USCE, and State of Oregon

Topography by photogrammetric methods from aerial

photographs taken 1952. Field check 1954.

Revised from aerial photographs taken 1960. Field check 1961

Selected hydrographic data compiled from NOS/NOAA Chart 6172 (1958)

This information not intended for navigational purposes

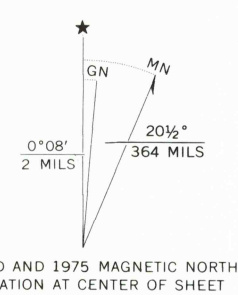
Projection and 10,000-foot grid ticks: Oregon coordinate

system, north zone (Lambert conformal conic)

1000-meter Universal Transverse Mercator grid ticks,

zone 10, shown in blue. 1927 North American datum

Fine red dashed lines indicate selected fencelines



CONTOUR INTERVAL 10 FEET
NATIONAL GEODETIC VERTICAL DATUM OF 1929
DEPTH CURVES AND SOUNDINGS IN FEET—WILLAMETTE RIVER DATUM



ROAD CLASSIFICATION
Heavy-duty ——— Light-duty ———
Medium-duty ——— Unimproved dirt ———
Interstate Route ——— U.S. Route ——— State Route ———

USGS
Historical File
Topographic Division

SHERWOOD, OREG.
SE/4 BEAVERTON 15' QUADRANGLE
N4515—W12245/7.5

JUN 22 1978

THIS MAP COMPLIES WITH NATIONAL MAP ACCURACY STANDARDS
FOR SALE BY U.S. GEOLOGICAL SURVEY, DENVER, COLORADO 80225, OR RESTON, VIRGINIA 22092
A FOLDER DESCRIBING TOPOGRAPHIC MAPS AND SYMBOLS IS AVAILABLE ON REQUEST

Revisions shown in purple compiled by the Geological Survey from aerial
photographs taken 1970 and 1975. This information not field checked

1961
PHOTOREVISED 1970 and 1975
AMS 1474 IV SE—SERIES V892