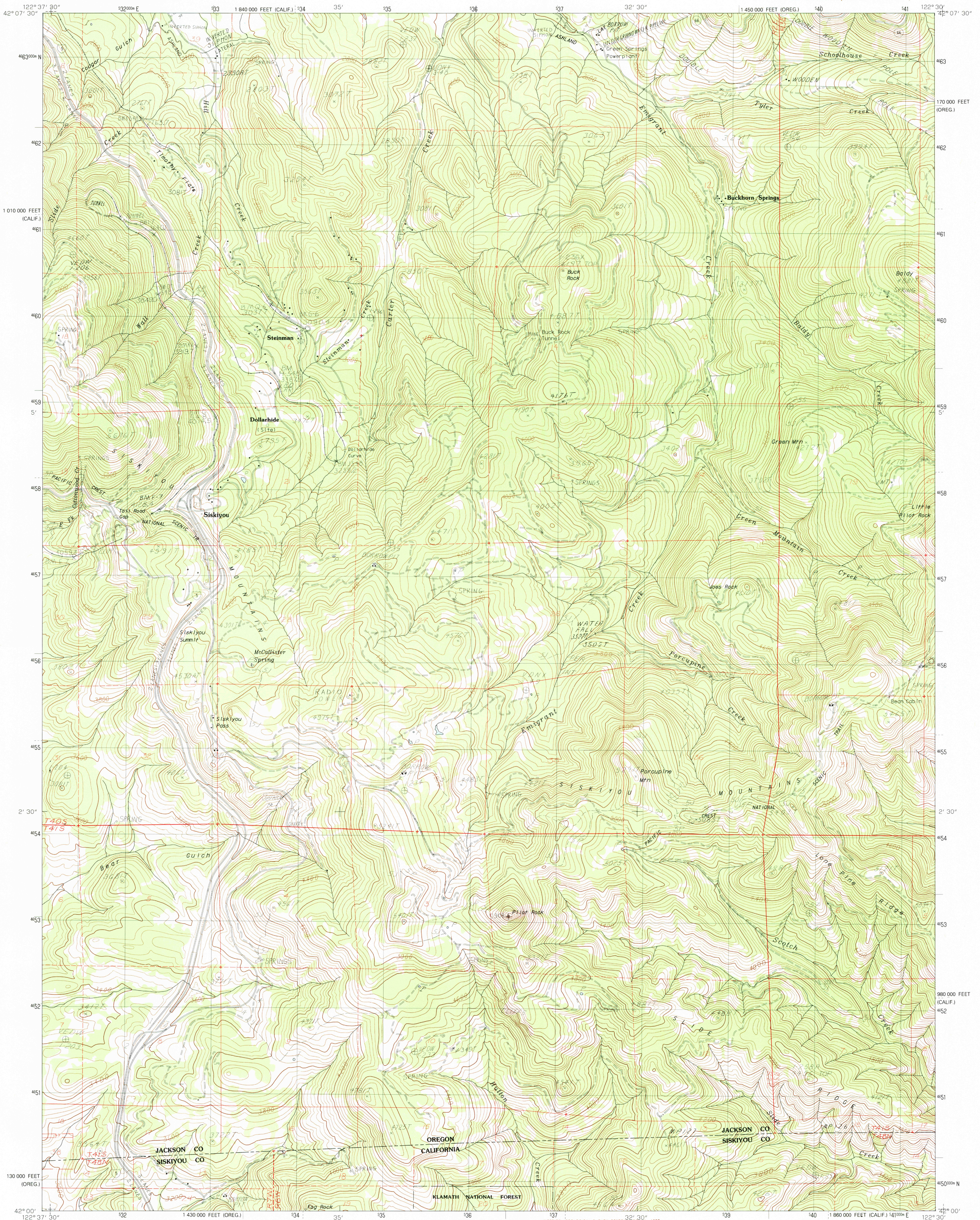


UNITED STATES
DEPARTMENT OF THE INTERIOR
GEOLOGICAL SURVEY

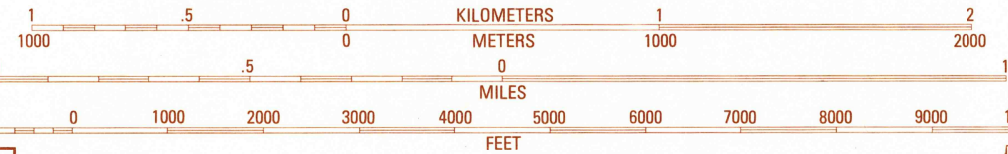
SISKIYOU PASS QUADRANGLE
OREGON—CALIFORNIA
7.5 MINUTE SERIES (TOPOGRAPHIC)



PRODUCED BY THE UNITED STATES GEOLOGICAL SURVEY
CONTROL BY USGS, NOS/NOAA
COMPILED FROM AERIAL PHOTOGRAPHS TAKEN 1976
FIELD CHECKED 1978 MAP EDITED 1983
PROJECTION LAMBERT CONFORMAL CONIC
GRID: 1000-METER UNIVERSAL TRANSVERSE MERCATOR...ZONE 10
10,000-FOOT STATE GRID TICS...OREG. S ZONE & CALIF. ZONE 10
UTM GRID DECLINATION 1983
1980 MAGNETIC NORTH DECLINATION 1800 EAST
VERTICAL DATUM NATIONAL GEODETIC VERTICAL DATUM OF 1929
HORIZONTAL DATUM 1927 NORTH AMERICAN DATUM
To place on the predicted North American Datum of 1983,
move the projection lines as shown by dashed corner ticks
(19 meters north/95 meters east)
There may be private inholdings within the boundaries of any
Federal and State Reservations shown on this map

PROVISIONAL MAP
Produced from original
manuscript drawings. Infor-
mation shown as of date of
field check.

SCALE 1:24 000



CONTOUR INTERVAL 40 FEET
To convert meters to feet multiply by 3.2808
To convert feet to meters multiply by 0.3048



1	2	3	4	5	6	7	8
1	2	3	4	5	6	7	8

ROAD LEGEND
Improved Road.....
Unimproved Road.....
Trail.....
○ Interstate Route ○ U.S. Route ○ State Route

SISKIYOU PASS, OREG.—CALIF.
PROVISIONAL EDITION 1983

THIS MAP COMPLIES WITH NATIONAL MAP ACCURACY STANDARDS
FOR SALE BY U. S. GEOLOGICAL SURVEY, DENVER, COLORADO 80225, OR RESTON, VIRGINIA 22092

42122-A5-TF-024

