

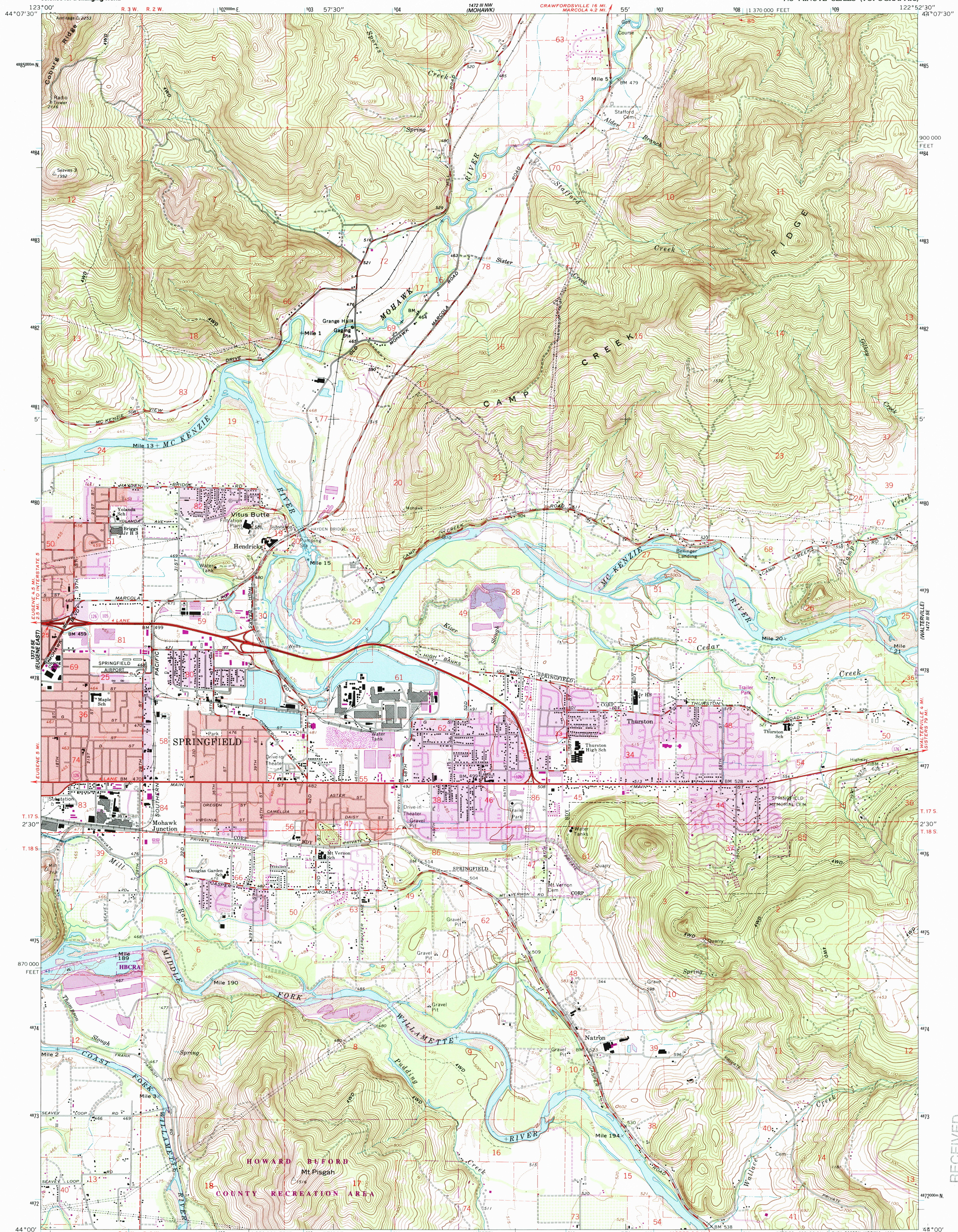
122° 11' W (COORS)



U.S. DEPARTMENT OF THE INTERIOR  
U.S. GEOLOGICAL SURVEY

SPRINGFIELD QUADRANGLE  
OREGON-LANE CO.  
7.5 MINUTE SERIES (TOPOGRAPHIC)

122° 11' W (MARCOLA)



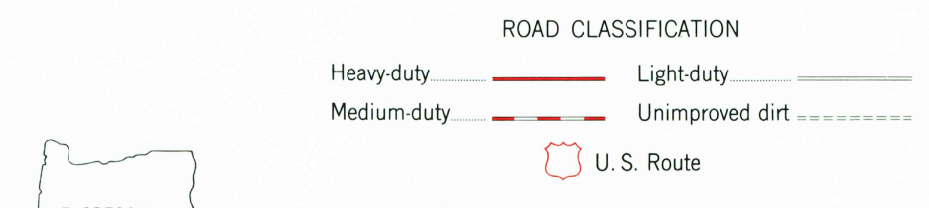
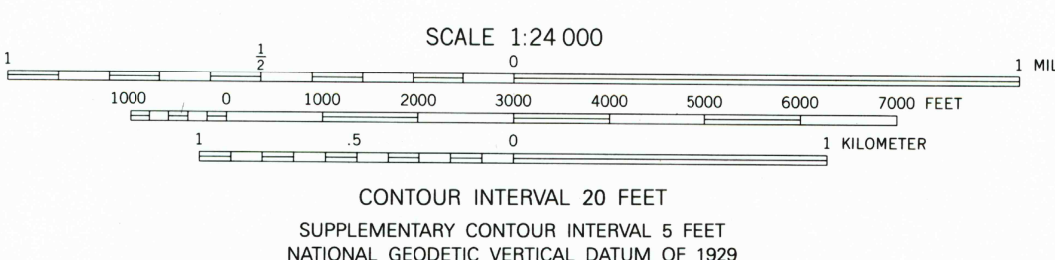
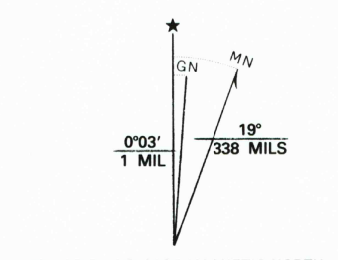
Mapped, edited, and published by the Geological Survey  
Control by USGS, NOS/NOAA, and State of Oregon

Topography by photogrammetric methods from aerial photographs  
taken 1965. Field checked 1967

Polyconic projection. 1927 North American Datum  
10,000-foot grid based on Oregon coordinate system,  
south zone  
1000-meter Universal Transverse Mercator grid ticks, zone 10,  
shown in blue

The difference between 1927 North American Datum and North  
American Datum of 1983 (NAD 83) for 7.5 minute intersections is  
given in USGS Bulletin 1875. The NAD 83 is shown by dashed  
corner ticks

Red tint indicates area in which only landmark buildings are shown  
There may be private inholdings within the boundaries of  
the National or State reservations shown on this map



SPRINGFIELD, OREG.  
44122-AB-TF-024  
1967  
PHOTOREVISED 1986  
DMA 1472 III SW-SERIES V892

THIS MAP COMPLIES WITH NATIONAL MAP ACCURACY STANDARDS  
FOR SALE BY U.S. GEOLOGICAL SURVEY, P.O. BOX 25286, DENVER, COLORADO 80225  
A FOLDER DESCRIBING TOPOGRAPHIC MAPS AND SYMBOLS IS AVAILABLE ON REQUEST

Revisions shown in purple compiled from aerial  
photographs taken 1982 and other sources  
This information not field checked. Map edited 1986  
Purple tint indicates extension of urban areas

RECEIVED  
SEP 30 2000  
USGS WFO  
HISTORICAL MAP ARCHIVES

