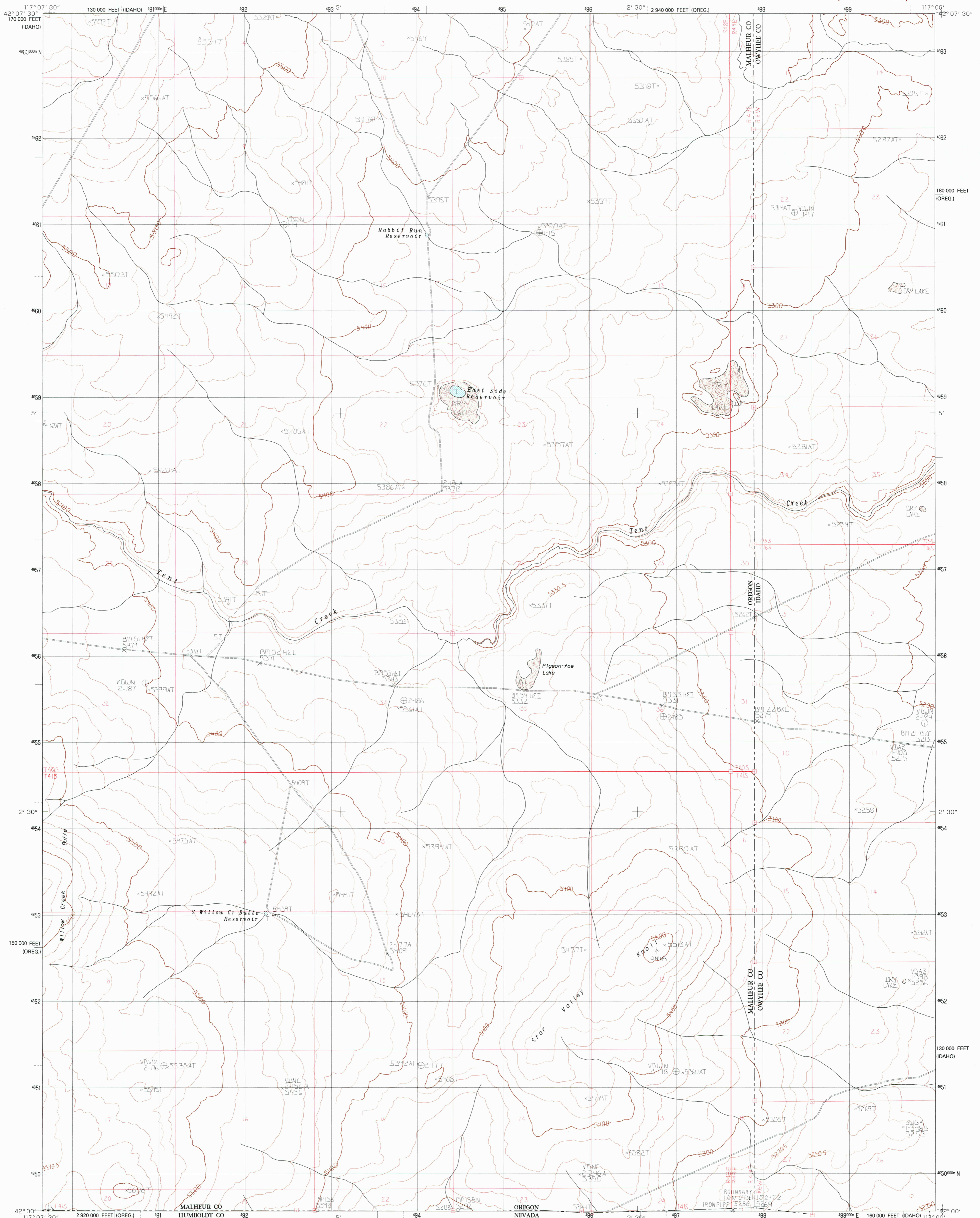


UNITED STATES  
DEPARTMENT OF THE INTERIOR  
GEOLOGICAL SURVEY

STAR VALLEY KNOLL QUADRANGLE  
OREGON—IDAHO—NEVADA  
7.5 MINUTE SERIES (TOPOGRAPHIC)

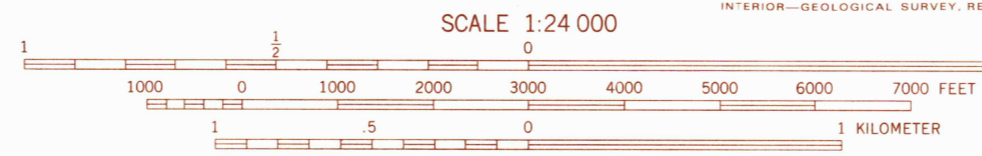


PRODUCED BY THE UNITED STATES GEOLOGICAL SURVEY  
CONTROL BY USGS, NOS/NOAA  
COMPILED FROM AERIAL PHOTOGRAPHS TAKEN 1975  
FIELD CHECKED 1979. MAP EDITED 1982  
PROJECTION LAMBERT CONFORMAL CONIC  
GRID: 1000-METER UNIVERSAL TRANSVERSE MERCATOR ZONE 11  
1800-FOOT STATE GRID TICS OREG. S ZONE & IDAHO, W ZONE  
UTM GRID DECLINATION 093° WEST  
1980 MAGNETIC NORTH DECLINATION 17° EAST  
VERTICAL DATUM NATIONAL GEODETIC VERTICAL DATUM OF 1929  
HORIZONTAL DATUM 1927 NORTH AMERICAN DATUM

To place on the predicted North American Datum of 1983,  
move the projection lines as shown by dashed corner ticks  
(15 meters north / 79 meters east)

There may be private inholdings within the boundaries of any  
Federal and State Reservations shown on this map  
Certain land lines are omitted because of insufficient data

**PROVISIONAL MAP**  
Produced from original  
manuscript drawings. Informa-  
tion shown as of date of  
field check.



CONTOUR INTERVAL 20 FEET  
SUPPLEMENTARY CONTOUR INTERVAL 10 FEET  
To convert meters to feet multiply by 3.2808  
To convert feet to meters multiply by 0.3048

1	2	3
4	5	6
7	8	

ADJOINING 7.5' QUADRANGLE NAMES

ROAD LEGEND

- Improved Road.....
- Unimproved Road.....
- Trail.....
- Interstate Route.....
- U.S. Route.....
- State Route.....

STAR VALLEY KNOLL, OREG.—IDAHO—NEV.  
PROVISIONAL EDITION 1982

42117-A1-TF-024

THIS MAP COMPLIES WITH NATIONAL MAP ACCURACY STANDARDS  
FOR SALE BY U.S. GEOLOGICAL SURVEY, DENVER, COLORADO 80225, OR RESTON, VIRGINIA 22092

RETURN TO:  
USGS AND HISTORICAL MAP ARCHIVES