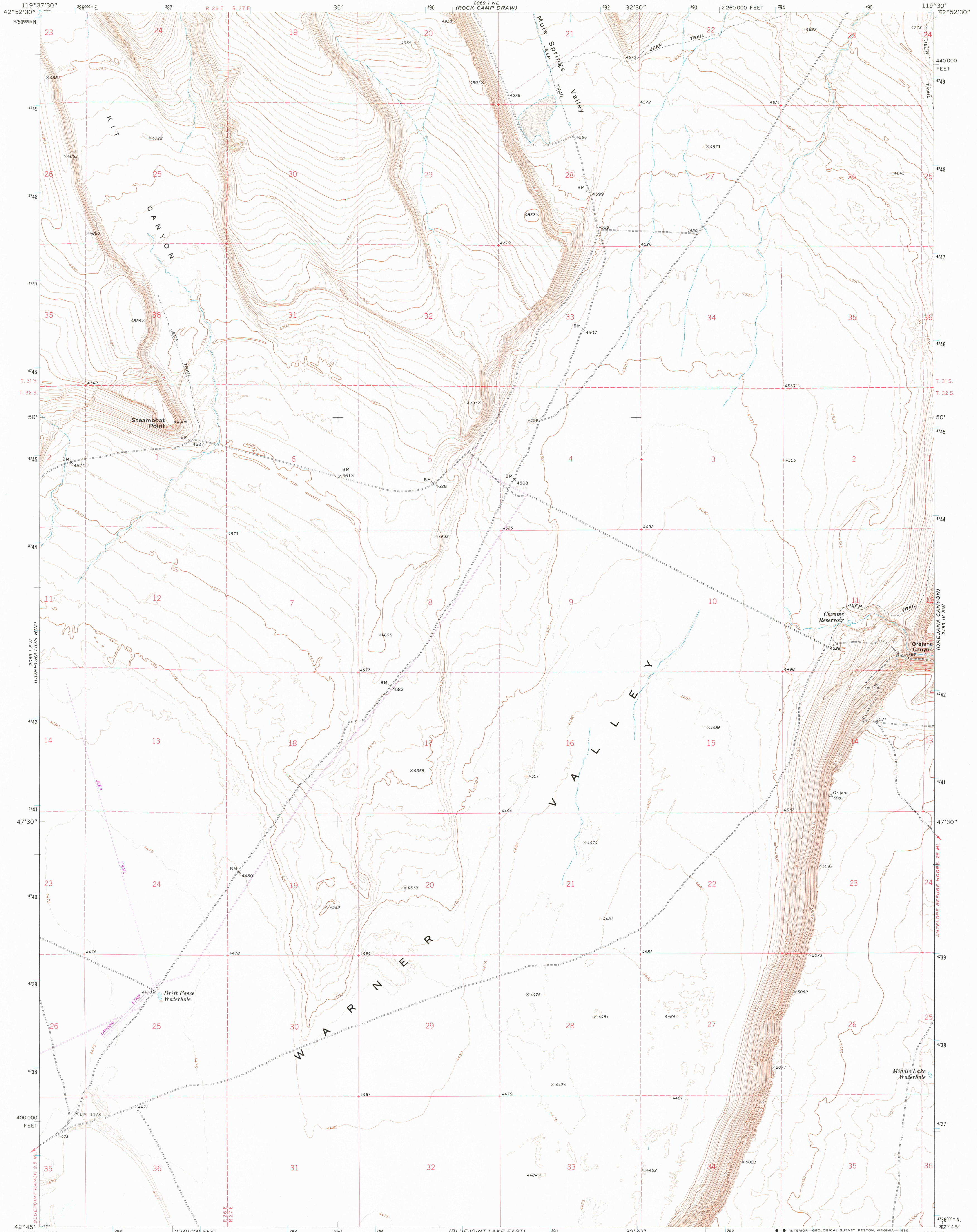
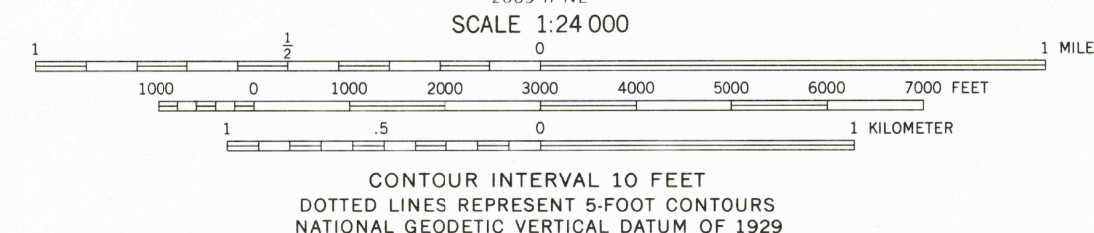
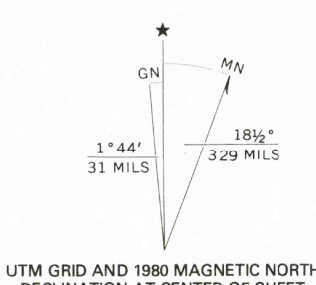


UNITED STATES
DEPARTMENT OF THE INTERIOR
GEOLOGICAL SURVEY

STEAMBOAT POINT QUADRANGLE
OREGON—HARNEY CO.
7.5 MINUTE SERIES (TOPOGRAPHIC)



Mapped, edited, and published by the Geological Survey
Control by USGS and NOS/NOAA
Topography by photogrammetric methods from aerial photographs taken 1969. Field checked 1971
Projection and 10,000-foot grid ticks: Oregon coordinate system, south zone (Lambert conformal conic) 1000-meter Universal Transverse Mercator grid ticks, zone 11, shown in blue. 1927 North American datum
To place on the predicted North American Datum 1983 move the projection lines 18 meters north and 86 meters east as shown by dashed corner ticks
Fine red dashed lines indicate selected fence lines



ROAD CLASSIFICATION
Primary highway, hard surface
Secondary highway, hard surface
Interstate Route
U. S. Route
State Route
Light-duty road, hard or improved surface
Unimproved road
Antelope Refuge Road, 2.5 mi.

THIS MAP COMPLIES WITH NATIONAL MAP ACCURACY STANDARDS
FOR SALE BY U. S. GEOLOGICAL SURVEY, DENVER, COLORADO 80225 OR RESTON, VIRGINIA 22092
A FOLDER DESCRIBING TOPOGRAPHIC MAPS AND SYMBOLS IS AVAILABLE ON REQUEST

Revisions shown in purple compiled from aerial photographs taken 1979 and other source data. This information not field checked. Map edited 1980

STEAMBOAT POINT, OREG.
N4245-W11930/7.5
1971
PHOTOREVISED 1980
DMA 2089 I SE—SERIES V892

JAN 29 1981
2100