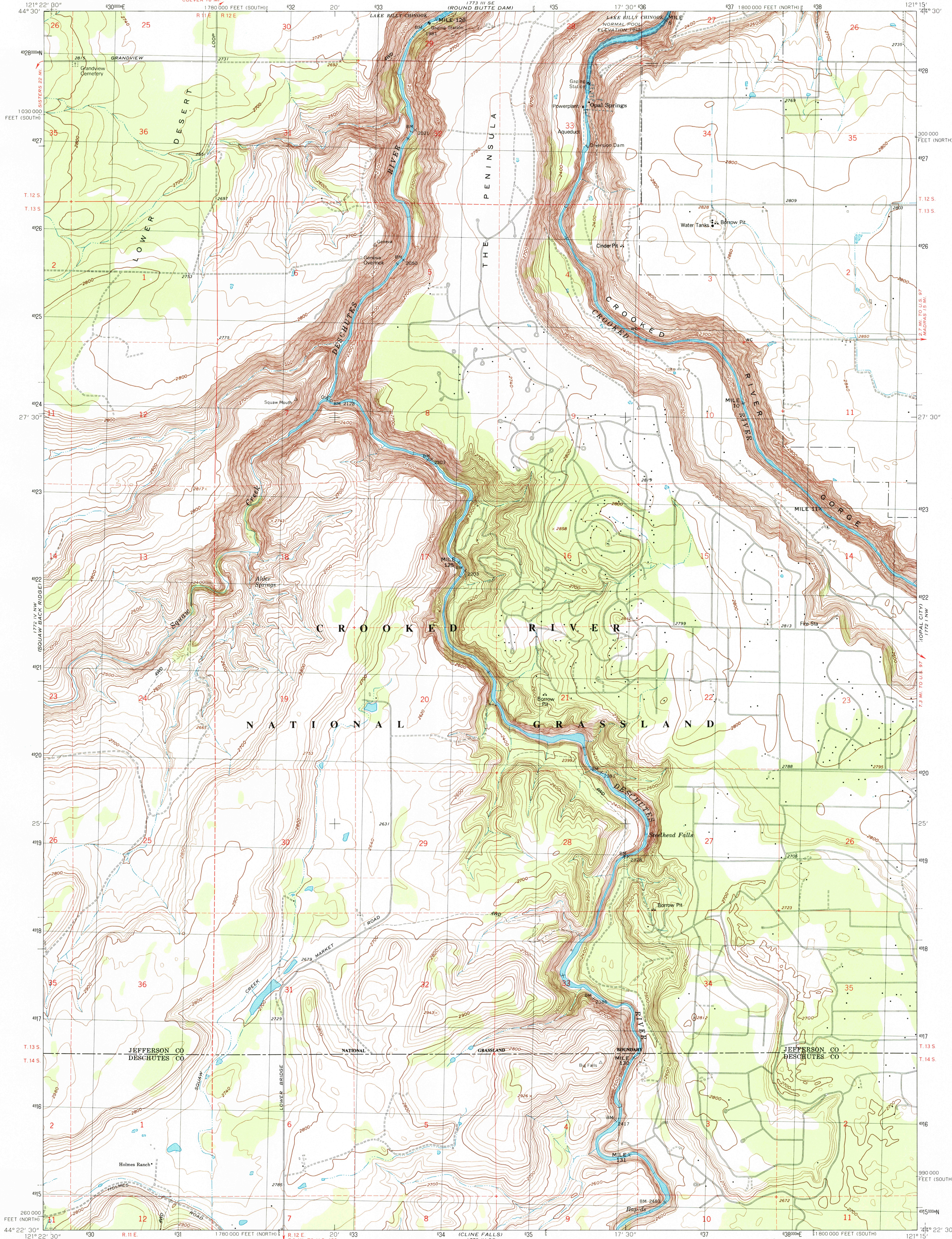
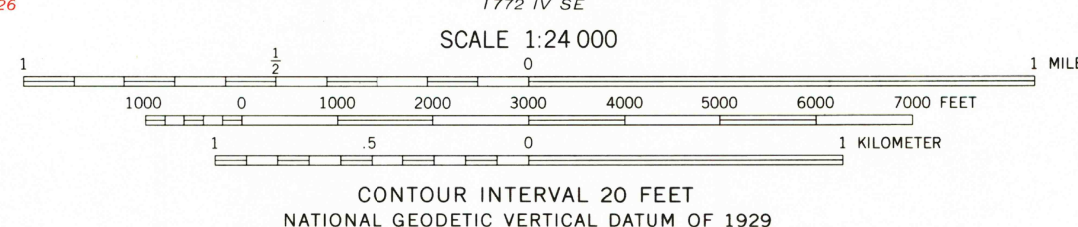
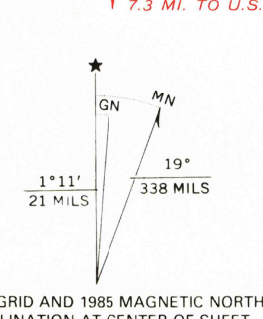


UNITED STATES  
DEPARTMENT OF THE INTERIOR  
GEOLOGICAL SURVEY

STEELHEAD FALLS QUADRANGLE  
OREGON  
7.5 MINUTE SERIES (TOPOGRAPHIC)



Mapped, edited, and published by the Geological Survey  
Revised in cooperation with U.S. Forest Service  
Control by USGS and NOS/NOAA  
Topography by photogrammetric methods from aerial  
photographs taken 1957. Field checked 1962  
Revised from aerial photographs taken 1982. Limited  
field check 1985. Map edited 1985.  
Projection and 10,000-foot grid ticks: Oregon coordinate  
system, north zone and south zone (Lambert conformal conic)  
1000-meter Universal Transverse Mercator grid, zone 10  
1927 North American datum. To place on the predicted  
North American Datum 1983 move the projection lines 21  
meters north and 92 meters east as shown by dashed corner ticks  
There may be private inholdings within the boundaries of  
the National or State reservations shown on this map



ROAD CLASSIFICATION  
Light-duty ————— Unimproved dirt —————

STEELHEAD FALLS, OREG.  
44121-D3-TF-024

1985  
DMA 1772 IV NE—SERIES V892

