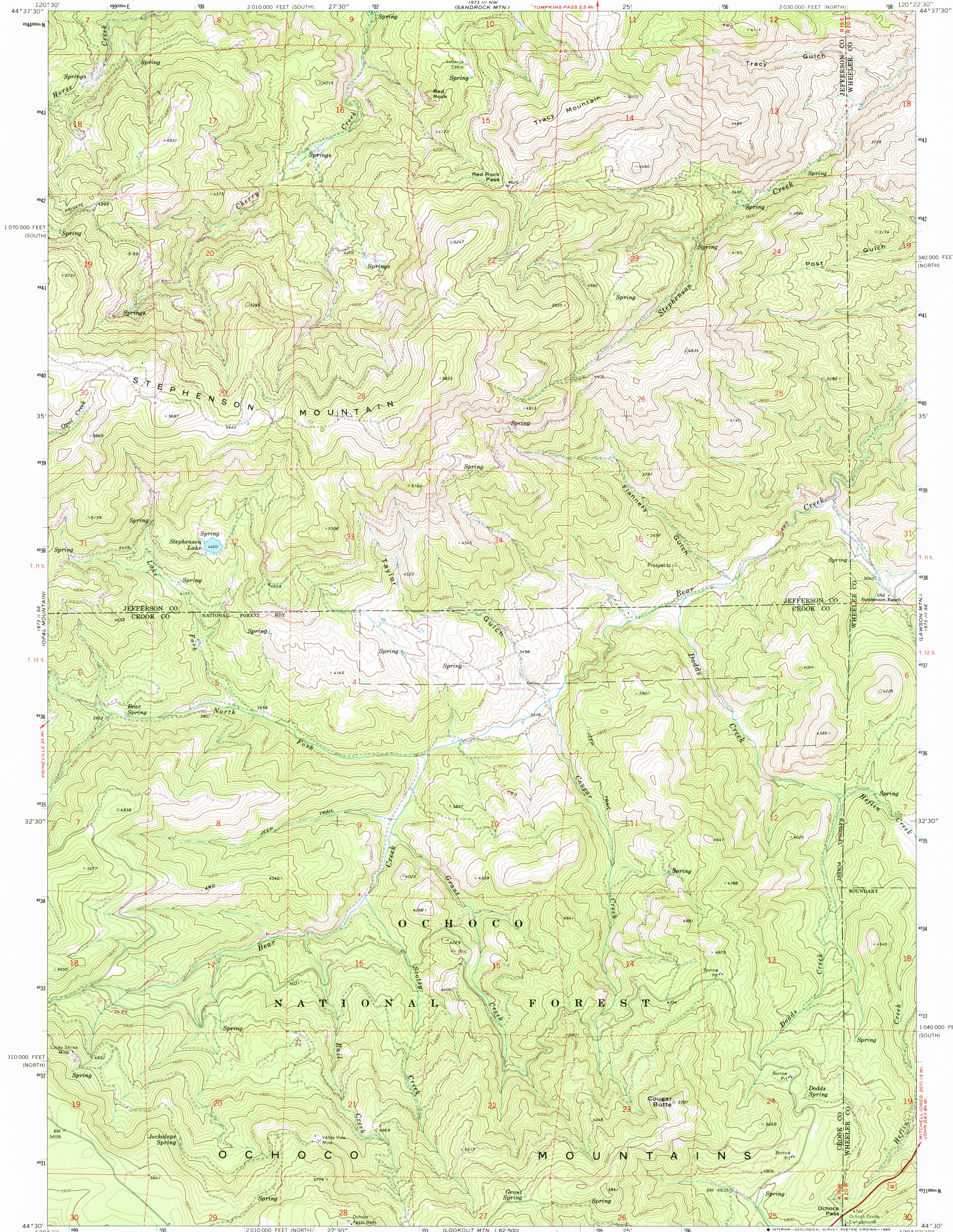


UNITED STATES
DEPARTMENT OF THE INTERIOR
GEOLOGICAL SURVEY

STEPHENSON MTN. QUADRANGLE
OREGON
7.5 MINUTE SERIES (TOPOGRAPHIC)



Mapped, edited, and published by the Geological Survey

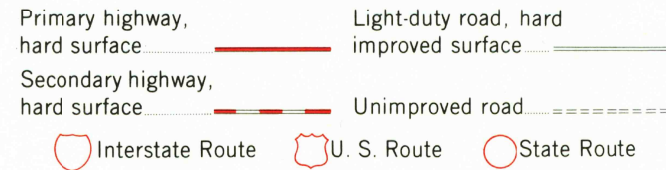
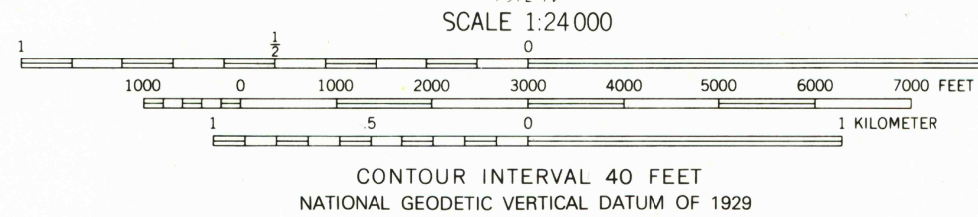
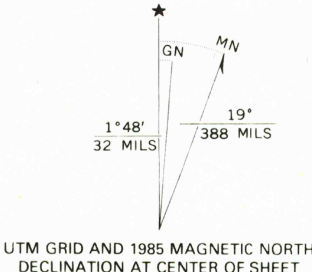
Control by USGS and NOS/NOAA

Topography by photogrammetric methods from aerial photographs taken 1967. Field checked 1968

Polyconic projection. 1927 North American datum, 10,000-foot grids based on Oregon coordinate system, north and south zones

1000-meter Universal Transverse Mercator grid ticks, zone 10, shown in blue

To place on the predicted North American Datum 1983 move the projection lines 20 meters north and 86 meters east as shown by dashed corner ticks. There may be private inholdings within the boundaries of the National or State reservations shown on this map.



STEPHENSON MTN., OREG.

44120-E4-TF-024
PHOTOREVISED 1985
1968

DMA 1973 III SW-SERIES V892

THIS MAP COMPLIES WITH NATIONAL MAP ACCURACY STANDARDS
FOR SALE BY U. S. GEOLOGICAL SURVEY, DENVER, COLORADO 80225, OR RESTON, VIRGINIA 22092
A FOLDER DESCRIBING TOPOGRAPHIC MAPS AND SYMBOLS IS AVAILABLE ON REQUEST

Revision shown in purple compiled by Geological Survey
from aerial photographs taken 1982. Partial field check
by U. S. Forest Service. Map edited 1985