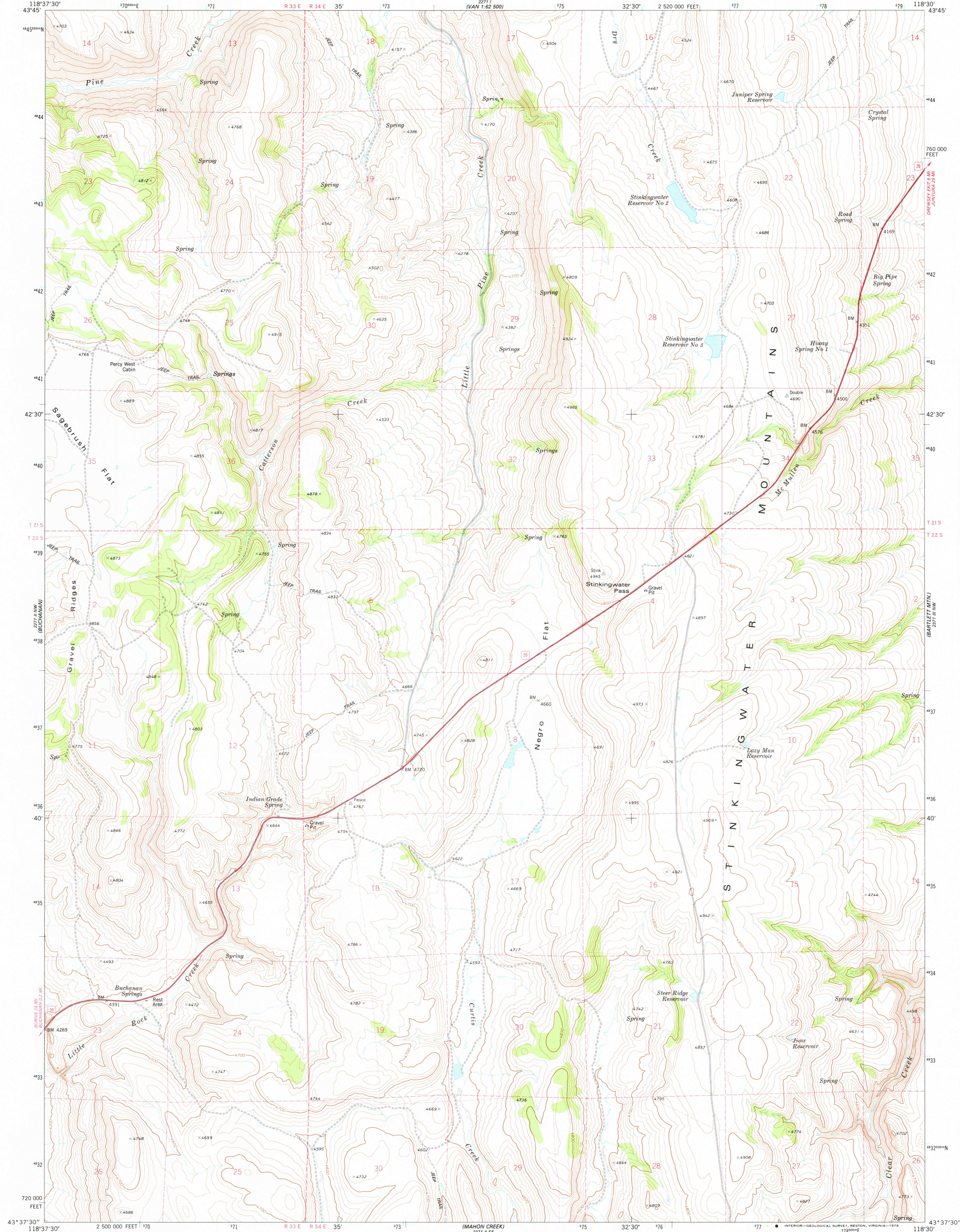
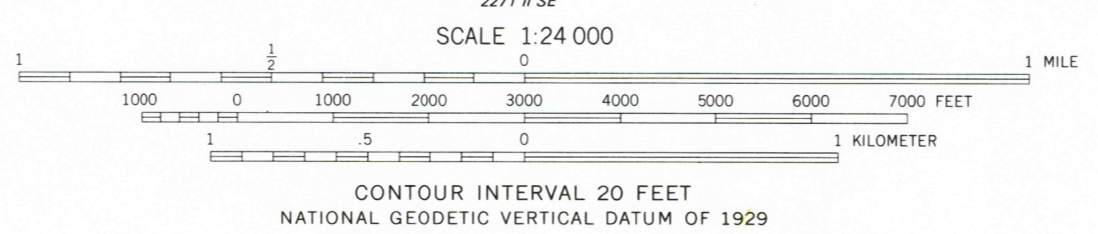
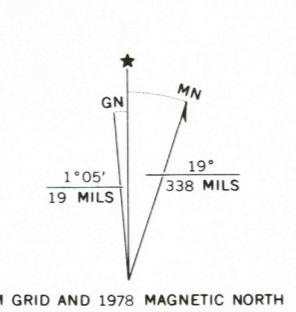


2271 I
NAN 1:62 500

2271 II
ORESET 1:62 500



Mapped, edited, and published by the Geological Survey
Control by USGS and NOS/NOAA
Topography by photogrammetric methods from aerial
photographs taken 1972. Field checked 1973. Map edited 1978
Projection and 10,000-foot grid ticks: Oregon coordinate
system, south zone (Lambert conformal conic).
1000-meter Universal Transverse Mercator grid ticks,
zone 11, shown in blue. 1927 North American datum
Fine red dashed lines indicate selected fence lines



ROAD CLASSIFICATION
Primary highway, hard surface ———— Light-duty road, hard or improved surface
Secondary highway, hard surface ———— Improved road
Unimproved road ————
Interstate Route U.S. Route State Route

THIS MAP COMPLIES WITH NATIONAL MAP ACCURACY STANDARDS
FOR SALE BY U.S. GEOLOGICAL SURVEY, DENVER, COLORADO 80225, OR RESTON, VIRGINIA 22092
A FOLDER DESCRIBING TOPOGRAPHIC MAPS AND SYMBOLS IS AVAILABLE ON REQUEST

USGS STINKINGWATER PASS, OREG.
Historical File N4337.5-W11830/7.5
Topographic Division 1978

AMS 2271 II NE—SERIES V892

NOV 15 1978

3000