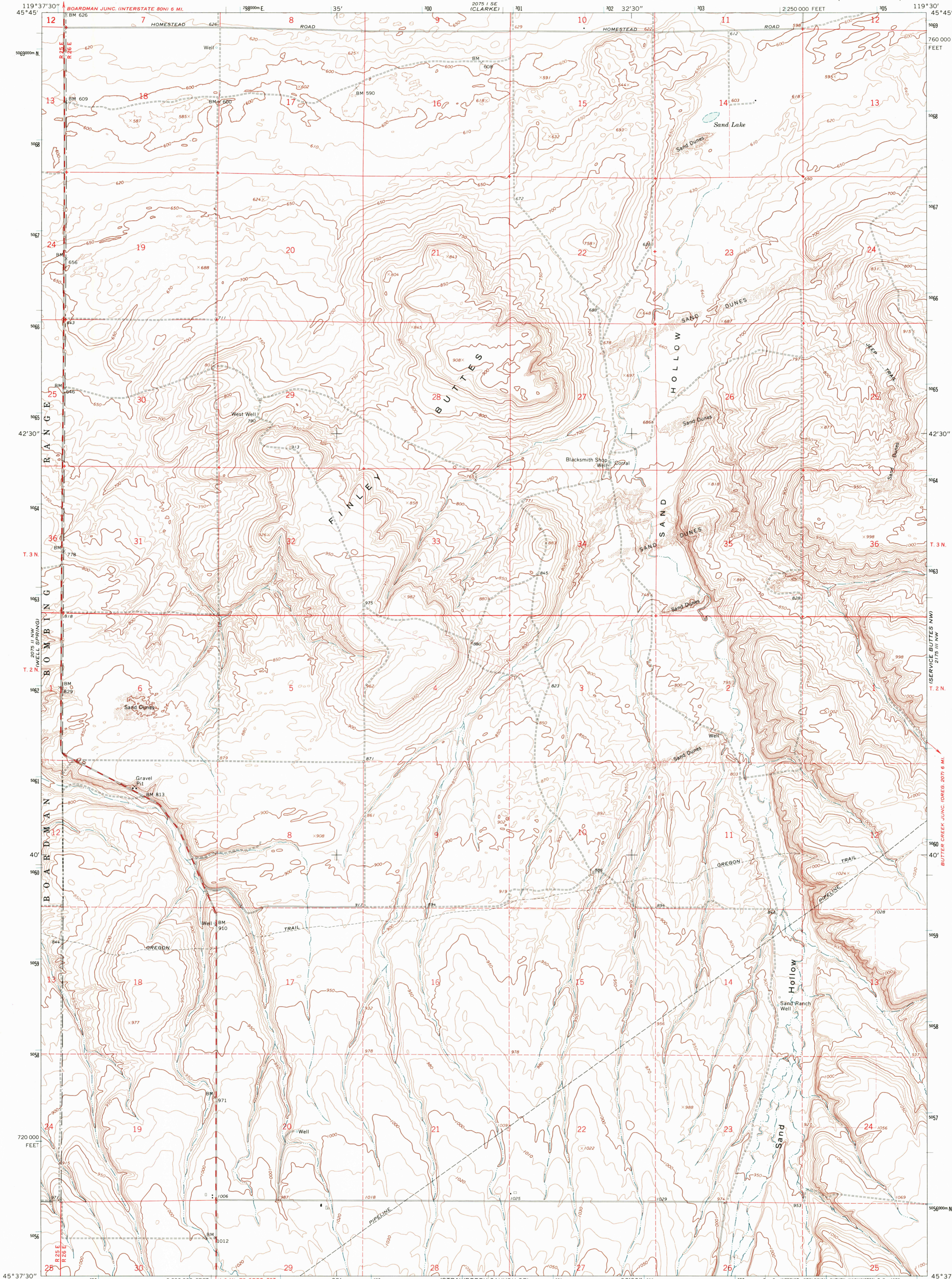
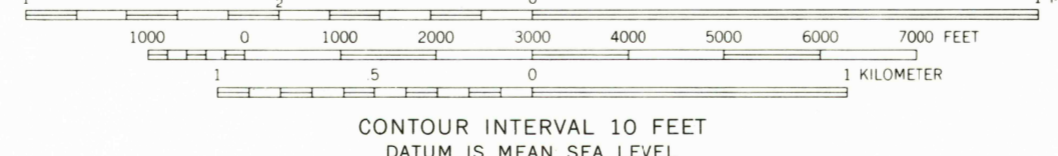
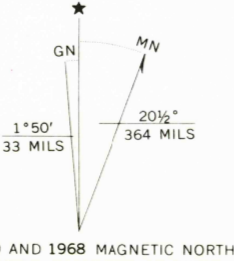


UNITED STATES  
DEPARTMENT OF THE INTERIOR  
GEOLOGICAL SURVEY

STRAWBERRY CANYON NE QUADRANGLE  
OREGON—MORROW CO.  
7.5 MINUTE SERIES (TOPOGRAPHIC)



Mapped, edited, and published by the Geological Survey  
Control by USGS and USC&GS  
Topography by photogrammetric methods from aerial  
photographs taken 1965. Field checked 1968  
Polyconic projection. 1927 North American datum  
10,000-foot grid based on Oregon coordinate system,  
north zone  
1000-meter Universal Transverse Mercator grid ticks,  
zone 11, shown in blue  
Fine red dashed lines indicate selected fence lines



CONTOUR INTERVAL 10 FEET  
DATUM IS MEAN SEA LEVEL

USGS  
Historical File  
Topographic Division



ROAD CLASSIFICATION  
Medium-duty — Light-duty  
Unimproved dirt —

STRAWBERRY CANYON NE, OREG.  
N4537.5—W11930.7.5

1968

AMS 2075 II NE—SERIES V892

THIS MAP COMPLIES WITH NATIONAL MAP ACCURACY STANDARDS  
FOR SALE BY U.S. GEOLOGICAL SURVEY, DENVER, COLORADO 80225, OR WASHINGTON, D.C. 20242  
A FOLDER DESCRIBING TOPOGRAPHIC MAPS AND SYMBOLS IS AVAILABLE ON REQUEST

U.S.G.S.  
FILE COPY  
TOPOGRAPHIC DIVISION

2200  
JUL 15 1970