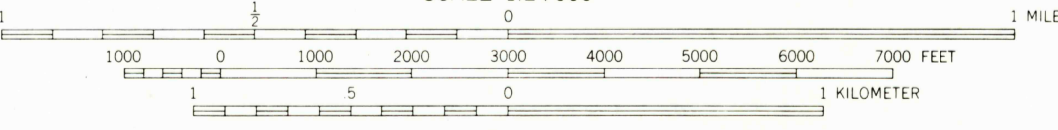
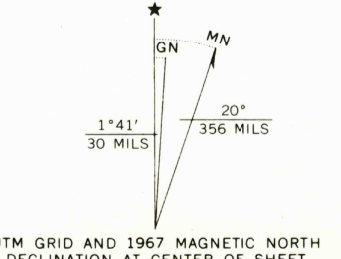


Mapped, edited, and published by the Geological Survey  
Control by USGS and USC&GS  
Topography by photogrammetric methods from aerial photographs taken 1963. Field checked 1967  
Polyconic projection. 1927 North American datum  
10,000-foot grid based on Oregon coordinate system, south zone  
1000-meter Universal Transverse Mercator grid ticks, zone 10, shown in blue  
Fine red dashed lines indicate selected fence lines



CONTOUR INTERVAL 20 FEET  
DOTTED LINES REPRESENT 10-FOOT CONTOURS  
DATUM IS MEAN SEA LEVEL

USGS  
Historical File  
Topographic Division



ROAD CLASSIFICATION  
Light-duty ————— Unimproved dirt = - - - - -

SUGARLOAF BUTTE, OREG.  
N4352.5 - W12030.7.5

1967

AMS 1871 I NE - SERIES V892

THIS MAP COMPLIES WITH NATIONAL MAP ACCURACY STANDARDS  
FOR SALE BY U.S. GEOLOGICAL SURVEY, DENVER, COLORADO 80225, OR WASHINGTON, D. C. 20242  
A FOLDER DESCRIBING TOPOGRAPHIC MAPS AND SYMBOLS IS AVAILABLE ON REQUEST

U.S.G.S.  
FILE COPY  
TOPOGRAPHIC DIVISION

MAY 2 1969