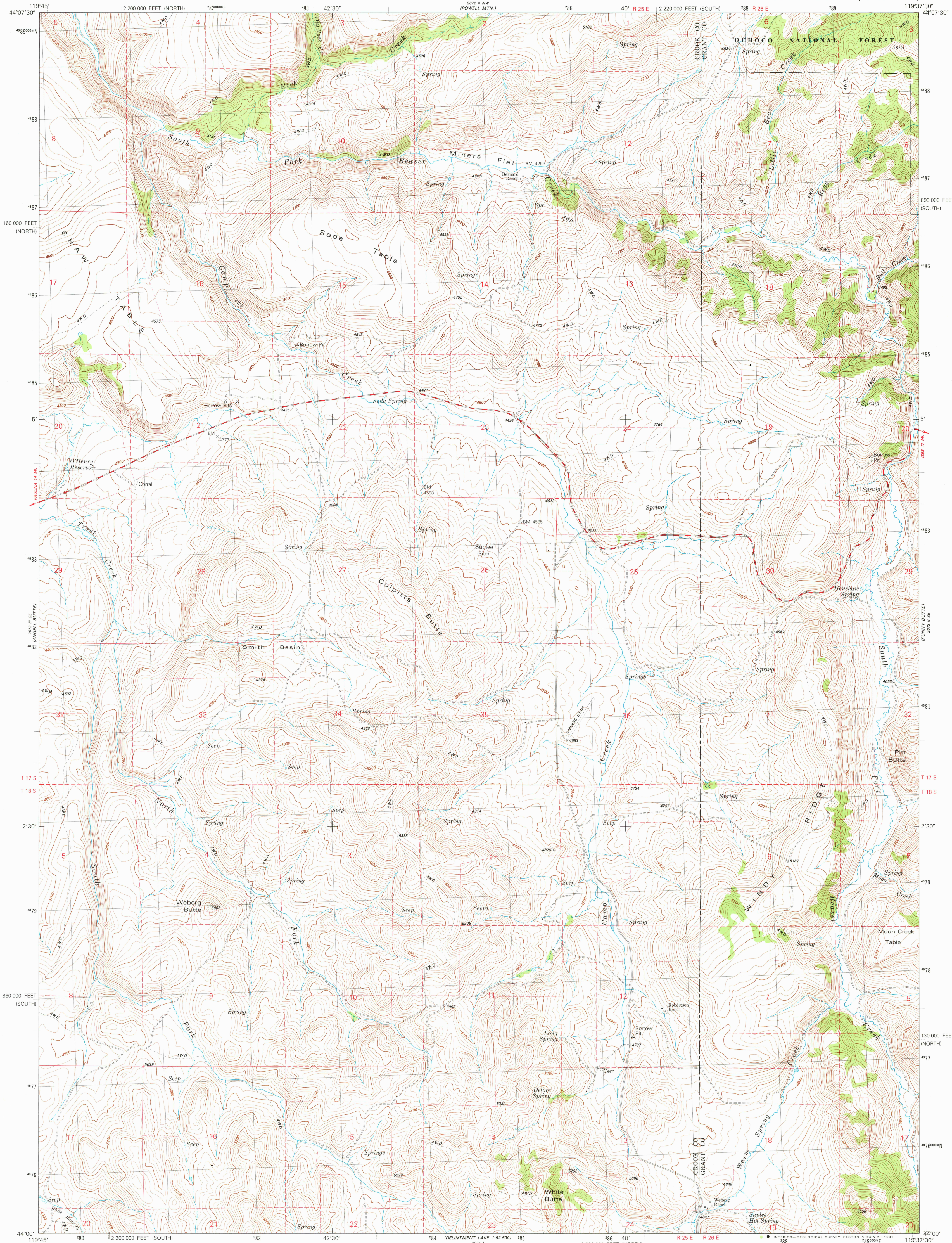
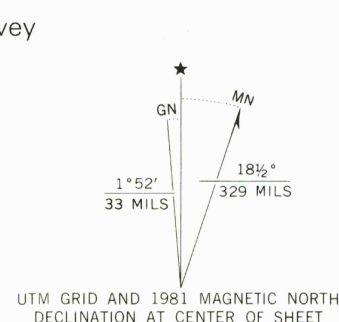


UNITED STATES  
DEPARTMENT OF THE INTERIOR  
GEOLOGICAL SURVEY

SUPLEE QUADRANGLE  
OREGON  
7.5 MINUTE SERIES (TOPOGRAPHIC)



Mapped, edited, and published by the Geological Survey  
Control by USGS and NOS/NOAA  
Topography by photogrammetric methods from aerial  
photographs taken 1974. Field checked 1977  
Map edited 1981  
Projection: Oregon coordinate system, south zone  
(Lambert conformal conic)  
10,000-foot grid ticks based on Oregon coordinate system,  
south and north zones  
1000-meter Universal Transverse Mercator grid, zone 11  
1927 North American Datum  
To place on the predicted North American Datum 1983  
move the projection lines 19 meters north and  
87 meters east as shown by dashed corner ticks  
There may be private inholdings within the boundaries of  
the National or State reservations shown on this map



SCALE 1:24,000  
1 0 1000 2000 3000 4000 5000 6000 7000 FEET  
1 0 1 2 3 4 5 6 7 8 9 10 KILOMETER  
CONTOUR INTERVAL 20 FEET  
NATIONAL GEODETIC VERTICAL DATUM OF 1929



ROAD CLASSIFICATION  
Primary highway, hard surface  
Secondary highway, hard surface  
Unimproved road  
Interstate Route  
U. S. Route  
State Route  
Light-duty road, hard or improved surface  
Unimproved road  
Interstate Route  
U. S. Route  
State Route

SUPLEE, OREG.  
N4400-W11937.5/7.5

1981

DMA 2072 II SW-SERIES V892

THIS MAP COMPLIES WITH NATIONAL MAP ACCURACY STANDARDS  
FOR SALE BY U. S. GEOLOGICAL SURVEY, DENVER, COLORADO 80225, OR RESTON, VIRGINIA 22092  
A FOLDER DESCRIBING TOPOGRAPHIC MAPS AND SYMBOLS IS AVAILABLE ON REQUEST

RETURN TO :  
USGS AND HISTORICAL MAP ARCHIVES