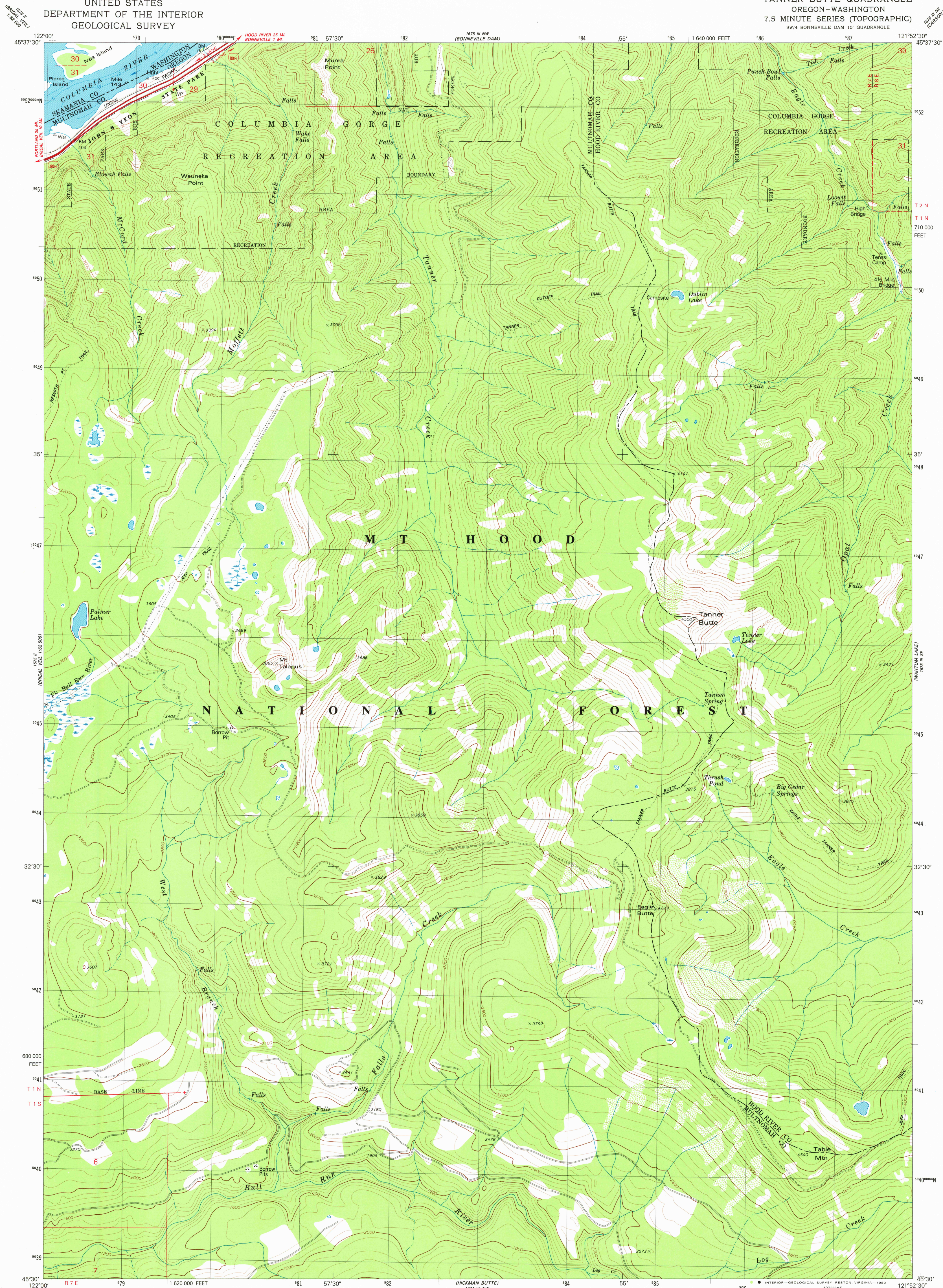


UNITED STATES  
DEPARTMENT OF THE INTERIOR  
GEOLOGICAL SURVEY

TANNER BUTTE QUADRANGLE  
OREGON-WASHINGTON  
7.5 MINUTE SERIES (TOPOGRAPHIC)  
SW/4 BONNEVILLE DAM 15' QUADRANGLE



Mapped, edited, and published by the Geological Survey

Control by USGS and NOS/NOAA

Topography by photogrammetric methods from aerial

photographs taken 1973. Field checked 1976. Map edited 1979

Selected hydrographic data compiled from NOS/NOAA Chart 18531 (1977)

This information is not intended for navigational purposes

Projection and 10,000-foot grid ticks: Oregon coordinate

system, north zone (Lambert conformal conic)

1000-meter Universal Transverse Mercator grid, zone 10

1927 North American Datum

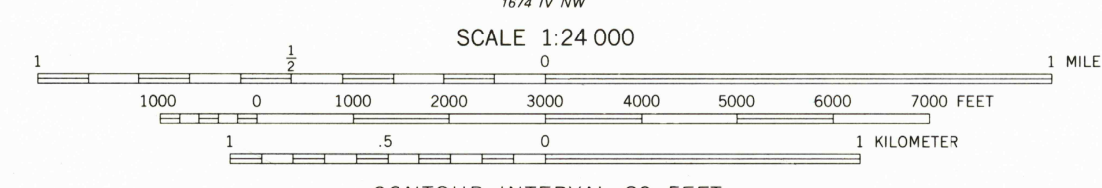
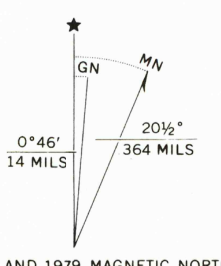
To place on the predicted North American Datum 1983

move the projection lines 22 meters north and

92 meters east as shown by dashed corner ticks

There may be private inholdings within the boundaries of

the National or State reservations shown on this map



ROAD CLASSIFICATION	
Primary highway, hard surface	Light-duty road; hard or improved surface
Secondary highway, hard surface	Unimproved road
Interstate Route	U. S. Route
	State Route

TANNER BUTTE, OREG.-WASH.  
SW/4 BONNEVILLE DAM 15' QUADRANGLE  
N4530-W12152.5/7.5  
USGS  
Historical File  
Topographic Division  
1979

DMA 1675 III SW-SERIES V892

JUN 5 1980  
2200