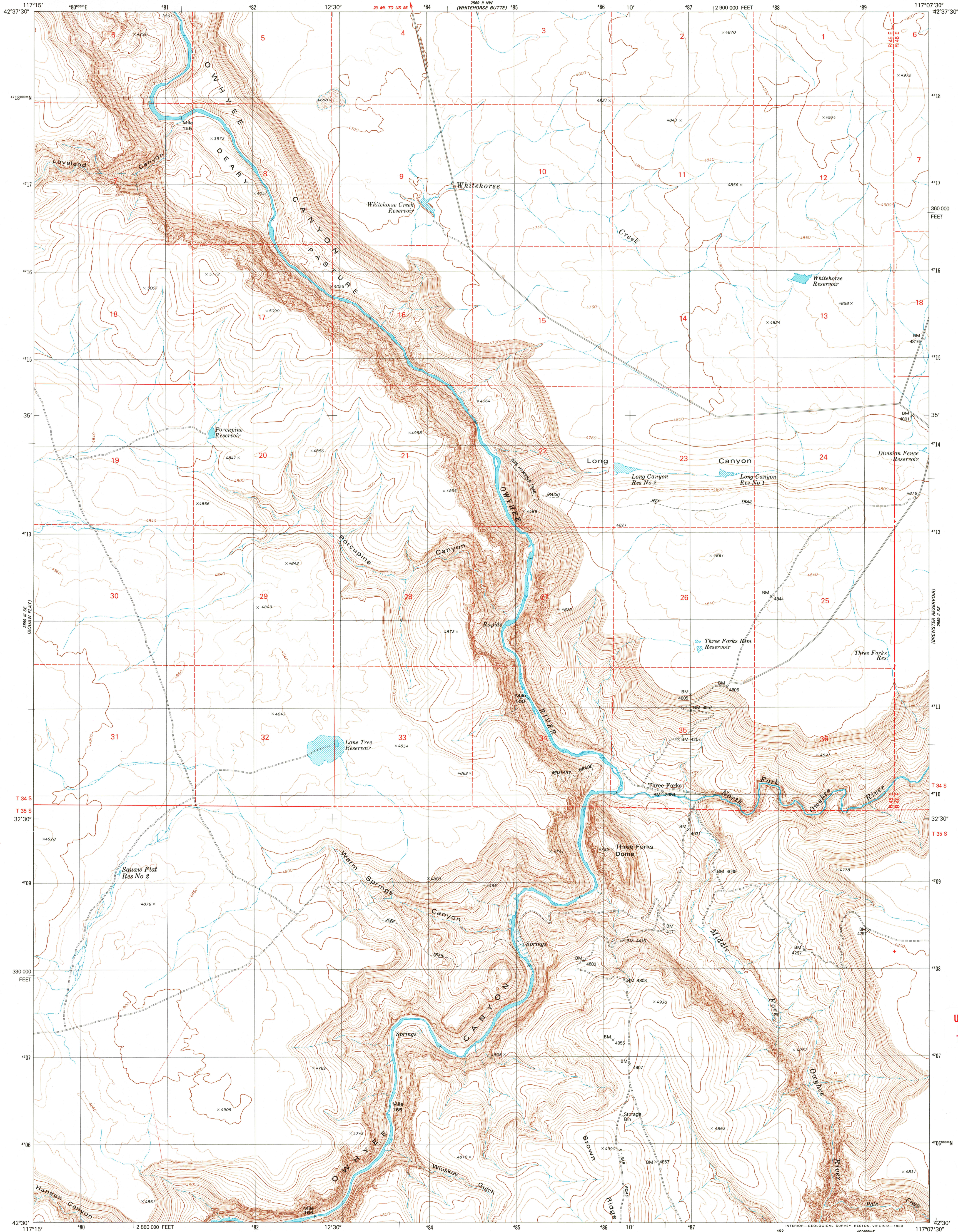




U.S. DEPARTMENT OF THE INTERIOR
U.S. GEOLOGICAL SURVEY

THREE FORKS QUADRANGLE
OREGON—MALHEUR CO
7.5 MINUTE SERIES (TOPOGRAPHIC)

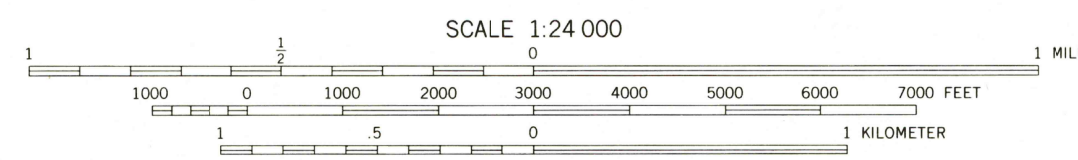
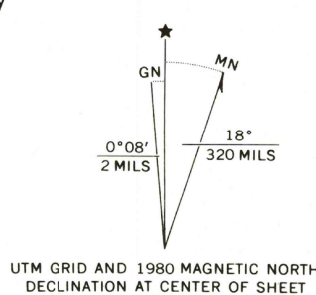


Mapped, edited, and published by the Geological Survey

Control by USGS and NOS/NOAA
Topography by photogrammetric methods from aerial photographs taken 1973. Field checked 1975
Map edited 1980

Projection and 10,000-foot grid ticks: Oregon coordinate system, south zone (Lambert conformal conic)
1000-meter Universal Transverse Mercator grid, zone 11 1927 North American Datum
To place on the predicted North American Datum 1983 move the projection lines 15 meters north and 79 meters east as shown by dashed corner ticks

Fine red dashed lines indicate selected fence and field lines where generally visible on aerial photographs
This information is unchecked
Certain land lines are omitted because of insufficient data



CONTOUR INTERVAL 20 FEET
SUPPLEMENTARY CONTOUR INTERVAL 10 FEET
NATIONAL GEODETIC VERTICAL DATUM OF 1929



ROAD CLASSIFICATION

Primary highway, hard surface	Light-duty road, hard or improved surface
Secondary highway, hard surface	Unimproved road
Interstate Route	U. S. Route
	State Route

JUN 3 0 2004 THREE FORKS, OREG.
N4230-W11707.5/7.5

THIS MAP COMPLIES WITH NATIONAL MAP ACCURACY STANDARDS
FOR SALE BY U.S. GEOLOGICAL SURVEY, P.O. BOX 25286, DENVER, COLORADO 80225
A FOLDER DESCRIBING TOPOGRAPHIC MAPS AND SYMBOLS IS AVAILABLE ON REQUEST



USGS Library
Reston, VA
Topo Archive

