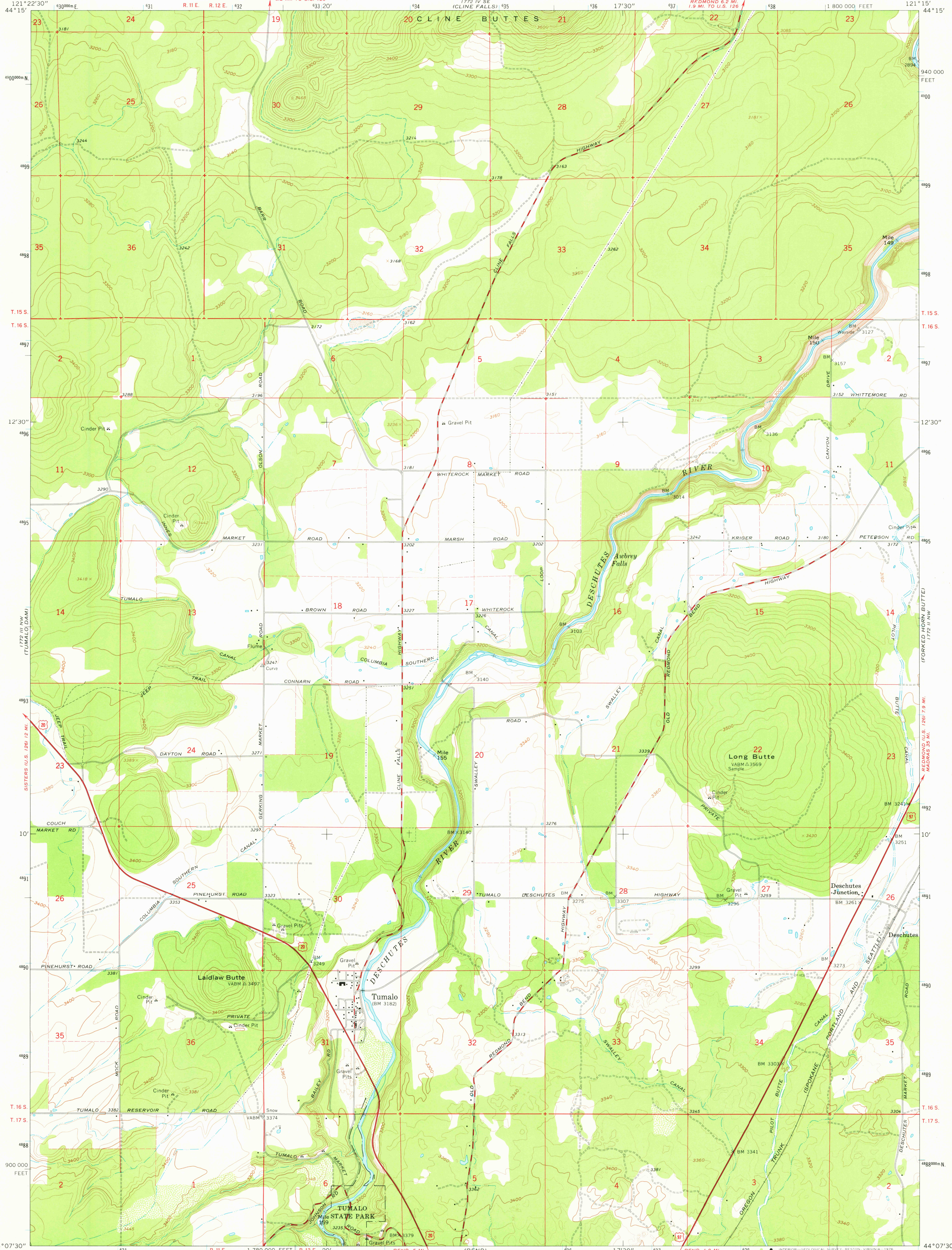


UNITED STATES
DEPARTMENT OF THE INTERIOR
GEOLOGICAL SURVEY

TUMALO QUADRANGLE
OREGON-DESCHUTES CO.
7.5 MINUTE SERIES (TOPOGRAPHIC)



Mapped, edited, and published by the Geological Survey

Control by USGS and USC&GS

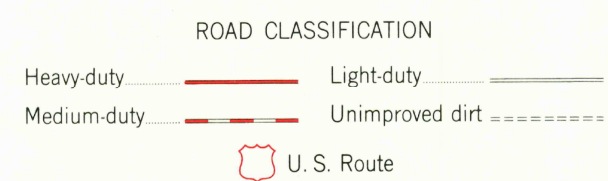
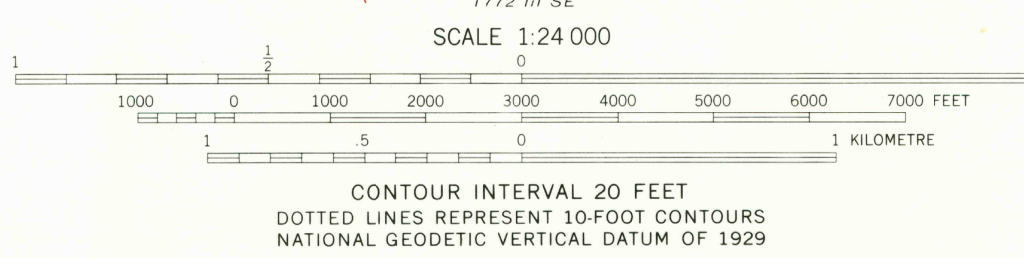
Topography by photogrammetric methods from aerial photographs taken 1957 and 1959. Field checked 1962

Polyconic projection. 1927 North American datum. 10,000-foot grid based on Oregon coordinate system, south zone. 1000-metre Universal Transverse Mercator grid ticks, zone 10, shown in blue.

Fine red dashed lines indicate selected fence lines

Map photoinspected 1971

No major culture or drainage changes observed



USGS
Historical File
Topographic Division

TUMALO, OREG.
N4407.5-W12115.7.5
1962

AMS 1772 III NE-SERIES V892
PHOTOINSPECTED 1975

THIS MAP COMPLIES WITH NATIONAL MAP ACCURACY STANDARDS
FOR SALE BY U.S. GEOLOGICAL SURVEY, DENVER, COLORADO 80225, OR RESTON, VIRGINIA 22092
A FOLDER DESCRIBING TOPOGRAPHIC MAPS AND SYMBOLS IS AVAILABLE ON REQUEST

SEP 28 1976