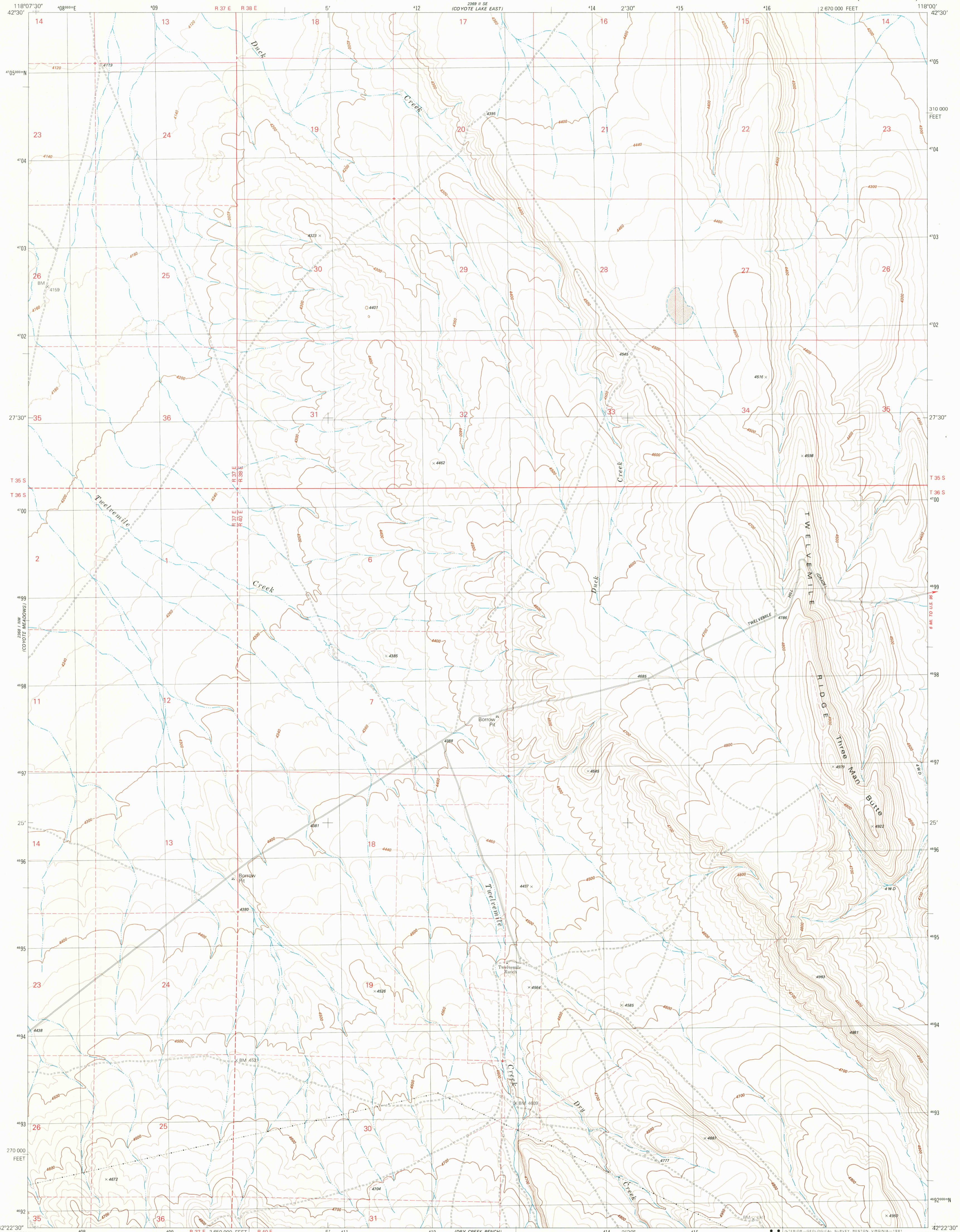


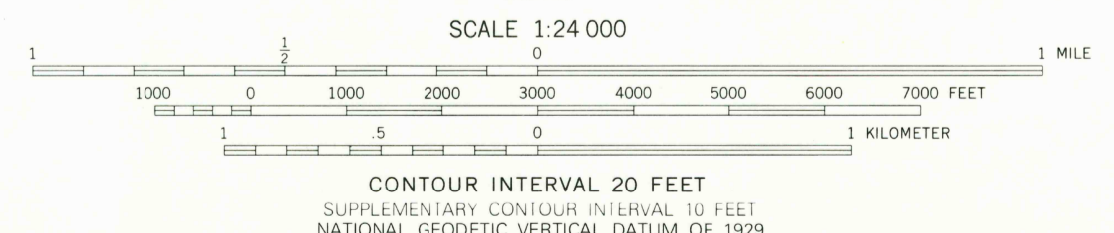
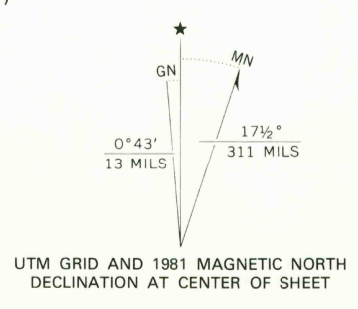
UNITED STATES
DEPARTMENT OF THE INTERIOR
GEOLOGICAL SURVEY

TWELVEMILE RIDGE QUADRANGLE
OREGON—MALHEUR CO.
7.5 MINUTE SERIES (TOPOGRAPHIC)



Mapped, edited, and published by the Geological Survey

Control by USGS and NOS/NOAA
Topography by photogrammetric methods from aerial photographs taken 1974. Field checked 1975
Map edited 1981
Projection and 10,000-foot grid ticks: Oregon coordinate system, south zone (Lambert conformal conic) 1000-meter Universal Transverse Mercator grid, zone 11 1927 North American Datum
To place on the predicted North American Datum 1983 move the projection lines 16 meters north and 82 meters east as shown by dashed corner ticks
Fine red dashed lines indicate selected fence and field lines where generally visible on aerial photographs
This information is unchecked
Certain land lines are omitted because of insufficient data



ROAD CLASSIFICATION

Primary highway, hard surface	Light-duty road, hard or improved surface
Secondary highway, hard surface	Unimproved road
Interstate Route	U. S. Route
	State Route

TWELVEMILE RIDGE, OREG.
N4222.5-W11800.7.5

1981

DMA 2368 1 NE—SERIES V892

NOV 24 1981

2000