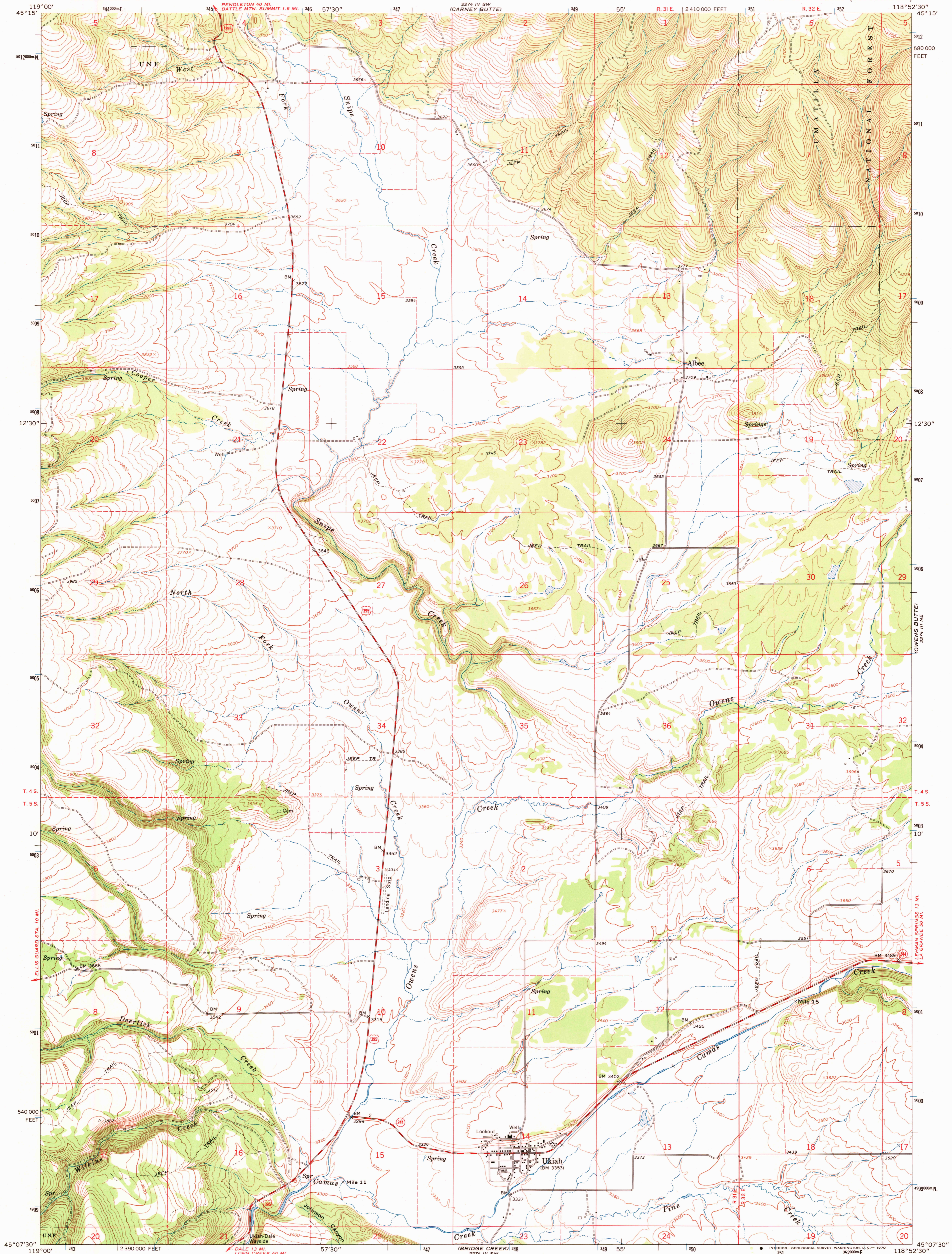
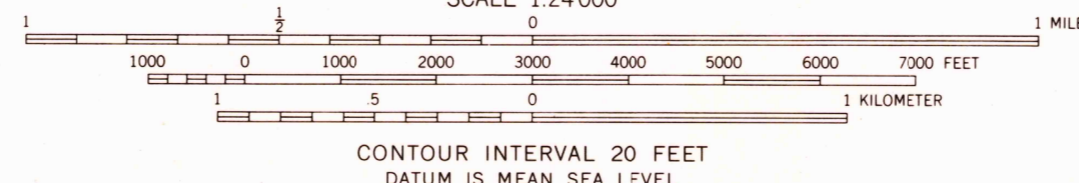
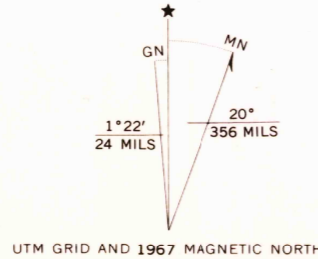


27° 14' 55" N  
118° 52' 30" W  
GRANITE MEADOWS



Mapped, edited, and published by the Geological Survey  
Control by USGS and USC&GS  
Topography by photogrammetric methods from aerial  
photographs taken 1965. Field checked 1967  
Polyconic projection. 1927 North American datum  
10,000-foot grid based on Oregon coordinate system,  
north zone  
1000-meter Universal Transverse Mercator grid ticks,  
zone 11, shown in blue  
Fine red dashed lines indicate selected fence lines



USGS  
Historical File  
Topographic Division

ROAD CLASSIFICATION  
Medium-duty — Light-duty  
Unimproved dirt — State  
U. S. Route — State Route



THIS MAP COMPLIES WITH NATIONAL MAP ACCURACY STANDARDS  
FOR SALE BY U. S. GEOLOGICAL SURVEY, DENVER, COLORADO 80225, OR WASHINGTON, D. C. 20242  
A FOLDER DESCRIBING TOPOGRAPHIC MAPS AND SYMBOLS IS AVAILABLE ON REQUEST

U.S.G.S. UKIAH, OREG.  
FILE COPY N4507.5—W11852.5/7.5  
TOPOGRAPHIC DIVISION 1967  
AMS 2274 III NW—SERIES V892

3640  
MAY 8 1970