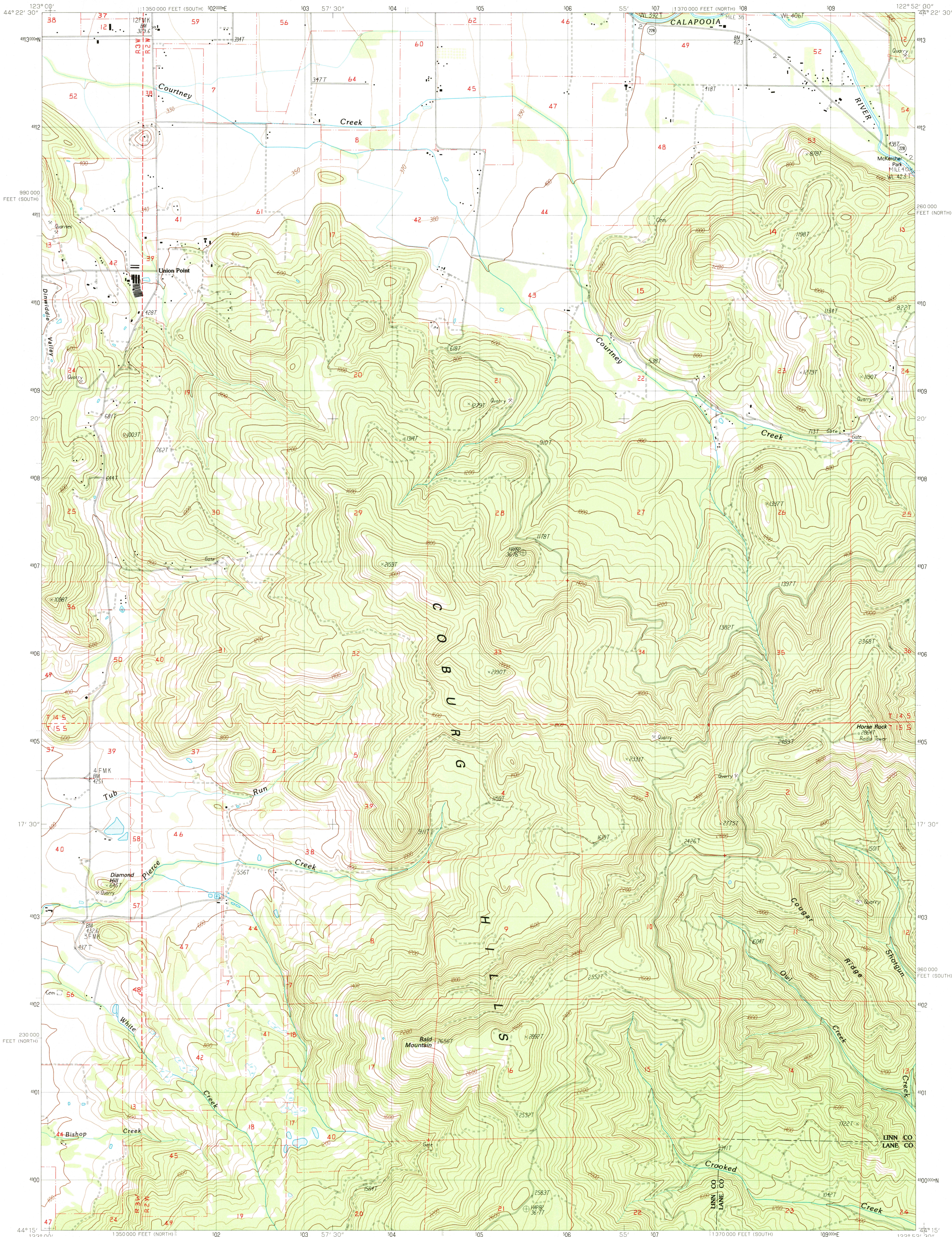


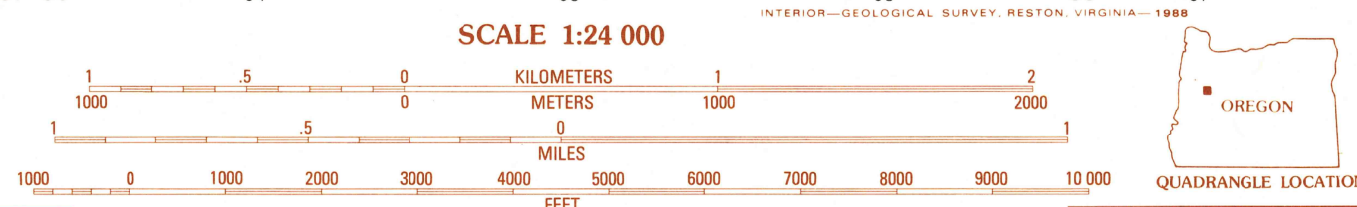
UNITED STATES
DEPARTMENT OF THE INTERIOR
GEOLOGICAL SURVEY

UNION POINT QUADRANGLE
OREGON
7.5 MINUTE SERIES (TOPOGRAPHIC)



PRODUCED BY THE UNITED STATES GEOLOGICAL SURVEY
CONTROL BY USGS, NOSNORA
COMPILED FROM AERIAL PHOTOGRAPHS TAKEN 1982
FIELD CHECKED 1984. MAP EDITED 1988
PROJECTION LAMBERT CONFORMAL CONIC
GRID: 1000-METER UNIVERSAL TRANSVERSE MERCATOR
10,000-FOOT STATE GRID TICKS, .OREG., NORTH & SOUTH ZONES
UTM GRID DECLINATION 090° EAST
1980 MAGNETIC NORTH DECLINATION 1990° EAST
VERTICAL DATUM ... NATIONAL GEODETIC VERTICAL DATUM OF 1929
HORIZONTAL DATUM ... 1927 NORTH AMERICAN DATUM
To place on the predicted North American Datum of 1983,
move the projection lines as shown by dashed corner ticks
(.22 meters north / .95 meters east)
There may be private inholdings within the boundaries of any
Federal and State Reservations shown on this map
No distinction made between houses, barns, and other buildings

PROVISIONAL MAP
Produced from original
manuscript drawings. Infor-
mation shown as of date of
photography.



CONTOUR INTERVAL 40 FEET
SUPPLEMENTARY CONTOUR INTERVAL 10 FEET
CONTROL ELEVATIONS SHOWN TO THE NEAREST 0.1 FOOT
OTHER ELEVATIONS SHOWN TO THE NEAREST FOOT
To convert meters to feet multiply by 3.2808
To convert feet to meters multiply by 0.3048

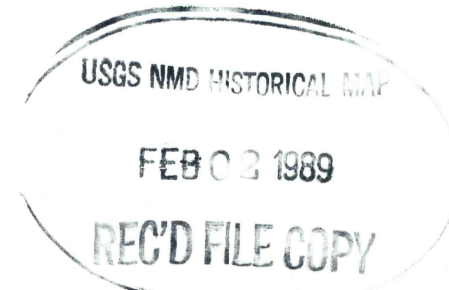
1	2	3
4	5	6
7	8	9

QUADRANGLE LOCATION

1	2	3	4	5	6	7	8
1	2	3	4	5	6	7	8

ADJOINING 7.5' QUADRANGLE NAMES

ROAD LEGEND
Improved Road
Unimproved Road
Trail
Interstate Route
U.S. Route
State Route
UNION POINT, OREG.
PROVISIONAL EDITION 1988



THIS MAP COMPLIES WITH NATIONAL MAP ACCURACY STANDARDS
FOR SALE BY U. S. GEOLOGICAL SURVEY, DENVER, COLORADO 80225, OR RESTON, VIRGINIA 22092

44122-C8-TF-024