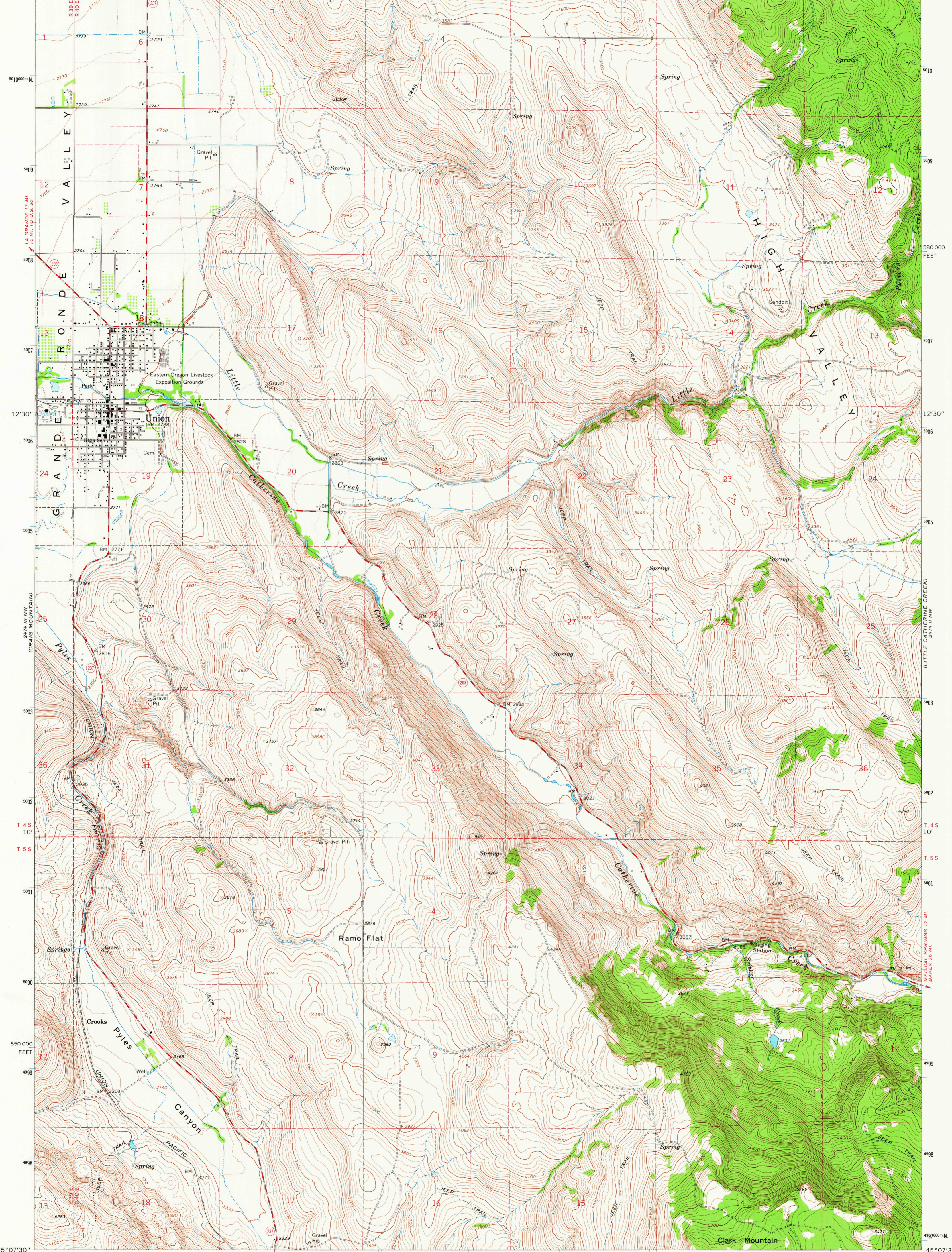


24° 14' 30" N
(CORALEY)

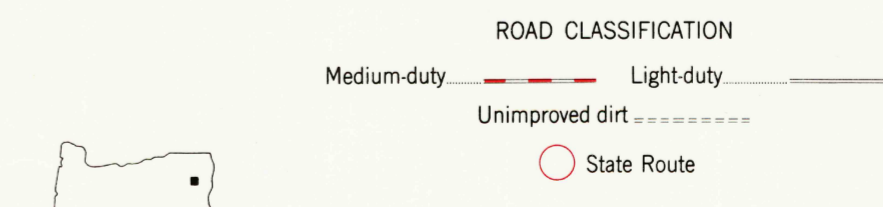
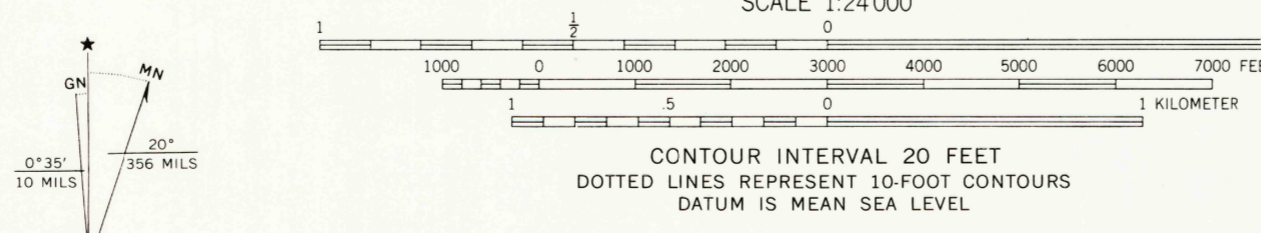
24° 14' 30" N
(MT. PANNA)

117° 52' 30" 4320000 E COVE 6 MI. 433 434 50' 435 436 2474 IV SE (COVE) 437 47' 30" COVE 4.2 MI. 2 700 000 FEET 440 41 117° 45' 45' 15"



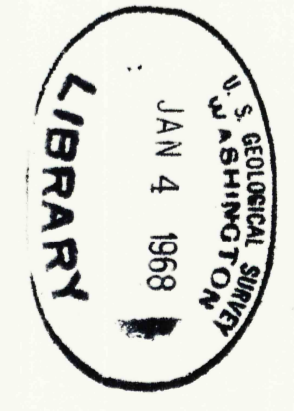
45° 07' 30" 117° 52' 30" 12 680 000 FEET 433 (TELOCASET) 2474 III SE (TELOCASET) 434 50' 435 436 437 47' 30" 438 439 4400000 E 4117° 45' 45' 15"

Mapped, edited, and published by the Geological Survey
Control by USGS, USC&GS, and State of Oregon
Topography by photogrammetric methods from aerial
photographs taken 1963. Field checked 1965
Polyconic projection. 1927 North American datum
10,000-foot grid based on Oregon coordinate system,
north zone
1000-meter Universal Transverse Mercator grid ticks,
zone 11, shown in blue
Fine red dashed lines indicate selected fence lines
Certain land lines are omitted because of insufficient data



UNION, OREG.
N4507.5—W11745.7.5

1965
AMS 2474 III NE—SERIES V892



24° 14' 30" N
(NORTH POWDER)

24° 14' 30" N
(MEDICAL SPRINGS)