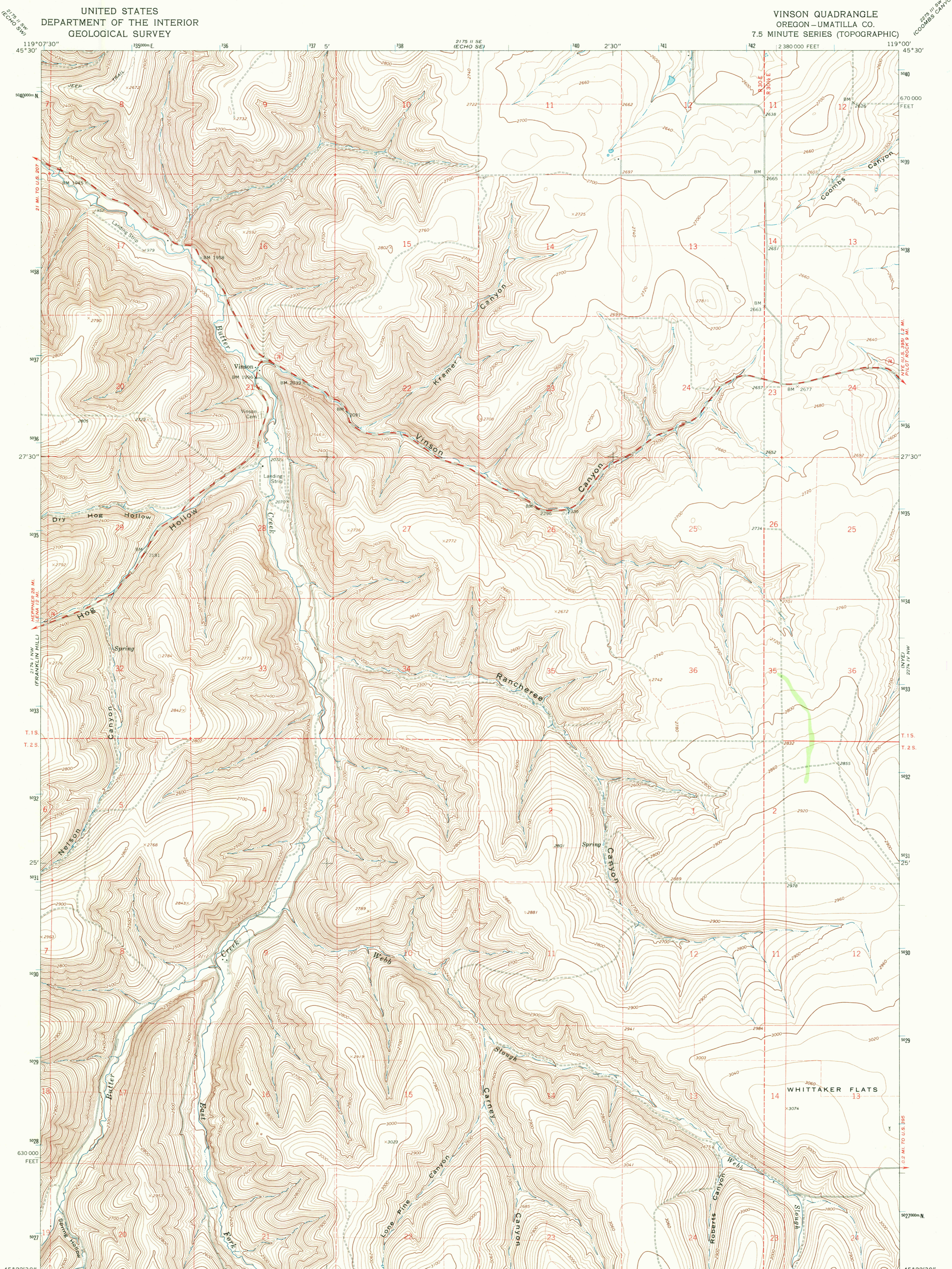
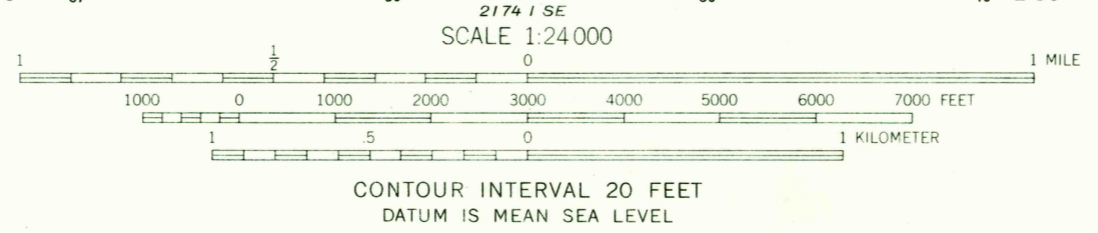
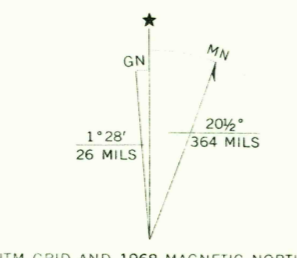


UNITED STATES
DEPARTMENT OF THE INTERIOR
GEOLOGICAL SURVEY

VINSON QUADRANGLE
OREGON—UMATILLA CO.
7.5 MINUTE SERIES (TOPOGRAPHIC)



Mapped, edited, and published by the Geological Survey
Control by USGS and USC&GS
Topography by photogrammetric methods from aerial photographs taken 1965. Field checked 1968
Polyconic projection. 1927 North American datum
10,000-foot grid based on Oregon coordinate system, north zone
100-meter Universal Transverse Mercator grid ticks, zone 11, shown in blue
Fine red dashed lines indicate selected fence lines



USGS
Historical File
Topographic Division

ROAD CLASSIFICATION
Medium-duty ——— Light-duty ———
Unimproved dirt ———
State Route ○



U.S.G.S.
FILE COPY VINSON, OREG.
N4522.5 - W11900/7.5
TOPOGRAPHIC DIVISION 1968

THIS MAP COMPLIES WITH NATIONAL MAP ACCURACY STANDARDS
FOR SALE BY U.S. GEOLOGICAL SURVEY, DENVER, COLORADO 80225, OR WASHINGTON, D. C. 20242
A FOLDER DESCRIBING TOPOGRAPHIC MAPS AND SYMBOLS IS AVAILABLE ON REQUEST

2400
AUG 13 1970