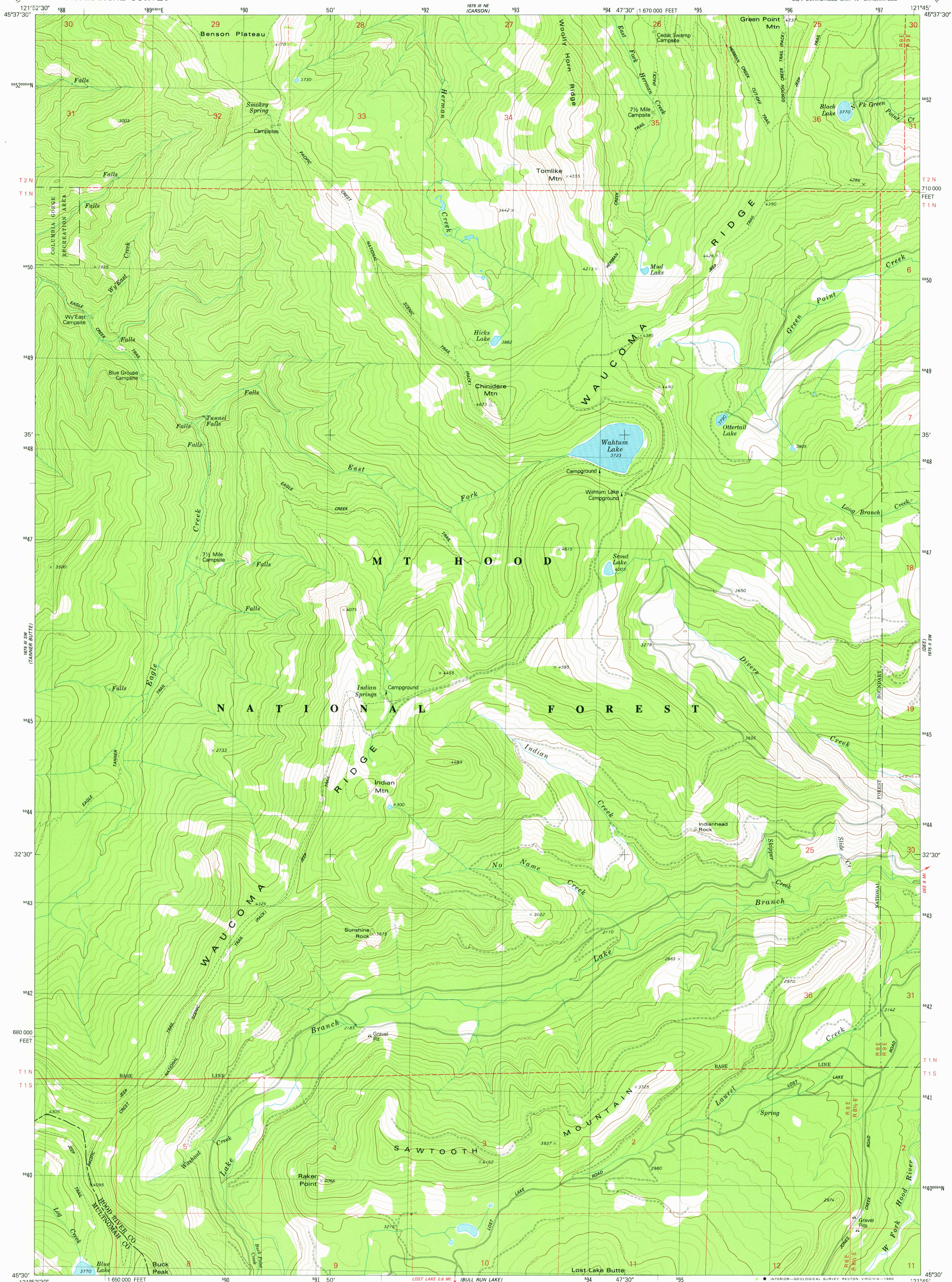


UNITED STATES
DEPARTMENT OF THE INTERIOR
GEOLOGICAL SURVEY

WAHTUM LAKE QUADRANGLE
OREGON
7.5 MINUTE SERIES (TOPOGRAPHIC)



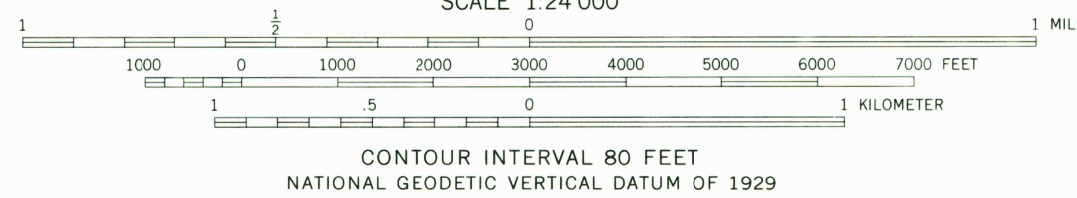
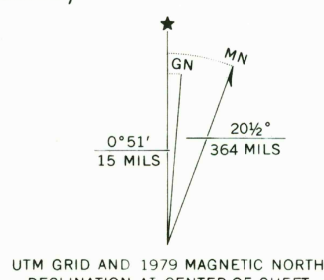
Mapped, edited, and published by the Geological Survey

Control by USGS and NOS/NOAA

Topography by photogrammetric methods from aerial photographs taken 1973. Field checked 1976. Map edited 1979.

Projection and 10,000-foot grid ticks: Oregon coordinate system, north zone (Lambert conformal conic). 1000-meter Universal Transverse Mercator grid, zone 10 1927 North American Datum. To place on the predicted North American Datum 1983 move the projection lines 22 meters north and 92 meters east as shown by dashed corner ticks.

Where omitted, land lines have not been established. There may be private inholdings within the boundaries of the National or State reservations shown on this map.



ROAD CLASSIFICATION	
Primary highway, hard surface	Light-duty road, hard or improved surface
Secondary highway, hard surface	Unimproved road
Interstate Route	U. S. Route
	State Route

USGS
Historical File
Topographic Division

WAHTUM LAKE, OREG.
SE/4 BONNEVILLE DAM 15' QUADRANGLE
N4530-W12145/7.5

1979

DMA 1675 III SE-SERIES V892

JUN - 3 1980

2000