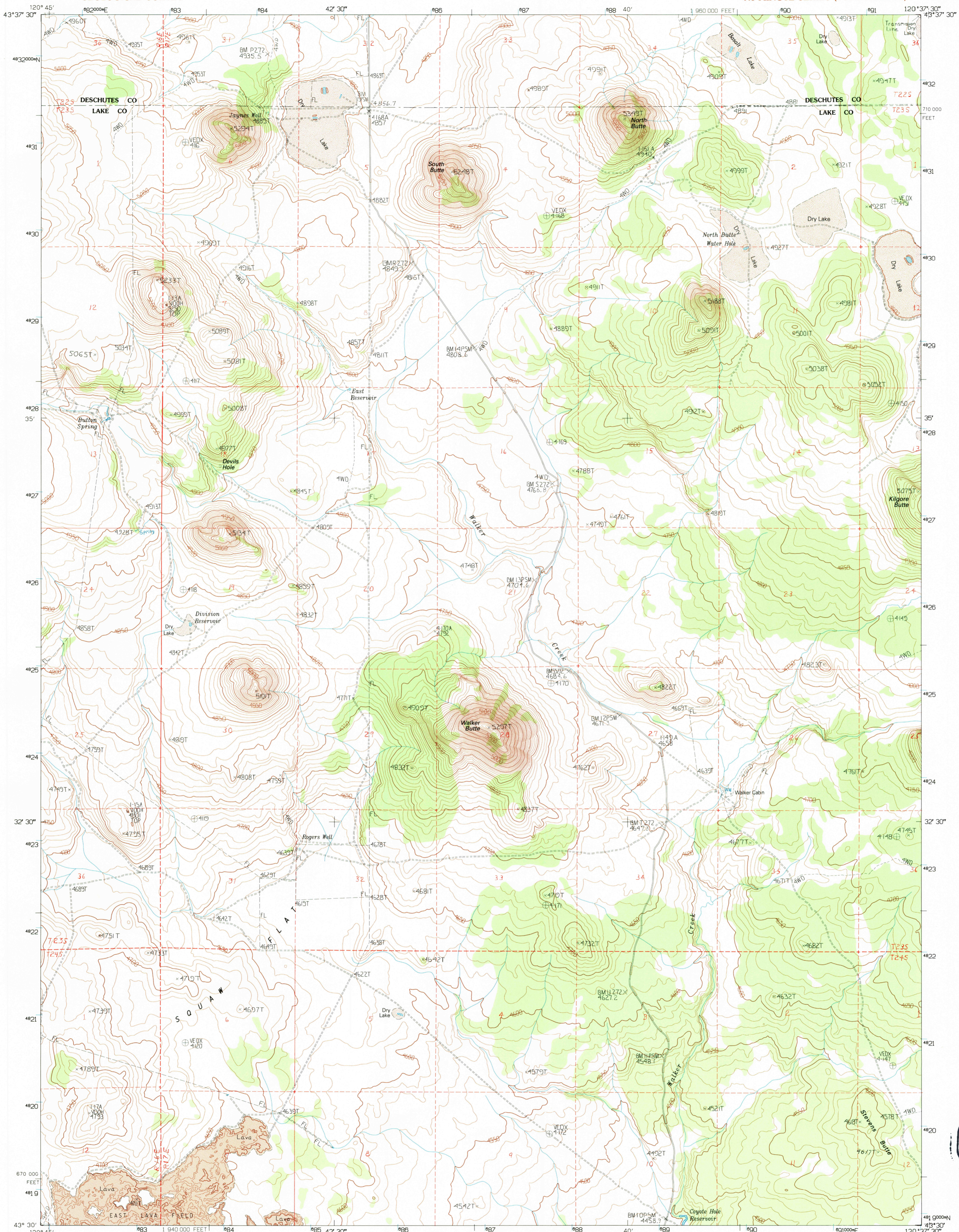


UNITED STATES  
DEPARTMENT OF THE INTERIOR  
GEOLOGICAL SURVEY

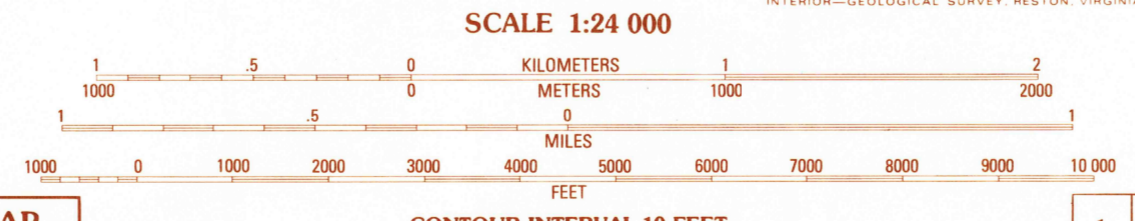
WALKER BUTTE QUADRANGLE  
OREGON  
7.5 MINUTE SERIES (TOPOGRAPHIC)



USGS HISTORICAL  
MAP ARCHIVES  
JUL 31 1995  
REC'D FILE COPY

PRODUCED BY THE UNITED STATES GEOLOGICAL SURVEY  
CONTROL BY USGS, NOS/NOAA  
COMPILED FROM AERIAL PHOTOGRAPHS TAKEN 1974 AND 1976  
FIELD CHECKED 1980, MAP EDITED 1983  
PROJECTION LAMBERT CONFORMAL CONIC  
BLUE 1000-METER UNIVERSAL TRANSVERSE MERCATOR TICS, ZONE 10  
10 000-FOOT STATE GRID TICS OREGON, SOUTH ZONE  
UTM GRID DECLINATION 18 30 EAST  
1980 MAGNETIC NORTH DECLINATION  
VERTICAL DATUM NATIONAL GEODETIC VERTICAL DATUM OF 1929  
HORIZONTAL DATUM NORTH AMERICAN DATUM OF 1927 (NAD 27)  
North American Datum of 1983 (NAD 83) is shown by  
dashed corner ticks. The values of the shift between NAD  
27 and NAD 83 for 7.5-minute intersections are obtainable  
from National Geodetic Survey NADCON software  
There may be private inholdings within the boundaries of  
any Federal and State reservations shown on this map

**PROVISIONAL MAP**  
Produced from original  
manuscript drawings. Informa-  
tion shown as of date of  
field check.



SCALE 1:24 000  
CONTOUR INTERVAL 10 FEET  
To convert meters to feet multiply by 3.2808  
To convert feet to meters multiply by 0.3048

1	2	3	1 Plot Butte
2	3	4	2 Dickerson Flat
3	4	5	3 Soldiers Cap
4	5	6	4 Fox Butte
5	6	7	5 Last Chance Lake
6	7	8	6 Hogback Butte
7	8		7 Jacks Place
8			8 Peters Creek Sink

**ROAD LEGEND**  
Improved Road.....  
Unimproved Road.....  
Trail.....  
Interstate Route U.S. Route State Route

**WALKER BUTTE, OR**  
PROVISIONAL EDITION 1983

THIS MAP COMPLIES WITH NATIONAL MAP ACCURACY STANDARDS  
FOR SALE BY U. S. GEOLOGICAL SURVEY, DENVER, COLORADO 80225, OR RESTON, VIRGINIA 22092

43120-E6-TF-024

