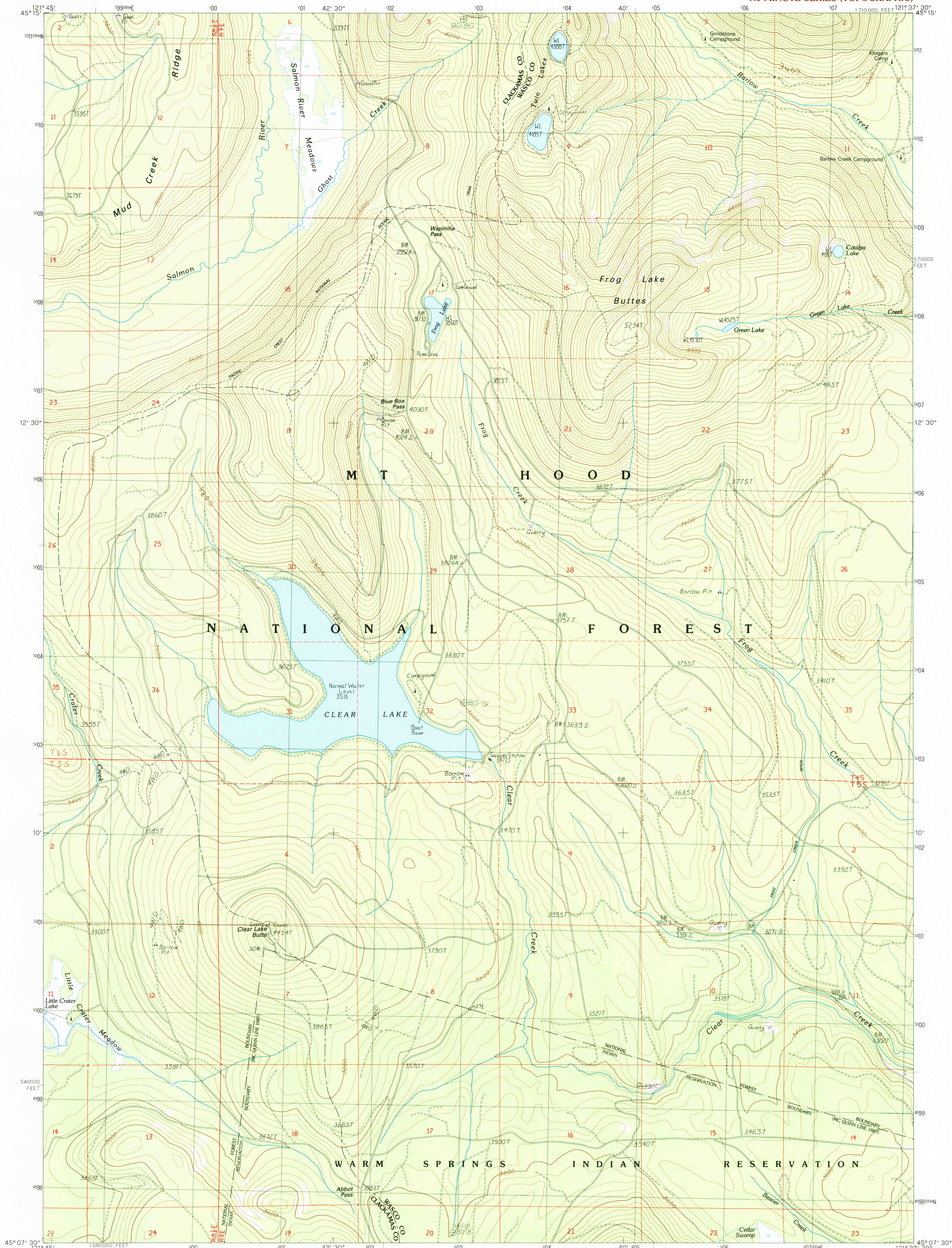


UNITED STATES
DEPARTMENT OF THE INTERIOR
GEOLOGICAL SURVEY

WAPINITIA PASS QUADRANGLE
OREGON
7.5 MINUTE SERIES (TOPOGRAPHIC)



PRODUCED BY THE UNITED STATES GEOLOGICAL SURVEY
CONTROL BY U.S.G.S. NOS/NOAA
COMPILED FROM AERIAL PHOTOGRAPHS TAKEN 1981
FIELD CHECKED 1983 MAP EDITED 1985
PROJECTION LAMBERT CONFORMAL CONIC
GRID: 1000-METER UNIVERSAL TRANSVERSE MERCATOR ZONE 10
10,000-FOOT STATE GRID TICKS DREGON, NORTH ZONE
UTM GRID DECLINATION 056° EAST
1980 MAGNETIC NORTH DECLINATION 1990° EAST
VERTICAL DATUM 1927 NORTH AMERICAN DATUM
To place on the predicted North American Datum of 1983,
move the projection lines as shown by dashed corner ticks
(22 meters north, 92 meters east).
There may be private inholdings within the boundaries of any
Federal and State Reservations shown on this map

PROVISIONAL MAP
Produced from original
manuscript drawings. Informa-
tion shown as of date of
photography.

SCALE 1:24 000
1 000 0 1000 2000
1 000 0 1000 2000
KILOMETERS
METERS
MILES
FOOT
CONTOUR INTERVAL 40 FEET
CONTROL ELEVATIONS SHOWN TO THE NEAREST 0.1 FOOT
OTHER ELEVATIONS SHOWN TO THE NEAREST FOOT
To convert meters to feet multiply by 3.2808
To convert feet to meters multiply by 0.3048

1	2	3
4	5	6
7	8	

ADJOINING 7.5' QUADRANGLE NAMES

ROAD LEGEND
Improved Road
Unimproved Road
Trail
Interstate Route
U.S. Route
State Route
WAPINITIA PASS, OREG.
PROVISIONAL EDITION 1985

USGS NMD HISTORICAL MAP
FEB 20 1986
REC'D FILE COPY

45121-B6-TF-024