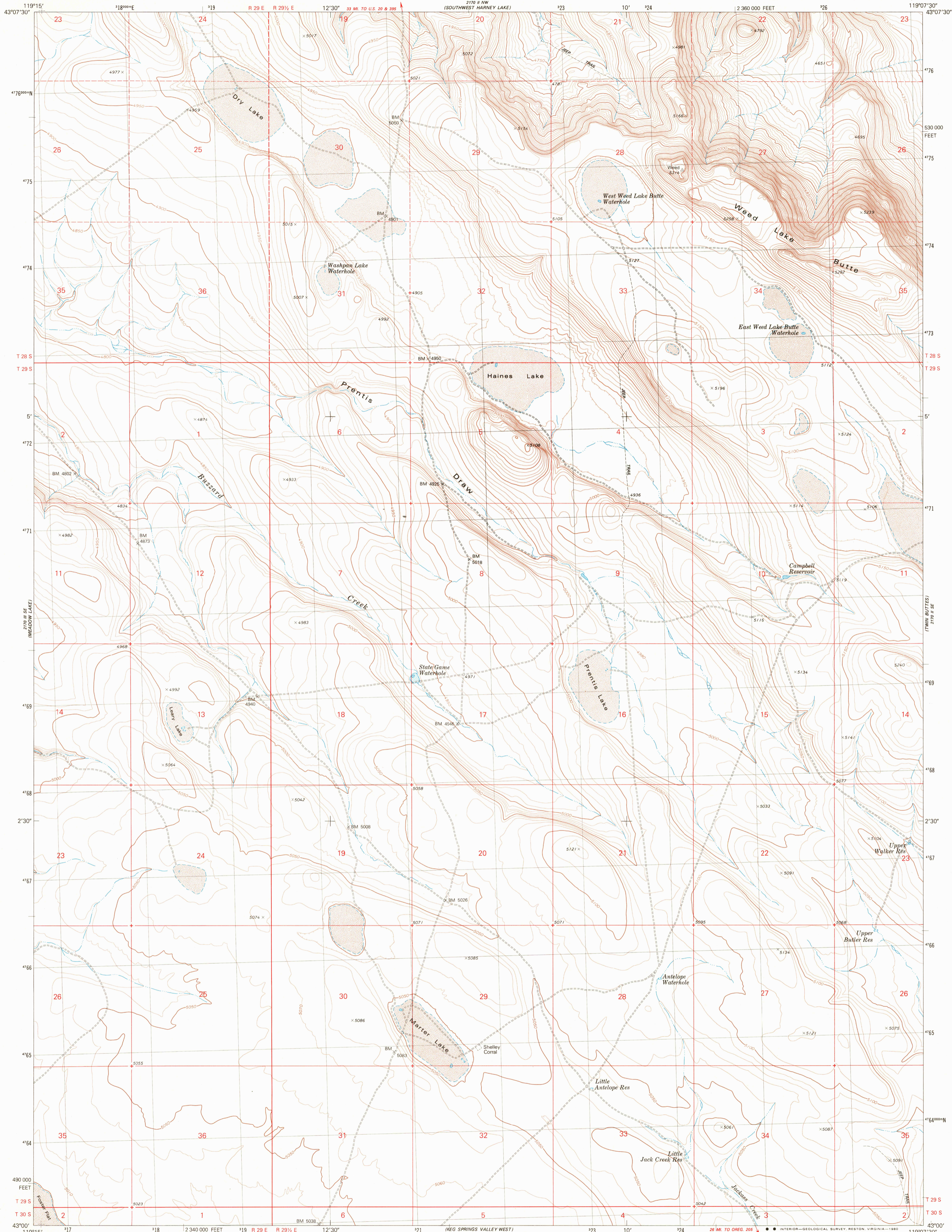
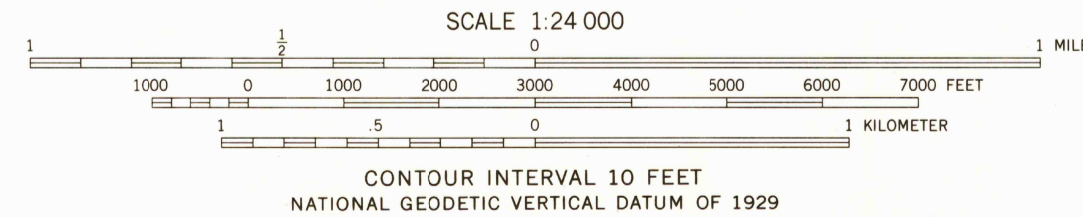
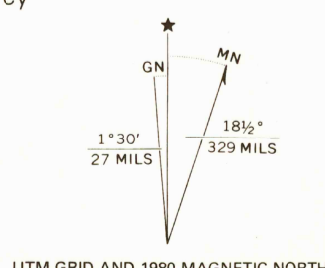


UNITED STATES  
DEPARTMENT OF THE INTERIOR  
GEOLOGICAL SURVEY

WEED LAKE BUTTE QUADRANGLE  
OREGON-HARNEY CO.  
7.5 MINUTE SERIES (TOPOGRAPHIC)



Mapped, edited, and published by the Geological Survey  
Control by USGS and NOS/NOAA  
Topography by photogrammetric methods from aerial photographs taken 1972. Field checked 1974  
Map edited 1980  
Projection and 10,000-foot grid ticks: Oregon coordinate system, south zone (Lambert conformal conic)  
1000-meter Universal Transverse Mercator grid, zone 11  
1927 North American Datum  
To place on the predicted North American Datum 1983 move the projection lines 18 meters north and 85 meters east as shown by dashed corner ticks



CONTOUR INTERVAL 10 FEET  
NATIONAL GEODETIC VERTICAL DATUM OF 1929



ROAD CLASSIFICATION

Primary highway, hard surface	Light-duty road, hard or improved surface
Secondary highway, hard surface	Unimproved road
Interstate Route	U. S. Route
	State Route

THIS MAP COMPLIES WITH NATIONAL MAP ACCURACY STANDARDS  
FOR SALE BY U. S. GEOLOGICAL SURVEY, DENVER, COLORADO 80225, OR RESTON, VIRGINIA 22092  
A FOLDER DESCRIBING TOPOGRAPHIC MAPS AND SYMBOLS IS AVAILABLE ON REQUEST

USGS  
Historical File  
Topographic Division

WEED LAKE BUTTE, OREG.  
N4300-W11907.5/7.5

1980  
DMA 2170 II SW-SERIES V892

SEP 24 1980

1960