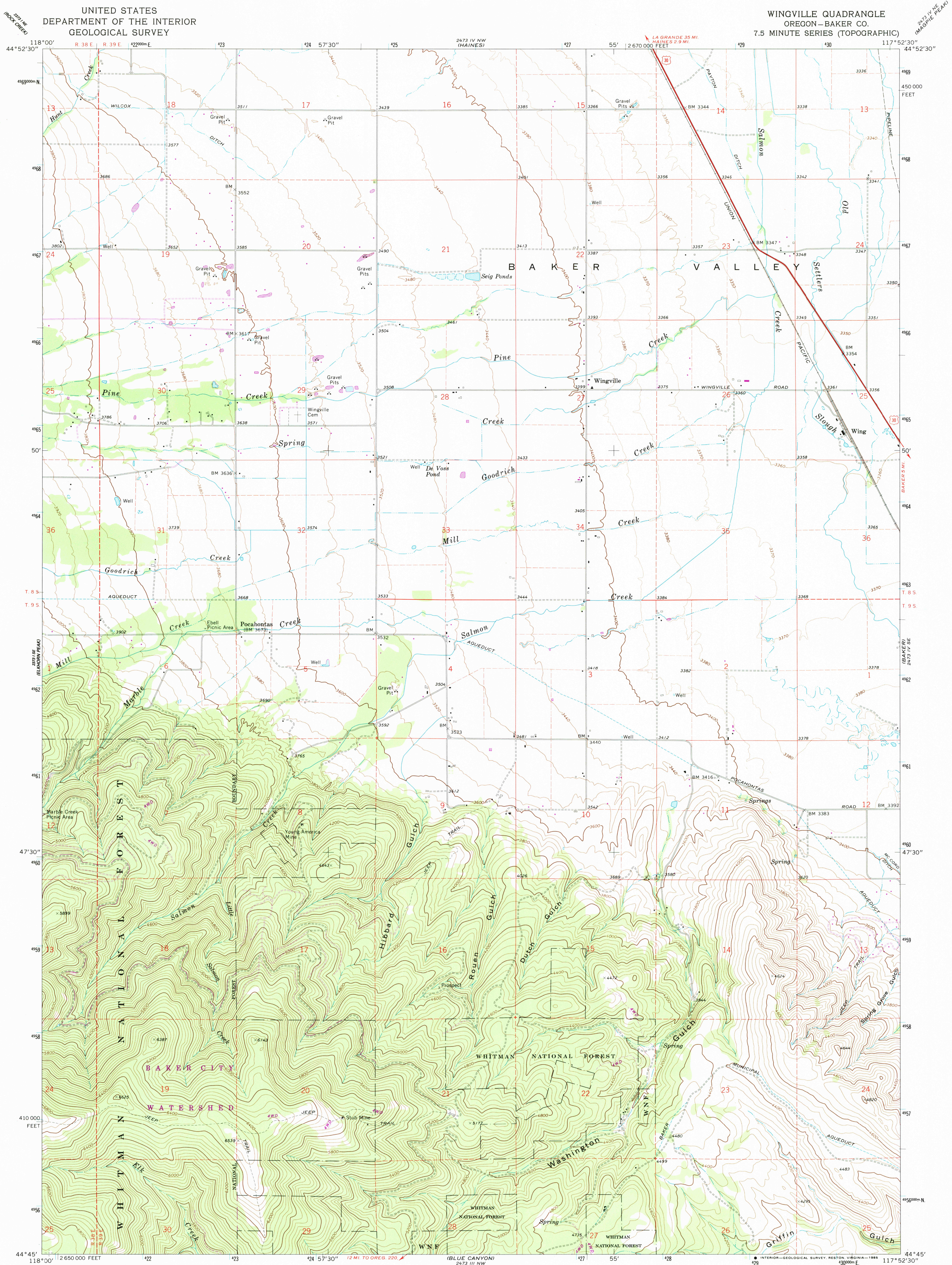


UNITED STATES  
DEPARTMENT OF THE INTERIOR  
GEOLOGICAL SURVEY

WINGVILLE QUADRANGLE  
OREGON—BAKER CO.  
7.5 MINUTE SERIES (TOPOGRAPHIC)



Mapped, edited, and published by the Geological Survey

Control by USGS, NOS/NOAA, and State of Oregon

Topography by photogrammetric methods from aerial

photographs taken 1966. Field checked 1967

Polyconic projection. 1927 North American datum

10,000-foot grid based on Oregon coordinate system,

north zone

1000-meter Universal Transverse Mercator grid ticks,

zone 11, shown in blue

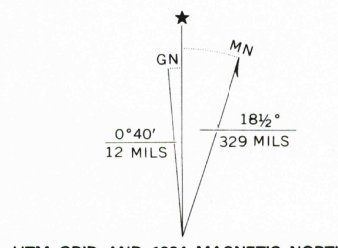
To place on the predicted North American Datum 1983

move the projection lines 17 meters north and

81 meters east as shown by dashed corner ticks

There may be private inholdings within the boundaries of

the National or State reservations shown on this map



UTM GRID AND 1984 MAGNETIC NORTH  
DECLINATION AT CENTER OF SHEET

SCALE 1:24 000

1 000 0 1000 2000 3000 4000 5000 6000 7000 FEET

1 0 5 10 15 20 25 30 35 40 45 50 55 60 65 70 75 80 85 90 95 100 METERS

CONTOUR INTERVAL 40 FEET

DOTTED LINES REPRESENT 10-FOOT CONTOURS

NATIONAL GEODETIC VERTICAL DATUM OF 1929

THIS MAP COMPLIES WITH NATIONAL MAP ACCURACY STANDARDS

FOR SALE BY U. S. GEOLOGICAL SURVEY, DENVER, COLORADO 80225, OR RESTON, VIRGINIA 22092

A FOLDER DESCRIBING TOPOGRAPHIC MAPS AND SYMBOLS IS AVAILABLE ON REQUEST



QUADRANGLE LOCATION

ROAD CLASSIFICATION

Heavy-duty Light-duty

Medium-duty Unimproved dirt

U. S. Route

WINGVILLE, OREG.

44117-G8-TF-024

1967

PHOTOREVISED 1984

DMA 2473 IV SW—SERIES V892