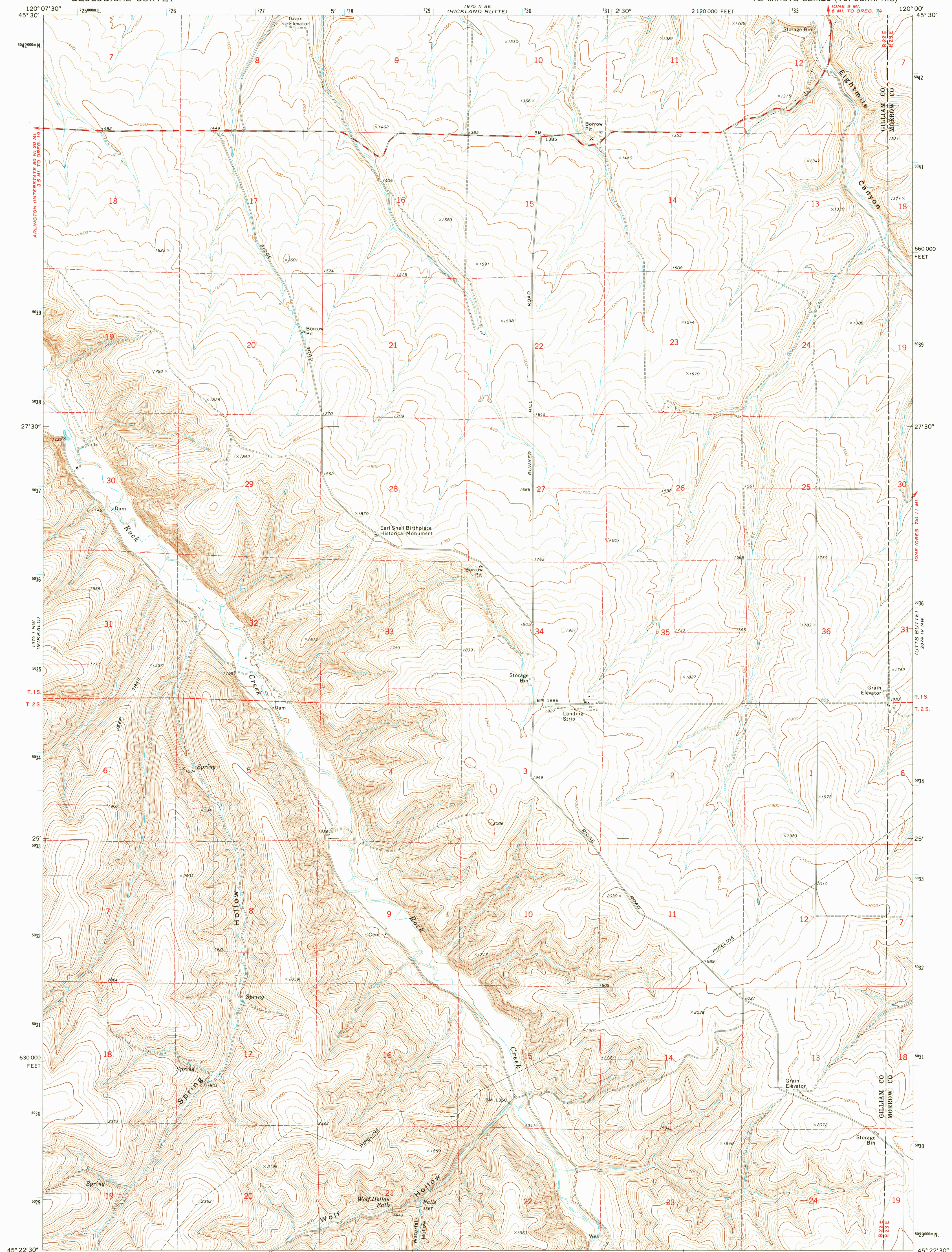
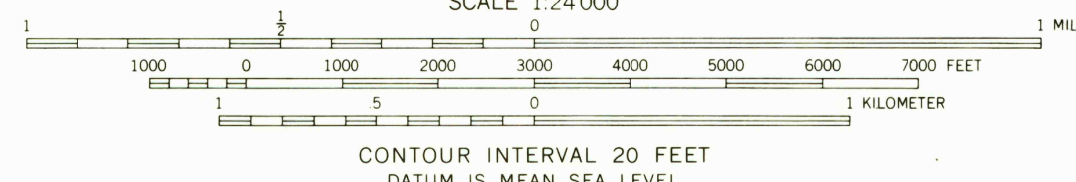
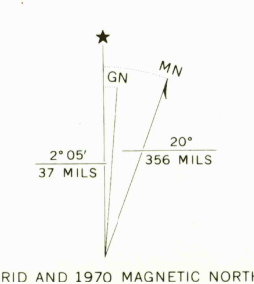


UNITED STATES
DEPARTMENT OF THE INTERIOR
GEOLOGICAL SURVEY

WOLF HOLLOW FALLS QUADRANGLE
OREGON
7.5 MINUTE SERIES (TOPOGRAPHIC)



Mapped, edited, and published by the Geological Survey
Control by USGS and USC&GS
Topography by photogrammetric methods from aerial photographs taken 1969. Field checked 1970
Projection and 10,000-foot grid ticks: Oregon coordinate system, north zone (Lambert conformal conic)
1000-meter Universal Transverse Mercator grid ticks, zone 10, shown in blue. 1927 North American datum
Fine red dashed lines indicate selected fence lines



ROAD CLASSIFICATION

| | |
|---------------------------------|---|
| Primary highway, hard surface | Light duty road, hard or improved surface |
| Secondary highway, hard surface | Unimproved road |
| Interstate Route | U.S. Route |
| | State Route |

CONTOUR INTERVAL 20 FEET
DATUM IS MEAN SEA LEVEL

WOLF HOLLOW FALLS, OREG.
N4522.5 - W12000/7.5

1970

AMS 1974 I NE-SERIES V892

1975 11 SE (SHUTTLE 1947)

1975 11 SW (CECU)

1975 10 SW (MUKKALO)

1975 10 NW (UTS BUTTE)

13 AUG 1973
Hean
2500
50 plan